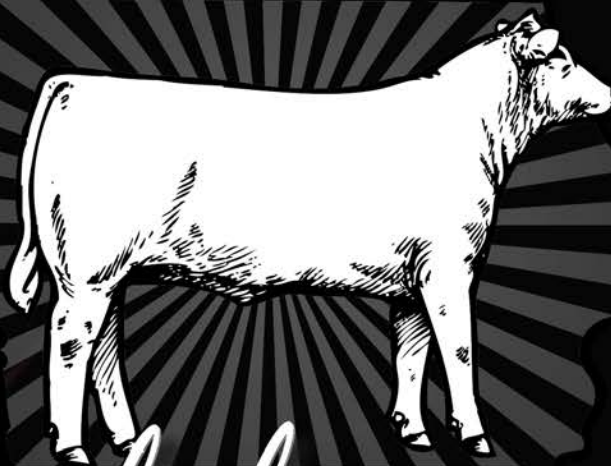


★ ★ ★ ★ ★
IOWA CATTLEMEN'S
ASSOCIATION



Symbol of
EXCELLENCE
PERFORMANCE BULL SALE

APRIL 14, 2023
TAMA LIVESTOCK AUCTION
6:30 P.M.

Welcome

For thirty-eight years, the Iowa Cattlemen's Association has provided third-party verified performance bulls through our 'Symbol of Excellence' Performance Bull Sales. Annually, we invite seedstock producers from across Iowa and beyond, to test their best genetics against one another. In the end, bulls that make the consignment sales at Bloomfield and Tama must express their potential to sire calves that will tip the scales at weaning and excel on the rail.

This group of 44 Spring yearling sale bulls started as a group nearly double in size. At ICA, we take pride in offering the best cattle to producers in our great state and others across the country. We hope that you can take comfort in knowing that we have started the selection process for you, as we offer Excellence in this year's consignment sale. In addition to being registered with a breed association, ICA 'Symbol of Excellence' bulls must surpass the muster of the following qualifications during and after the commercial grow yard testing period.

- **Minimum 1,100-pound adjusted yearling weight.**
- **Minimum 11.5-square inch ultrasound yearling ribeye area measurement.**
- **Must pass a breeding soundness exam with a minimum 32-centimeter scrotal circumference measurement.**
- **Must rank in the upper 90% for average daily gain amongst their contemporary group.**

Yes, comparative analysis is tangible and easy to point out in development facilities. However, we strive to balance performance data during the testing windows with even more important economic factors of bull potency and longevity. After all, purchasing bulls is an investment, and at the end of the day, if that investment is not expressed through a higher performing calf-crop, then how good of an investment have you made? The group of yearling bulls that are being offered today had a combined average daily gain of 3.9 pounds per day on test. More importantly, these bulls are ready for the roughest of terrains for the spring/summer breeding seasons—both structurally and reproductively.

Looking for proof that these bulls are the real deal? Take a look at their pedigrees—the writing is on the wall. In this group, over half rank in the upper 30% in their breed for WW and YW EPDs with a number of these bulls ranking similarly within their breed for CED and BW EPDs. Also, we are pleased to offer you trait leaders in each respective breed within this offering of yearling bulls.

Each individual has been put through one of the most meticulous performance testing programs in the country. These bulls have been selected to participate in this sale on structure and reproductive soundness, and have had to excel in all performance categories. Your purchase is backed by as much proof that is available to ensure that your next calf crop will rattle the scales at weaning and/or perform in the feedyard and on the rail for increased profitability.

Thank you for your continued support, trust, and belief in the consignor group and your Iowa Cattlemen's Association!

Sincerely,
Skylar Brittain
Iowa Cattlemen's Association



Sale Information

Sale Location:

Tama Livestock Auction
1908 E 5th St. Tama, IA 52339
Phone: (641) 484-3465

Sale Representatives:

Iowa Cattlemen's Association, Skylar Brittain..... (515) 250-0747
Iowa Cattlemen's Association, Matt Deppe.....(515) 468-7785
Iowa Cattlemen's Association, Tanner Lawton (515) 777-5815
Livestock Plus, Inc., Mike Sorensen (641) 745-7949
Tama Livestock Auction, Jason Lekin (641) 751-4227
LiveAuctions.TV, Mariah Miller.....(712) 294-4731
American Angus Association, Adam Conover.....(816) 676-8560

Auctioneers:

Jason Lekin.....(641) 751-4227

Sale Day Information:

Bids may be accepted by sale representatives.
Sale Day Phone - (515) 250-0747 or (515) 777-5815
A final sale order and supplement sheet will be available on sale day.

Sale Terms:

All cattle sold at the Tama 'Symbol of Excellence' sale will sell under the terms of their respective breed associations.

Testing Facility Information:

Please make arrangements with the following individuals to view cattle prior to delivery to Tama Livestock Auction.

Werner Feed Efficiency, Joe Werner.....(641) 344-4926

Sale Information Website:

Utilize the following link to view the online Catalog and videos
<https://bit.ly/40bRabB>

Selling Bulls:

33 Angus Spring Yearlings
2 Charolais Spring Yearlings
5 SimAngus Spring Yearlings
6 Simmental Spring Yearlings

Sale Videos:

Visit this link to view sale consignment videos: <https://bit.ly/40vtG16>

Livestock Insurance:

Available through our ICA Policy following your purchase of sale consignments. Liberty Mutual, Jeanne Conover (515) 491-1335

Internet Bidding:

Link: <https://bit.ly/3TIknST>

EPD Profiles:

Catalog EPD profiles were generated on March 1, 2023.

Purchase Delivery:

Iowa Cattlemen's Association will assist in providing reliable and affordable trucking following purchases of cattle.

Tama Livestock Auction Cafe will be open.

Symbol of Excellence Sale Order

TAG	BREED	PRICE	DESCRIPTION
36	Angus		High Indexing Overall and Angus
44	SM-AN		High Indexing SM-AN
66	Simmental		High Indexing Simmental
18	Charolais		High Indexing Charolais
57	Angus		
34	Angus		
30	Angus		
70	Angus		
60	Angus		
24	Angus		
50	Angus		
43	Simmental		
6	SM-AN		
54	Angus		
67	Simmental		
65	Simmental		
68	Angus		
51	Angus		
33	Angus		
9	Angus		
69	Angus		
37	Angus		
3	Angus		
29	Angus		
38	Angus		
63	SM-AN		
17	Charolais		
62	SM-AN		
23	Angus		
49	Angus		
39	Angus		
41	Simmental		
58	Angus		
45	Simmental		
2	Angus		
14	Angus		
53	Angus		
56	Angus		
40	Angus		
35	Angus		
20	Angus		
26	Angus		
7	SM-AN		
52	Angus		

Consignors

BAC RANCH

Brian & Amber Collett
21510 Bluegrass Rd.
Ottumwa, IA 52501
(641) 799-4670
(641) 799-1995
bacranch@gmail.com

BOGESS FAMILY ANGUS

John Boggess
2570 Snyder Ave.
Oskaloosa, IA 52577
(641) 295-2126
jonbog777@gmail.com

CARMAR FARMS

Steve Johnston
Box 500
Nevada, IA 50201
(641) 895-9704
stevej@hertz.ag

DLH ANGUS

D. Lynn Henry
15009 140th Ave.
Indianola, IA 50125
(515) 974-7156
lynn@dlhgrafx.com

DLR FARM ANGUS

Dan & Leslie Rinner
1751 Hoover St.
Osceola, IA 50213
(641) 344-6118
dryellowdog@yahoo.com

GOLDEN CHUTE RANCH

Butch & Patsy Neumeyer
600 Dows St., PO Box 38
Walker, IA 52352
(563) 920-4320
pneumeyer@iowatelecom.net

INDIAN HILLS COMMUNITY COLLEGE

Brydon Kaster
721 N First St.
Centerville, IA 52544
(641) 895-4461
brydon.kaster@indianhills.edu

LAWTON ACRES SIMMENTAL

Tom Lawton
1063 260th St.
Jefferson, IA 50129
(515) 370-2778
tclawt@netins.net

MARCHANT CATTLE

Matt Marchant
6943 Clay St.
Newton, IA 50208
(641) 275-0384
cattleco_566@live.com

MINERAL CREEK CATTLE CO.

Jerard Gnade
949 92nd St.
Monmouth, IA 52309
(563) 599-9111
cirjs@netins.net

NAHKUNST FAMILY CATTLE

Bradley & Jim Nahkunst
2552 Bluff Rd.
Hamburg, IA 51640
(712) 270-4615
nahkunstfarm@gmail.com

OTTO CATTLE COMPANY

Jason Otto
6744 225th St.
Ocheyedan, IA 51354
(712) 461-0739
jason.sara.otto@gmail.com

RAASCH PERFORMANCE CATTLE

Dean Raasch
606 N Main St.
Bridgewater, IA 50837
(712) 779-0595
Bukks4u@windstream.net

R & C ANGUS

Ruhl & Cheryl Barker
18269 Military Rd., PO Box 110
Monticello, IA 52310
(319) 480-1079
rcbarker12@gmail.com

SCHAEFER ANGUS

Craig Schaefer
7524 Independence Ave.
Waterloo, IA 50703
(319) 215-2708
schaeferangus@gmail.com

SPENCER'S GROVE FARMS

Larry Bridgewater
4717 Spencer's Grove Rd.
Walker, IA 52352
(319) 560-9378
lbridg1457@windstream.net

SUMMIT FARMS

Roy Miller
10640 Co Hwy D20
Alden, IA 50006
(641) 373-6031
rmiller@summitag.com

SWANSON ANGUS FARM

Glen Swanson
800 6th Ave.
Durant, IA 52747
(563) 940-6429
rcbarker12@gmail.com

TWIN CREEK ANGUS

Mark, Ruth, April & Rachel Kuhn
1799 293rd Ave.
Fort Atkinson, IA 52114
(563) 419-6441
abstca@acegroup.cc

WALTER FAMILY STOCK FARM

Jeremy Walter
2571 410th Ave.
Farragut, IA 51639
(712) 246-8957
jlwalter_3@hotmail.com

WOLFE SIMMENTALS

Bill Wolfe
13908 50th Ave.
Prole, IA 50229
(515) 681-5699
bjwolfe@myomnitel.com

Phenotypic Feed Efficiency

Understanding Data Outputs

Production efficiency is one goal in the selection and development of livestock; however, there are two underlying philosophies from which one may define “efficient” and direct future outcomes.

The first is *maintenance* efficiency. This is of primary importance in those cow herds where an efficient cow is considered one that can subsist on low inputs and yet provide a respectable calf each year. The second is *production* efficiency which generally is applied to feedlot cattle where the goal is minimal pounds of feed and maximum edible pounds of output. These two efficiencies may not be the same because low maintenance cows might tend to be easy fleshing and earlier maturing while the feedlot efficient counterparts may be larger, leaner and faster growing.

Feed efficiency is defined in many ways including the newer terms of RFI (residual feed intake) and R-ADG (residual average daily gain.) A discussion of these methods follows descriptions of the simpler efficiency evaluations.

Ranking on Phenotypic Residual Average Daily Gain													
Fed 5/18/2010 through 7/27/2010 70 days													
12 Rib													
RADG Rank	Ear Tag	Start Wt.	End Wt.	ADG	R-ADG ⁴	Fat Cover	DMI	Adj. DMI ⁵	RFI ³	RFI Rank	Raw F:G ¹	Adj. F:G ²	
1	HA403	800	969	2.42	0.86	0.41	19.1	-1.7	-1.79	2.00	7.91	8.39	
2	HA08	942	1136	2.76	0.23	0.50	20.9	0.4	-1.07	3.00	7.57	7.34	
3	HAJ73	984	1187	2.89	0.16	0.62	24.8	0.3	2.46	8.00	8.56	8.10	
4	HA15	920	1118	2.83	0.00	0.41	23.3	0.7	1.41	6.00	8.23	8.07	
5	HA6432	816	923	1.53	-0.03	0.44	21.9	1.1	1.65	7.00	14.37	15.36	
6	HA35	982	1161	2.55	-0.13	0.51	19.8	0.8	-2.20	1.00	7.77	7.40	
7	HA85	1058	1181	1.75	-0.46	0.80	21.4	-0.8	-0.39	4.00	12.22	11.33	
8	HA04	746	807	0.86	-0.63	0.19	19.2	-0.9	-0.07	5.00	22.43	25.51	

Feed Conversion¹ (F:G) = pounds of feed (on a 100% dry matter basis) required for one pound of live weight gain
(*Feed Dry Matter / Weight Gain.*)

Generally this measure is used in commercial feedyards to indicate efficiency. This value makes no adjustment for diet energy content or age/weight differences in measured animals. It's simply raw pounds of feed required per raw pounds of weight retained. Because of this, it is proper to use this type of measure only with cattle of similar age on the same ration. A lower value is desired.

Feed Efficiency (G:F) = pounds of live weight gain observed per unit of feed dry matter consumed. This is the reciprocal of “Feed Conversion” and has the same issues. These terms often are used interchangeably and allow users to arrive at the same conclusion. A higher value is desired.

Adjusted Feed Conversion² This value is the base Feed:Gain value multiplied by the contemporary group's metabolic weight divided by the individual's metabolic weight. The formula is as follows:

$$(\text{Group Avg Wt.}^{.75} / \text{Individual Wt.}^{.75}) \times \text{Individual's Feed to Gain.}$$

Note that this adjustment attempts to remove the age or size differences of the animal when put on test. This currently is the standard of feed conversion efficiency used by the Beef Improvement Federation. A lower value is desired.

RFI³ (Residual Feed Intake): This is defined as the difference between actual feed intake and that predicted on the basis of the animal's gain and maintenance requirements for its body weight. The calculation is more complex because mathematical statistics are used to determine the RFI value. A prediction equation is developed by using regression of the actual feed intakes, gains and average weights on test of the animal's contemporaries. The calculation factors in both maintenance efficiency (the easy keeper concept) and production efficiency (pounds in vs. pounds out like the normal Feed:Gain equation).

An average animal would have an RFI of “0”. Animals with a negative RFI value are favored because they have consumed less feed for their weight and gain than

the average of their herd mates. Animals with a positive RFI number would be consuming more feed for their weight and gain than the average of their herd mates.



Measurement of individual intake

For the RFI calculation to be relevant in the evaluation of potential breeding stock, it's of utmost importance that it be calculated in the context of the weaning contemporary group and used in index selection (multi-trait selection.)

This is important because the pre-weaning environment, pasture management, creep feed availability and age of dam (milking ability as seen between first calf heifers and older cows) has been shown to have a marked effect on the feed conversion outcomes in Iowa State

University trials. This issue is not seen in the same light by all because it appears that many centralized test stations tend to create a "feeding contemporary group" and evaluate cattle in that context. For this reason test stations try to equalize pre-test environments by having a 3-to-5 week warm-up period.

R-ADG⁴ (Residual Average Daily Gain): This is defined as the difference between actual weight gain and the gain predicted on the basis of dry matter intake, maintenance of body weight and fat cover. Like RFI, a regression equation is developed using the actual gains, feed intakes, average weights on test and fat cover of an animal's herd mates. This unique equation is then used to calculate the individual R-ADG.

An average animal has an R-ADG of "0." Animals with a positive R-ADG value are favored because they have higher daily gains for the amount of feed consumed and their body composition (% fat.) Animals with a negative R-ADG value are unfavorable because they have lower daily gains for the amount of feed consumed and their body composition. Again like RFI, relevance of this evaluation depends on a comparison of animals from the same weaning contemporary group or put through a substantial warm-up period prior to their feed intake and gain test.

Adj. DMI⁵ (Adjusted Dry Matter Intake): This is defined as the feed dry matter intake adjusted by multiplying the contemporary group's average mid-point metabolic weight, and then dividing by the individual's mid-point metabolic weight. The final value is the difference by subtracting out the contemporary group average. A lower value is desired.

Comparison of feed efficiency terms

Method	More Desirable	Less Desirable	Difference
Raw F:G – Raw Feed Conversion: usually on dry matter basis (lbs feed/lb of gain)	Lower values Example: 4.5 lbs	Higher values Example 7.5 lbs	Example: 3.0 lbs of feed
Adj. F:G – Adjusted Feed Conversion: usually on dry matter basis (lbs feed/lb of gain)	Lower values Example: 4.5 lbs	Higher values Example: 6.5 lbs	Example: 2 lbs of dry matter
RFI – Residual Feed Intake: usually on dry matter basis	Negative values Example: -1.7	Positive values Example: +1.5	Example: 3.2 lbs of feed
R-ADG – Residual Average Daily Gain: usually on lbs gained per day	Positive values Example: +0.86	Negative values Example: -.63	Example: 1.49 lbs of average daily gain
Adj. DMI – Adjusted Dry Matter Intake: should be on dry matter basis	Negative values Example: -0.9	Positive values Example: +0.8	Example: 1.7 lbs of feed

File: Animal Science 11

Prepared by Garland Dahlke, Daryl Strohbehn and Sherry Hoyer, Iowa Beef Center, Iowa State University.

IOWA STATE UNIVERSITY
University Extension

... and justice for all

The U.S. Department of Agriculture (USDA) prohibits discrimination in all its programs and activities on the basis of race, color, national origin, gender, religion, age, disability, political beliefs, sexual orientation, and marital or family status. (Not all prohibited bases apply to all programs.) Many materials can be made available in alternative formats for ADA clients. To file a complaint of discrimination, write USDA, Office of Civil Rights, Room 326-W, Whitten Building, 14th and Independence Avenue, SW, Washington, DC 20250-9410 or call 202-720-5964. Issued in furtherance of Cooperative Extension work, Acts of May 8 and June 30, 1914, in cooperation with the U.S. Department of Agriculture. Gerald A. Miller, interim director, Cooperative Extension Service, Iowa State University of Science and Technology, Ames, Iowa.

Yearling Angus Bulls

2

DEPPE R&C RESILIENT 217

Birth Date: 3/17/22 Bull 20288299 Tattoo: 217

R & C Angus • Ruhl & Cheryl Barker

Sire SITZ STELLAR 726D
SITZ RESILLIENT 10208

ANGUS GC

Dam DAMERON FIRST CLASS
DEPPE R&C BARDOT 584
SELDOM REST BA BARDOT 427

CED	BW	WW	YW	CEM	MM	MWT	BF	REA		
14	0	71	118	11	20	45	0.024	0.6		
\$F	\$G	\$B	\$C	\$M	\$EN	\$W	RIB ADJ	CWT	MARB	
65	29	94	200	80	-8	68	.44	34	0.17	

ACT BW	205 ADJ
76	676
Off Test WT	205 RATIO
1233	100
ADG	ADG RATIO
3.93	96
WDA	WDA RATIO
3.45	103
REA ADJ	FAT ADJ
13.2	.47
IMF ADJ	ADJ YW
3.58	1259
PELVIC AREA	SCROTAL
134.0	34
PELVIC HEIGHT	PELVIC WIDTH
11	12



LOT 2

Dam's Production: BW 4@94, WW 4@102, Calving interval 374 Days
RECOMMENDED FOR HEIFERS OR COWS

A double digit CED of +14 and a +0 BW EPD ensures that Deppe R&C Resilient 217 is an excellent sure-fire calving ease bull which also will add pounds to his calves with +71 WW and +119 YW. Here is a stout one with a big top and lots of power from behind. You will appreciate this one for his added pattern and style. Backed by the great Bardot cow family, his dam is owned in partnership with Deppe Angus and has produced replacement cows for our herds. A Resilient son was Deppe's high seller this year for \$46,000.

3

R&C LB MONEY EARNED 2775

Birth Date: 4/4/22 Bull 20497637 Tattoo: 2775

R & C Angus • Ruhl & Cheryl Barker

Sire DAMERON FIRST CLASS
GCC MONEY EARNED 852E ET
DUFF W 373 DIXIEERICA 8137

ANGUS GC

Dam S A V ANGUS VALLEY 1867
R&C GEORGINA 375A
BR GEORGINA T755

CED	BW	WW	YW	CEM	MM	MWT	BF	REA		
-8	5.7	79	131	4	25	94	-0.061	1		
\$F	\$G	\$B	\$C	\$M	\$EN	\$W	RIB ADJ	CWT	MARB	
91	44	135	237	61	-34	59	.21	54	0.23	

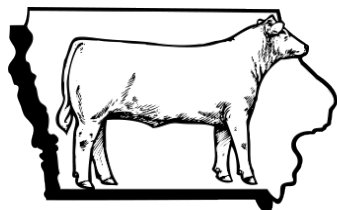
ACT BW	205 ADJ
84	708
Off Test WT	205 RATIO
1129	101
ADG	ADG RATIO
4.45	108
WDA	WDA RATIO
3.33	100
REA ADJ	FAT ADJ
12.7	.18
IMF ADJ	ADJ YW
3.09	1209
PELVIC AREA	SCROTAL
156.0	34.5
PELVIC HEIGHT	PELVIC WIDTH
11.5	13



GCC MONEY EARNED 852E ET
SIRE OF LOT 3

Dam's Production: BW 8@101, WW 8@105, %IMF 3@103, Ribeye 3@100, Calving Interval of 358 Days,
She is a PATHFINDER COW!

Powerhouse growth bull with high weaning and yearling EPDs. This guy has consistently gained above 5 lbs. ADG during the test weights. If you are selling your calves at weaning, he will add pounds to his calves. His 10-year-old dam raised our Reserve Champion Heifer at the 2017 Iowa Beef Expo and has gone on to sell bulls and replacement heifers to Bachmeier Angus, ND; Kruse Angus, DeWitt, IA; Fishwild Cattle, WY; and Nelson Angus, Stanton, IA. Proven genetics to add to your herd.



IOWA CATTLEMEN'S ASSOCIATION

YOUR FUTURE IS OUR MISSION.

Renew Today!

www.iacattlemen.org



LB NO DOUBT 211

Birth Date: 2/23/22 Bull 20443285 Tattoo: 211

Spencer's Grove Farms • Larry Bridgewater

Sure G C NO DOUBT 819



Dam G C BESSIE 626

HOOVER NO DOUBT

G C PRIZE LASS 824

G G TOTAL IMPACT 388

G C BESSIE 414

CED	BW	WW	YW	CEM	MM	MWT	BF	REA		
-2	2.4	72	135	7	22	112	0.002	0.88		
\$F	\$G	\$B	\$C	\$M	\$EN	\$W	RIB ADJ	CWT	MARB	
103	38	140	219	37	-40	54	.24	59	0.23	

This bull is a grandson to Hoover No Doubt who came in with an ADG of 5.34 lbs. He has proven his traits with being 15% on YW. Also strong in WW and RADG. He has impressive maternal traits as well, being a 1% in MH and AMP; 10% MW. This No Doubt bull will produce standout daughters in production for your replacement heifers.

ACT BW	205 ADJ
75	700
Off Test WT	205 RATIO
1250	100
ADG	ADG RATIO
4.66	113
WDA	WDA RATIO
3.30	99
REA ADJ	FAT ADJ
14.3	.25
IMF ADJ	ADJ YW
2.75	1207
PELVIC AREA	SCROTAL
157.5	37
PELVIC HEIGHT	PELVIC WIDTH
11.5	14



CMF TEAMWORK N15

Birth Date: 3/16/22 Bull 20497906 Tattoo: N15

CarMar Farms • Steve Johnston

Sure E W A TEAMWORK 821



Dam CMF QUEEN G21

E W A PEYTON 642

E W A 543 OF 117 WEIGH UP

CONNELLY COUNSELOR

CMF QUEEN S15

CED	BW	WW	YW	CEM	MM	MWT	BF	REA		
7	1.4	78	136	8	25	NA	0.009	0.86		
\$F	\$G	\$B	\$C	\$M	\$EN	\$W	RIB ADJ	CWT	MARB	
112	57	168	283	65	-33	66	.37	55	0.66	

This Teamwork son is showing real promise and ranks in the Top 10% of the breed in WW and \$F and the Top 15% in \$B and \$C. His sire touts impressive numbers and are in the Top 1% of the breed in WW, YW, RADG, \$, CW, \$F, \$B and \$C. There is no doubt this Teamwork son will deliver power and performance to your cow herd with a blend of carcass merit and rapid growth.

ACT BW	205 ADJ
92	590
Off Test WT	205 RATIO
1190	100
ADG	ADG RATIO
4.44	108
WDA	WDA RATIO
3.32	99
REA ADJ	FAT ADJ
12.8	.36
IMF ADJ	ADJ YW
2.65	1211
PELVIC AREA	SCROTAL
163.8	37
PELVIC HEIGHT	PELVIC WIDTH
12	13.5



BAC CADILLAC ERICA K084

Birth Date: 2/17/22 Bull 20460988 Tattoo: K084

BAC Ranch • Brian Collett

Sure CONNEALY CADILLAC



Dam FERGS PLEASANT ERICA 0840

TEHAMA TAHOE B767

JESSIE OF CONANGA 870E

DL AUTOMATIC 1088

FERGS TRAVELER 3840

CED	BW	WW	YW	CEM	MM	MWT	BF	REA		
10	-1.2	72	139	7	37	82	0.48	0.58		
\$F	\$G	\$B	\$C	\$M	\$EN	\$W	RIB ADJ	CWT	MARB	
101	64	165	264	49	-35	77	.46	64	0.96	

K084 has a DOB 2/17/2022 and BW of 66 lbs. This bull has a CED +10 and a BW -1.2, WW +72 and his YW is +139. He has seven EPDs in the Top 10%. He has eight EPDs in the Top 20% of the breed. He is a sleep all night calving ease sire with the growth and maternal traits to retain heifers.

ACT BW	205 ADJ
66	686
Off Test WT	205 RATIO
1294	100
ADG	ADG RATIO
3.87	94
WDA	WDA RATIO
3.36	100
REA ADJ	FAT ADJ
13.5	.47
IMF ADJ	ADJ YW
3.55	1290
PELVIC AREA	SCROTAL
150.3	34
PELVIC HEIGHT	PELVIC WIDTH
11.5	13.5



E W A TEAMWORK 821
SIRE OF LOTS 23 & 24



DLH KILROY 1807 092

Birth Date: 3/26/22 Bull 20408677 Tattoo: 2209

DLH Angus • D. Lynn Henry

Sure CONNEALY KILROY



Dam DLH POWER LASS DM 160 1807

BASIN PAYWEIGHT 1682

ELBANNA OF CONANGA 1209

G A R 5050 DATA MANAGER 0536

DLH POWER LASS 124 160

CED	BW	WW	YW	CEM	MM	MWT	BF	REA		
-6	5.1	77	125	0	28	51	-0.015	0.73		
\$F	\$G	\$B	\$C	\$M	\$EN	\$W	RIB ADJ	CWT	MARB	
83	57	140	251	68	-15	68	.24	48	0.66	

Here is an attractive, late March Kilroy son. Kilroy was one of the high selling bulls at Connealy's. His calves were small and vigorous at birth. His mother had one of the top numbered bulls in last year's Tama sale. She has a calving interval of 370 days, 105/3 Birth, 103/3 Weaning, 108/1 Yearling, 103/1 IMF, 102/1 RE. Add him to your herd and you can say "Kilroy was here."

ACT BW	205 ADJ
85	649
Off Test WT	205 RATIO
1091	96
ADG	ADG RATIO
3.77	92
WDA	WDA RATIO
3.14	94
REA ADJ	FAT ADJ
14.9	.22
IMF ADJ	ADJ YW
3.44	1160
PELVIC AREA	SCROTAL
152.8	35.5
PELVIC HEIGHT	PELVIC WIDTH
11	13.5



CMF TEAMWORK N49

Birth Date: 3/31/22 Bull 20497843 Tattoo: N49

CarMar Farms • Steve Johnston

Sure E W A TEAMWORK 821



Dam CMF BLACKBIRD EISA J18

E W A PEYTON 642

E W A 543 OF 117 WEIGH UP

BRUNS TOP CUT 373

CMF BLACKBIRD EISA D16

CED	BW	WW	YW	CEM	MM	MWT	BF	REA		
13	-0.3	78	140	13	30	NA	0.003	0.93		
\$F	\$G	\$B	\$C	\$M	\$EN	\$W	RIB ADJ	CWT	MARB	
124	59	184	309	70	-34	71	.50	68	0.68	

This Teamwork son is coming on strong with production rankings in the Top 10% of the breed for CED, WW and YW. In test the Teamwork bull excelled with an ADG among the top one third and ranks in the Top 5% of the breed for \$F and \$C. With the genetics and numbers to prove it, this bull has all the makings of becoming a great herd bull.

ACT BW	205 ADJ
77	568
Off Test WT	205 RATIO
1183	100
ADG	ADG RATIO
4.83	118
WDA	WDA RATIO
3.45	103
REA ADJ	FAT ADJ
14.2	.47
IMF ADJ	ADJ YW
4.56	1274
PELVIC AREA	SCROTAL
160.8	34
PELVIC HEIGHT	PELVIC WIDTH
11.5	13.5

26

CMF INERTIA N19

Birth Date: 3/17/22 Bull 20499908 Tattoo: N19

CarMar Farms • Randy Hertz

Sire **G A R INERTIA**

G A R MOMENTUM

G A R PROPHET 2984

ANGUS GS

Dam **CMF BLACKCUP G80**

CMF QUIET LAD Z04

CMF BLACKCUP B53

CED	BW	WW	YW	CEM	MM	MWT	BF	REA	
12	1.2	62	119	13	34	90	0.055	0.58	
\$F	\$G	\$B	\$C	\$M	\$EN	\$W	RIB ADJ	CWT	MARB
103	58	161	249	40	-36	62	.36	56	0.84

A powerful Inertia son with a combination of breed leading genotype and body mass. His sire offers one of the most imposing data and phenotype combinations to ever come out of the illustrious Gardiner Angus program. This Inertia son has production rankings in the Top 10% of the breed in CED, BW, YH and Maternal CEM, Milk and MH. With the perfect combination of calving ease and power, this bull has what it takes to become a step change in your herd.

ACT BW	205 ADJ
74	555
Off Test WT	205 RATIO
1104	100
ADG	ADG RATIO
3.91	95
WDA	WDA RATIO
3.09	92
REA ADJ	FAT ADJ
12.6	.35
IMF ADJ	ADJ YW
5.14	1127
PELVIC AREA	SCROTAL
170.0	35
PELVIC HEIGHT	PELVIC WIDTH
12	14



G A R INERTIA
SIRE OF LOT 26

29

T C A MAGNUM AI 252

Birth Date: 3/20/22 Bull 20434161 Tattoo: 252

Twin Creek Angus • April Kuhn

Sire **AF MAGNUM AI 8084**

MEAD MAGNITUDE

AF MISS ANNIE 4051

ANGUS GS

Dam **EMERALD LN BLACKCAP E449**

K C F BENNETT FORTRESS

ELA BLACKCAP C132

CED	BW	WW	YW	CEM	MM	MWT	BF	REA	
6	2	89	151	11	25	80	-0.054	0.94	
\$F	\$G	\$B	\$C	\$M	\$EN	\$W	RIB ADJ	CWT	MARB
101	79	180	306	75	-27	83	.32	67	0.99

A modern outcross pedigree. Use this bull for growth and hanging a great carcass. Save the females from him also.

ACT BW	205 ADJ
80	678
Off Test WT	205 RATIO
1160	106
ADG	ADG RATIO
4.09	100
WDA	WDA RATIO
3.28	98
REA ADJ	FAT ADJ
13	.31
IMF ADJ	ADJ YW
3.99	1194
PELVIC AREA	SCROTAL
151.3	36
PELVIC HEIGHT	PELVIC WIDTH
11	13.5

33

T C A ASCEND 259

Birth Date: 3/28/22 Bull 20433892 Tattoo: 259

Twin Creek Angus • Mark & Ruth Kuhn

Sire **E W A ASCEND 7306**

G A R MOMENTUM

E W A 3128 OF 9067 WEIGH UP

ANGUS GS

Dam **T C A JOURNEY FORMERA 702**

WR JOURNEY-1X74

T C A DAYBREAK FORMERA 102

CED	BW	WW	YW	CEM	MM	MWT	BF	REA	
8	3	80	136	6	28	90	-0.047	1.09	
\$F	\$G	\$B	\$C	\$M	\$EN	\$W	RIB ADJ	CWT	MARB
107	78	184	285	45	-33	72	.20	69	0.94

A bull that will work great for retaining animals through the feedlot. Plenty of growth and carcass. Dam is a very productive, nice uddered cow. She has achieved pathfinder status.

ACT BW	205 ADJ
82	724
Off Test WT	205 RATIO
1210	113
ADG	ADG RATIO
3.83	93
WDA	WDA RATIO
3.50	105
REA ADJ	FAT ADJ
15.5	.18
IMF ADJ	ADJ YW
3.89	1272
PELVIC AREA	SCROTAL
160.0	37
PELVIC HEIGHT	PELVIC WIDTH
11.5	13.5

30

T C A REVELATION 254

Birth Date: 3/24/22 Bull 20433890 Tattoo: 254

Twin Creek Angus • April Kuhn

Sire **V A R REVELATION 6299**

QUAKER HILL RAMPAGE 0A36

SANDPOINT BLACKBIRD 8809

ANGUS GS

Dam **T C A FOREMAN BLACKCAP 804**

V A R FOREMAN 3339

T C A ACCRUEL BLACKCAP 605

CED	BW	WW	YW	CEM	MM	MWT	BF	REA	
5	2.6	93	159	8	29	137	-0.012	1.26	
\$F	\$G	\$B	\$C	\$M	\$EN	\$W	RIB ADJ	CWT	MARB
120	71	191	295	49	-56	84	.36	75	0.8

Top 1% WW and Top 2% YW. Performance. Will also hang a great carcass. Top 4% carcass weight and Top 1% ribeye area.

ACT BW	205 ADJ
81	711
Off Test WT	205 RATIO
1234	111
ADG	ADG RATIO
4.52	110
WDA	WDA RATIO
3.53	105
REA ADJ	FAT ADJ
15.8	.34
IMF ADJ	ADJ YW
4.30	1303
PELVIC AREA	SCROTAL
178.8	37
PELVIC HEIGHT	PELVIC WIDTH
12.5	14

34

T C A ASCEND 257

Birth Date: 3/26/22 Bull 20433894 Tattoo: 257

Twin Creek Angus • Mark & Ruth Kuhn

Sire **E W A ASCEND 7306**

G A R MOMENTUM

E W A 3128 OF 9067 WEIGH UP

ANGUS GS

Dam **T C A RAMPAGE FORMERA 805**

QUAKER HILL RAMPAGE 0A36

T C A MARQUIS FORMERA 607

CED	BW	WW	YW	CEM	MM	MWT	BF	REA	
9	2.3	102	169	12	15	160	-0.024	1.08	
\$F	\$G	\$B	\$C	\$M	\$EN	\$W	RIB ADJ	CWT	MARB
95	84	179	265	34	-59	75	.37	65	1.11

This bull could be used on larger framed heifers. What a scale crusher! Top 1% WW and YW. He does not stop there. All carcass traits in the Top 15% or better.

ACT BW	205 ADJ
83	724
Off Test WT	205 RATIO
1254	113
ADG	ADG RATIO
4.35	106
WDA	WDA RATIO
3.60	108
REA ADJ	FAT ADJ
14.6	.35
IMF ADJ	ADJ YW
4.92	1331
PELVIC AREA	SCROTAL
179.8	37
PELVIC HEIGHT	PELVIC WIDTH
13	13.5

35

T C A MAGNUM AI 258

Birth Date: 3/27/22 Bull 20434158 Tattoo: 258

Twin Creek Angus • Mark & Ruth Kuhn

Sire AF MAGNUM AI 8084
MEAD MAGNITUDE
AF MISS ANNIE 4051



Dam T C A LEAD ROLE BLACKCAP 908
44 LEADING ROLL 6273
T C A ACCRUEL BLACKCAP 605

CED	BW	WW	YW	CEM	MM	MWT	BF	REA		
13	0.6	71	127	12	34	72	0.043	0.88		
\$F	\$G	\$B	\$C	\$M	\$EN	\$W	RIB ADJ	CWT	MARB	
104	63	167	281	62	-28	75	.28	61	0.84	

Safe for use on heifers. Growth also in Top 20% along with good carcass, disposition and maternal. An all around use bull.

ACT BW	205 ADJ		
79	685		
Off Test WT	205 RATIO	1088	107
ADG	ADG RATIO	3.68	90
WDA	WDA RATIO	3.14	94
REA ADJ	FAT ADJ	14.4	.26
IMF ADJ	ADJ YW	4.87	1180
PELVIC AREA	SCROTAL	160.5	36
PELVIC HEIGHT	PELVIC WIDTH	12	13

37

T C A REVELATION 265

Birth Date: 3/8/22 Bull 20458986 Tattoo: 265

Twin Creek Angus • Rachel Kuhn

Sire V A R REVELATION 6299
QUAKER HILL RAMPAGE 0A36
SANDPOINT BLACKBIRD 8809



Dam T C A ACCRUEL TREASURE 511
T C A ACCRUEL 260
TCA TOTAL IMP TREASURE 309

CED	BW	WW	YW	CEM	MM	MWT	BF	REA		
6	2	76	136	9	26	135	-0.043	1.22		
\$F	\$G	\$B	\$C	\$M	\$EN	\$W	RIB ADJ	CWT	MARB	
112	85	197	291	36	-53	62	.24	64	1.06	

Growth and carcass traits all in the Top 15% or better in the entire Angus breed. A real performance bull. Born as an ET. We do very little flushing but the dam of this bull is the granddam of Eastwood and this cow family has put many bulls into AI studs. #1 Feed Efficiency Bull!

ACT BW	205 ADJ		
80	664		
Off Test WT	205 RATIO	1154	ET
ADG	ADG RATIO	4.56	111
WDA	WDA RATIO	3.15	94
REA ADJ	FAT ADJ	14.1	.24
IMF ADJ	ADJ YW	4.26	1151
PELVIC AREA	SCROTAL	155.0	33.5
PELVIC HEIGHT	PELVIC WIDTH	11.5	13.5

36

T C A MAGNUM AI 256

Birth Date: 3/26/22 Bull 20434160 Tattoo: 256

Twin Creek Angus • Mark & Ruth Kuhn

Sire AF MAGNUM AI 8084
MEAD MAGNITUDE
AF MISS ANNIE 4051



Dam T C A ACCRUEL BLACKCLASS 807
T C A ACCRUEL 260
T C A IMPACT BLACKCLASS 204

CED	BW	WW	YW	CEM	MM	MWT	BF	REA		
10	0.6	91	147	8	31	87	0.03	0.65		
\$F	\$G	\$B	\$C	\$M	\$EN	\$W	RIB ADJ	CWT	MARB	
89	92	181	315	80	-34	94	.40	62	1.51	

This is a really cool bull. If you sell 1/4, 1/2 or whole locker beef this bull needs your attention. Genomics 10 on carcass weight 1 for marbling and 11 for tenderness. Your customers will enjoy it. Beyond that this bull excels in many traits along with maternal ability.

ACT BW	205 ADJ		
81	737		
Off Test WT	205 RATIO	1233	116
ADG	ADG RATIO	4.80	117
WDA	WDA RATIO	3.54	106
REA ADJ	FAT ADJ	14.3	.38
IMF ADJ	ADJ YW	7.91	1309
PELVIC AREA	SCROTAL	160.3	34.5
PELVIC HEIGHT	PELVIC WIDTH	12	13

38

T C A GALLILEO 261

Birth Date: 4/14/22 Bull 20433095 Tattoo: 261

Twin Creek Angus • Rachel Kuhn

Sire T C A GALLILEO
GB FIREBALL 672
T C A ACCOUNTANT LULU 111



Dam T C A ENHANCE BLACKCLASS 904
SYDGEN ENHANCE
T C A RAMPAGE BLACKCLASS 706

CED	BW	WW	YW	CEM	MM	MWT	BF	REA		
10	0.2	69	121	11	30	75	-1	1.11		
\$F	\$G	\$B	\$C	\$M	\$EN	\$W	RIB ADJ	CWT	MARB	
94	75	169	282	62	-27	70	.32	45	0.96	

Safe to use on heifers. A bull with great balance in all traits. Use for all facets of production with confidence. His sire was a high performing bull at the ICA test and had a lot of interest. He was injured prior to the sale, we kept him and he has made a full recovery and has sired us some super nice progeny.

ACT BW	205 ADJ		
76	677		
Off Test WT	205 RATIO	1108	106
ADG	ADG RATIO	4.27	104
WDA	WDA RATIO	3.37	101
REA ADJ	FAT ADJ	14.5	.28
IMF ADJ	ADJ YW	4.27	1261
PELVIC AREA	SCROTAL	177.8	37.5
PELVIC HEIGHT	PELVIC WIDTH	12.5	13.5

Call us for all your county & ICA apparel needs

MUIR

EMBROIDERY



124 N. Wilson St. • Jefferson, IA
Todd & Roxanne Muir • Ian & Bridget Johnson
Tyler, Natasha, Kenzie & Cody Muir

515-386-4196 • muirembroidery@netins.net

Custom Embroidery and Screen Printing

- Caps
- Jackets
- Pullovers
- Shirts
- Vests
- Custom Sunglasses
- Gloves
- Custom Sunglasses
- Director Chairs
- Awards
- Safety Wear
- Footwear & Overshoes
- Rain Wear
- Trophies
- Promotional Products
- & much more!

We have over 20,000 computer stock designs or call and ask for an estimate on custom design logos. We will help you with colors, size, etc. to make your embroidery have the look you want!

Representing these and other quality manufacturers:





T C A ASCEND 260

Birth Date: 3/30/22 Bull 20433891 Tattoo: 260

Twin Creek Angus • Rachel Kuhn

Sure E W A ASCEND 7306
G A R MOMENTUM
E W A 3128 OF 9067 WEIGH UP



Dam T C A CC&7 IDELETTE 107
SYDGEN C C & 7
T C A IN FOCUS IDELETTE 803

CED	BW	WW	YW	CEM	MM	MWT	BF	REA		
11	0.9	76	128	8	27	113	-0.033	0.69		
\$F	\$G	\$B	\$C	\$M	\$EN	\$W	RIB ADJ	CWT	MARB	
90	87	177	275	47	-43	70	.24	62	1.27	

Safe to use on heifers. Was our top weaning weight last year at 769 lbs. We do not creep feed. His dam is now 12-years-old and looks incredible. She has never missed and is a pathfinder.

ACT BW	205 ADJ
84	760
Off Test WT	205 RATIO
1173	119
ADG	ADG RATIO
3.91	95
WDA	WDA RATIO
3.41	102
REA ADJ	FAT ADJ
13	.21
IMF ADJ	ADJ YW
3.75	1258
PELVIC AREA	SCROTAL
166.3	37
PELVIC HEIGHT	PELVIC WIDTH
11.5	14



OTTO WEIGH UP 204

Birth Date: 4/4/22 Bull 20405507 Tattoo: 204

Otto Cattle Company • Jason Otto

Sure SCHIEFELBEIN UPWARD 1307
SITZ UPWARD 307R
FROSTY ELBA 1585



Dam BROOKDALE ANITA 904
G A R SCALE HOUSE
PARSLEYS ANITA 4101

CED	BW	WW	YW	CEM	MM	MWT	BF	REA		
7	2.8	87	151	-1	31	82	0.002	0.62		
\$F	\$G	\$B	\$C	\$M	\$EN	\$W	RIB ADJ	CWT	MARB	
92	54	146	256	66	-31	83	.37	62	0.65	

Dams production- BR 2@108. WR 2@111
Take a look at this bull to add pounds to your weaned calves! Top 3% WW and Top 4% YW EPDs! His sire was one of the top selling bulls of the 2018 Schiefelbein sale at \$20,000. His attractive, Maternal Plus enrolled dam has a +99 WW and a +173 YW EPD, both in the very elite Top 1% of the breed. Her pedigree combines the powerful bulls Plattemere Weigh Up and GAR Scale House.

ACT BW	205 ADJ
88	750
Off Test WT	205 RATIO
1189	116
ADG	ADG RATIO
4.25	104
WDA	WDA RATIO
3.51	105
REA ADJ	FAT ADJ
14.4	.34
IMF ADJ	ADJ YW
3.385	1313
PELVIC AREA	SCROTAL
161.8	37.5
PELVIC HEIGHT	PELVIC WIDTH
11.5	13.5



T C A GALLILEO 262

Birth Date: 4/15/22 Bull 20433091 Tattoo: 262

Twin Creek Angus • Rachel Kuhn

Sure T C A GALLILEO
GB FIREBALL 672
T C A ACCOUNTANT LULU 111



Dam T C A JOURNEY LULU 705
WR JOURNEY-1X74
T C A ACCUEL LULU 513

CED	BW	WW	YW	CEM	MM	MWT	BF	REA		
7	1.8	65	122	10	20	81	0.01	1.03		
\$F	\$G	\$B	\$C	\$M	\$EN	\$W	RIB ADJ	CWT	MARB	
113	76	189	296	50	-25	51	.35	55	1.02	

Safe to use on larger framed heifers. Another bull that is bred for all facets of beef production.

ACT BW	205 ADJ
82	625
Off Test WT	205 RATIO
1020	98
ADG	ADG RATIO
4.12	100
WDA	WDA RATIO
3.11	93
REA ADJ	FAT ADJ
14.4	.31
IMF ADJ	ADJ YW
3.72	1126
PELVIC AREA	SCROTAL
177.3	34
PELVIC HEIGHT	PELVIC WIDTH
12	14



OTTO COUNTY LINE 201

Birth Date: 2/25/22 Bull 20405509 Tattoo: 201

Otto Cattle Company • Jason Otto

Sure DVAR COUNTY LINE
DEER VALLEY GROWTH FUND
DVAR 2445 500



Dam E&B LADY PLUS 688
CONNEALY CONFIDENCE PLUS
E&B LADY1166 IMPRESSION 4113

CED	BW	WW	YW	CEM	MM	MWT	BF	REA		
13	-0.2	62	119	14	28	64	-0.008	1.01		
\$F	\$G	\$B	\$C	\$M	\$EN	\$W	RIB ADJ	CWT	MARB	
99	48	147	264	71	-21	62	.32	50	0.4	

Dams production- BR 5@100 WR 5@103
This bull is a rare find with his combination of high calving ease, natural thickness and huge ribeye! His sire was a highlight of the 2021 Huck sale and combines the popular Deer Valley Growth Fund with a long line of females that excel for carcass traits. His Maternal Plus enrolled dam is attractive and easy fleshing. She stems from the high performing Benoit herd of Kansas which has produced numerous AI stud sires in recent years. Her pedigree can be traced back to Everett's first cows he purchased in the early 1960's.

ACT BW	205 ADJ
80	714
Off Test WT	205 RATIO
1316	111
ADG	ADG RATIO
4.47	109
WDA	WDA RATIO
3.49	104
REA ADJ	FAT ADJ
16.4	.33
IMF ADJ	ADJ YW
3.45	1277
PELVIC AREA	SCROTAL
159.0	34.5
PELVIC HEIGHT	PELVIC WIDTH
12	13.5



L B NO DOUBT 201

Birth Date: 2/22/22 Bull 20443276 Tattoo: 201

Golden Chute Ranch • Butch & Patsy Neumeyer

Sure G C NO DOUBT 819
HOOVER NO DOUBT
G C PRIZE LASS 824



Dam G C ENCHANTRESS 878
G G TOTAL IMPACT 388
G C ENCHANTRESS 228

CED	BW	WW	YW	CEM	MM	MWT	BF	REA		
1	3	73	129	1	18	94	0.025	0.64		
\$F	\$G	\$B	\$C	\$M	\$EN	\$W	RIB ADJ	CWT	MARB	
106	50	156	236	35	-30	54	.27	62	0.6	

This bulls sire is a Hoover No Doubt son from an Objective dam. Performance and balanced EPDs. He is bred with a Total Impact dam and Weight Maker on the top side. He had had a 5.82 lb. ADG at interim.

ACT BW	205 ADJ
81	715
Off Test WT	205 RATIO
1173	100
ADG	ADG RATIO
4.93	120
WDA	WDA RATIO
3.09	92
REA ADJ	FAT ADJ
12.8	.28
IMF ADJ	ADJ YW
3.15	1150
PELVIC AREA	SCROTAL
157.3	36.5
PELVIC HEIGHT	PELVIC WIDTH
11.5	14



RAASCH QUARTERBACK R213

Birth Date: 3/26/22 Bull 20472068 Tattoo: R213

Raasch Performance Cattle • Dean Raasch

Sure S A V QUARTERBACK 7933
S A V REGARD 4863
S A V BLACKCAP MAY 3525



Dam RAASCH MADAME PRIDE 628
S A V RENOWN 3439
RAASCH MADAME PRIDE 4016

CED	BW	WW	YW	CEM	MM	MWT	BF	REA		
0	4.2	92	147	4	19	106	0.015	0.85		
\$F	\$G	\$B	\$C	\$M	\$EN	\$W	RIB ADJ	CWT	MARB	
102	40	142	241	55	-36	71	.32	69	0.32	

A very muscular, deep bodied, easy keeping bull. His dam is a high producing female. Sire is a high growth, big ribeye bull.

ACT BW	205 ADJ
90	670
Off Test WT	205 RATIO
1136	117
ADG	ADG RATIO
2.69	66
WDA	WDA RATIO
3.26	98
REA ADJ	FAT ADJ
13.8	.31
IMF ADJ	ADJ YW
3.34	1187
PELVIC AREA	SCROTAL
159.5	37
PELVIC HEIGHT	PELVIC WIDTH
11.5	13.5



DLR PREMIUM K072

Birth Date: 3/2/22 Bull 20453026 Tattoo: K072

DLR Farm Angus • Dan & Leslie Rinner

Sire JINDRA PREMIUM BLEND 1623
JINDRA PREMIUM BLEND 162 J 4109
JINDRA ELINE ERICA 851 4109



Dam DLR EBONY 0872
JINDRA ACCLAIM J 683 328
JINDRA EBONY J 551 8172

CED	BW	WW	YW	CEM	MM	MWT	BF	REA		
8	1.7	67	115	8	26	94	-0.034	0.46		
\$F	\$G	\$B	\$C	\$M	\$EN	\$W	RIB ADJ	CWT	MARB	
100	46	146	241	49	-34	60	.28	58	0.47	

Lot 53 is a long, smooth made bull that will add length and pounds to your calf crop. His premium blend sire produces calves that come easily and push down hard on the scales in the fall. Suitable for cows or heifers.

ACT BW	205 ADJ
74	711
Off Test WT	205 RATIO
1191	103
ADG	ADG RATIO
3.76	91
WDA	WDA RATIO
3.45	103
REA ADJ	FAT ADJ
12.1	.28
IMF ADJ	ADJ YW
4.06	1316
PELVIC AREA	SCROTAL
160.3	35
PELVIC HEIGHT	PELVIC WIDTH
11.5	13.5



DLR PERFECTION K002

Birth Date: 3/29/22 Bull 20453028 Tattoo: K002

DLR Farm Angus • Dan & Leslie Rinner

Sire JINDRA PERFECTION 826 2340
JINDRA ELBA J 664 826



Dam DLR BLACKCAP 0802
JINDRA ACCLAIM J 039 8202

CED	BW	WW	YW	CEM	MM	MWT	BF	REA		
-1	5	82	147	10	23	119	-0.065	1		
\$F	\$G	\$B	\$C	\$M	\$EN	\$W	RIB ADJ	CWT	MARB	
134	60	194	298	46	-44	57	.25	80	0.56	

Lot 54 is a long, deep made bull with plenty of frame, who will add a lot of pounds and frame to your calf crop. He ranks in Top 10% for WW and YW and Top 1% \$F and 3% \$B. If you are looking for a bull to produce feeders with extra frame and weight, be sure to give him a look.

ACT BW	205 ADJ
79	698
Off Test WT	205 RATIO
1210	101
ADG	ADG RATIO
3.99	97
WDA	WDA RATIO
3.50	105
REA ADJ	FAT ADJ
14.7	.22
IMF ADJ	ADJ YW
3.48	1249
PELVIC AREA	SCROTAL
154.3	38
PELVIC HEIGHT	PELVIC WIDTH
12	13



CFS AJAX S224

Birth Date: 2/19/22 Bull 20482736 Tattoo: S224

Schaefer Angus • Craig Schaefer

Sire S A V AJAX 8885
S A V CUTTING EDGE 4857
S A V EMBLYNETTE 2369



Dam S A V EMBLYNETTE 6042
COLEMAN CHARLO 0256
S A V EMBLYNETTE 4580

CED	BW	WW	YW	CEM	MM	MWT	BF	REA		
1	1.5	50	103	0	31	37	0.029	0.74		
\$F	\$G	\$B	\$C	\$M	\$EN	\$W	RIB ADJ	CWT	MARB	
98	68	166	267	51	-10	52	.56	48	0.96	

SAV Ajax adds thickness, muscle-shape, bone and power. Donor dam is our very best cow. She is a beef cow supreme. Her bull last year was the #1 ICA Feed Efficiency bull. This bull will produce efficient steers and females that will improve maternal traits.

ACT BW	205 ADJ
80	756
Off Test WT	205 RATIO
1303	100
ADG	ADG RATIO
4.16	101
WDA	WDA RATIO
3.40	102
REA ADJ	FAT ADJ
12.8	.58
IMF ADJ	ADJ YW
5.17	1246
PELVIC AREA	SCROTAL
156.5	34.5
PELVIC HEIGHT	PELVIC WIDTH
11.5	14

Lytton Farm Equipment

Your source for new and rebuilt feed mixers!



We pride ourselves in being your "one stop" supplier of Truck Mounted, Trailer Mounted and Stationary Feed Mixers. We also feature bale handling equipment, part sales, and repair facilities for all of your needs.

We invite you to visit us today!

Phone: 712-466-2211
Mike Penniman: 712-830-0440

200 2nd and Main • P.O. Box 200 • Lytton, IA 50561

Fax: 712-466-2625 • www.lyttonfarmequipment.com



Accredited by the Better Business Bureau since 2003



S A V AJAX 8885
SIRE OF LOT 56



CFS AMERICAN FLAG S203

Birth Date: 2/26/22 Bull 20485811 Tattoo: S203

Schaefer Angus • Craig Schaefer

Sire S A V AMERICAN FLAG 0233
ANGUS GS
Dam CFS PRIDE S220
S A V AMERICA 8018
S A V MADAME PRIDE 3145
S A V QUARTERBACK 7933
DEPPE PRIDE 642

CED	BW	WW	YW	CEM	MM	MWT	BF	REA		
-3	5	89	146	-2	22	NA	NA	NA		
\$F	\$G	\$B	\$C	\$M	\$EN	\$W	RIB ADJ	CWT	MARB	
91	NA	NA	NA	47	-37	62	.35	NA	NA	

ACT BW	205 ADJ
83	847
Off Test WT	205 RATIO
1474	100
ADG	ADG RATIO
4.88	119
WDA	WDA RATIO
3.92	117
REA ADJ	FAT ADJ
14.6	.36
IMF ADJ	ADJ YW
2.59	1473
PELVIC AREA	SCROTAL
165.3	39
PELVIC HEIGHT	PELVIC WIDTH
12	14

SAV American Flag adds frame, performance and power plus he is backed by one of the very best cow lines. He is phenotypically excellent, smooth and sound. His dam is a Quarterback daughter stemming from the Deppe Pride cow.



CFS AMERICAN FLAG S202

Birth Date: 2/24/22 Bull 20485829 Tattoo: S202

Schaefer Angus • Craig Schaefer

Sire S A V AMERICAN FLAG 0233
ANGUS GS
Dam SSA BARBARA S508
S A V AMERICA 8018
S A V MADAME PRIDE 3145
S A V MILESTONE 2312
SSA BARBARA SC01

CED	BW	WW	YW	CEM	MM	MWT	BF	REA		
4	3.1	71	128	2	27	87	0.036	0.38		
\$F	\$G	\$B	\$C	\$M	\$EN	\$W	RIB ADJ	CWT	MARB	
82	51	133	216	46	-31	61	.29	47	0.73	

ACT BW	205 ADJ
83	742
Off Test WT	205 RATIO
1276	100
ADG	ADG RATIO
3.92	96
WDA	WDA RATIO
3.38	101
REA ADJ	FAT ADJ
13.8	.30
IMF ADJ	ADJ YW
3.34	1235
PELVIC AREA	SCROTAL
157.8	37
PELVIC HEIGHT	PELVIC WIDTH
11.5	14

SAV American Flag adds frame, performance and power plus he is backed by one of the very best cow lines. He is phenotypically excellent, smooth and sound. His dam is my favorite home raised cow. She is a milk machine. Her calves always ratio at the very top of the herd. This bull will add maternal traits to your cow herd and create high performing steers.



SWANSON BLACK PEARL 732-36

Birth Date: 2/2/22 Bull 20455527 Tattoo: 722

Swanson Angus Farm • Glen Swanson

Sire SWANSON BLACK PEARL 218-105
ANGUS GS
Dam SWANSON QUEEN 36-2036
SWANSON BLACK PEARL 46-280
SWANSON MAY BELLE 105-1013
SYDGEN BLACK PEARL 2006
WERNER QUEEN 2036

CED	BW	WW	YW	CEM	MM	MWT	BF	REA		
6	2.8	76	139	9	35	75	-0.008	0.87		
\$F	\$G	\$B	\$C	\$M	\$EN	\$W	RIB ADJ	CWT	MARB	
130	80	210	354	78	-30	75	.30	80	1.12	

ACT BW	205 ADJ
78	685
Off Test WT	205 RATIO
1446	100
ADG	ADG RATIO
4.58	112
WDA	WDA RATIO
3.62	108
REA ADJ	FAT ADJ
15.2	.33
IMF ADJ	ADJ YW
5.51	1326
PELVIC AREA	SCROTAL
159.3	38
PELVIC HEIGHT	PELVIC WIDTH
12	14

A really nice, growthy bull that is sure to add pounds at the scale and dollars in your pocket.

Online Bidding Available at:



S A V AMERICAN FLAG 0233
SIRE OF LOTS 57 & 58



68

SUMMIT EXCLUSIVE 2226

Birth Date: 2/22/22 Bull 20527550 Tattoo: 2226

Summit Farms • Roy Miller

Sire LD CAPITALIST 316
MUSGRAVE 316 EXCLUSIVE
MUSGRAVE PRIM LASSIE 163-386

ANGUS GS

Dam NICHOLS NEW STANDARD D30
NICHOLS ALYNE G153
NICHOLS ALYNE D62

CED	BW	WW	YW	CEM	MM	MWT	BF	REA			
9	1.1	83	150	13	32	95	0.064	0.66			
\$F	\$G	\$B	\$C	\$M	\$EN	\$W	RIB ADJ	CWT	MARB		
112	49	160	274	63	-38	81	.55	71	0.64		

These 316 Exclusive cattle have a lot of growth in them. If you are looking to add pounds to your calf crop make sure to take a look at him. Top 5% of breed for WW and Top 4% for YW.

ACT BW	205 ADJ		
78	594		
Off Test WT	205 RATIO	1329	105
ADG	ADG RATIO	4.19	102
WDA	WDA RATIO	3.50	105
REA ADJ	FAT ADJ	13.3	.57
IMF ADJ	ADJ YW	3.98	1320
PELVIC AREA	SCROTAL	164.3	36.5
PELVIC HEIGHT	PELVIC WIDTH	12	14



MUSGRAVE 316 EXCLUSIVE
SIRE OF LOT 68

69

SUMMIT GROWTH FUND 2238

Birth Date: 2/27/22 Bull 20422881 Tattoo: 2238

Summit Farms • Roy Miller

Sire BASIN PAYWEIGHT 1682
DEER VALLEY GROWTH FUND
DEER VALLEY RITA 36113

ANGUS GS

Dam NICHOLS EXPECTATION C370
SUMMIT QUEEN 9129
NICHOLS QUEEN D114

CED	BW	WW	YW	CEM	MM	MWT	BF	REA			
11	0.6	78	137	12	38	65	0.048	0.53			
\$F	\$G	\$B	\$C	\$M	\$EN	\$W	RIB ADJ	CWT	MARB		
85	32	117	238	84	-27	87	.49	57	0.3		

Lot 69 is a high growth, Deer Valley Growth Fund son that will add pounds to your calf crop. He had a calf that weaned off over 800 lbs. at weaning with no creep feed. You will like the performance and look of his calf crop.

ACT BW	205 ADJ		
90	779		
Off Test WT	205 RATIO	1380	116
ADG	ADG RATIO	3.80	92
WDA	WDA RATIO	3.68	110
REA ADJ	FAT ADJ	12.3	.51
IMF ADJ	ADJ YW	4.76	1386
PELVIC AREA	SCROTAL	171.5	37
PELVIC HEIGHT	PELVIC WIDTH	12	14.5



LOT 69

70

SUMMIT GROWTH FUND 2236

Birth Date: 2/25/22 Bull 20481241 Tattoo: 2236

Summit Farms • Roy Miller

Sire BASIN PAYWEIGHT 1682
DEER VALLEY GROWTH FUND
DEER VALLEY RITA 36113

ANGUS GS

Dam MCC DAYBREAK
JEM-SUMMIT BLACKCAP 07Y
JEMS BLACKCAP 77

CED	BW	WW	YW	CEM	MM	MWT	BF	REA			
15	-0.5	75	150	14	36	98	0.022	0.78			
\$F	\$G	\$B	\$C	\$M	\$EN	\$W	RIB ADJ	CWT	MARB		
133	57	189	287	41	-41	76	.55	81	0.7		

The dam of Lot 70 is 12-years-old and still doing a wonderful job. If you are looking to add growth, yet have a very moderate BW, make sure to take a look at this Growth Fund son. Make sure to look at his EPDs—he has 15 in the Top 15% of the breed! His maternal granddam was one of our first Angus cows that came from the carcass capital of the Angus world, Gardiner Angus Ranch.

ACT BW	205 ADJ		
82	715		
Off Test WT	205 RATIO	1450	107
ADG	ADG RATIO	4.58	112
WDA	WDA RATIO	3.85	115
REA ADJ	FAT ADJ	14.2	.56
IMF ADJ	ADJ YW	3.81	1426
PELVIC AREA	SCROTAL	172.0	38
PELVIC HEIGHT	PELVIC WIDTH	12.5	14



LOT 70

Spring Yearling Charolais Bulls

17

MC REMINGTON 21E

Birth Date: 3/16/22 Bull M970232 Tattoo: 21E
Mineral Creek Cattle Co. • Jerard Gnade

Sire WC LOCKED DOWN 9812 P ET
ACE-ORR LOCK N LOAD 243P
WC DREAM GIRL 6243 P

Dam WC MISS 7318 P
WC PARAMOUNT 4120 P ET
WC MISS BLEND 2158 P

CE	BW	WW	YW	MCE	MILK	MWW
3.9	0.8	56	89	5.8	24	51
CW	MARB	BF	REA			
15	0.13	0.015	0.5			

MC Rufus 40C is a WC Lockdown son out of a bull we own with Wright Charolais. His WW and YW EPDs are in the Top 25% or higher for the Charolais breed. With his marbling score in the Top 15%, this bull will work in any herd.

ACT BW	205 ADJ
80	789
ACT WT	205 RATIO
1121	102
ADG	ADG RATIO
3.53	100
WDA	WDA RATIO
3.13	102
REA ADJ	FAT ADJ
13	.27
IMF ADJ	ADJ YW
2.68	1141
PELVIC AREA	SCROTAL
157.8	38
PELVIC HEIGHT	PELVIC WIDTH
12	13

18

MC REUBEN 49B

Birth Date: 2/19/22 Bull m970235 Tattoo: 49B
Mineral Creek Cattle Co. • Jerard Gnade

Sire WC LOCKED DOWN 9812 P ET
ACE-ORR LOCK N LOAD 243P
WC DREAM GIRL 6243 P

Dam SUMMIT MS NANCY 94B
CML ENCORE 4Y
TTR NANCY S1146 ET

CE	BW	WW	YW	MCE	MILK	MWW
11.6	-2	56	91	12.6	25	52
CW	MARB	BF	REA			
18	0.18	0.016	0.55			

MC Ruben 49B is a son of WC Lockdown, our spring herd sire, owned with Wright Charolais. His balanced set of EPDs will work in any herd. Smokey calves are becoming a hot commodity for their feeding and grading ability. With feeders in short supply, now would be a good time to try a Charolais bull on your herd.

ACT BW	205 ADJ
78	772
ACT WT	205 RATIO
1215	100
ADG	ADG RATIO
3.72	106
WDA	WDA RATIO
3.17	104
REA ADJ	FAT ADJ
14.3	.19
IMF ADJ	ADJ YW
3.71	1162
PELVIC AREA	SCROTAL
156.5	37
PELVIC HEIGHT	PELVIC WIDTH
11.5	14



Contact us at one of our locations:

Audubon: 712.563.4201
Manning: 712.653.9460
Templeton: 712.699.3712
cattlerepro@amvcms.com

Embryo Transfer • IVF • A.I. Strategies
Ultrasound • Herd Health Consultations



www.amvcms.com

Yearling Simmental Bulls

SYMBOL OF EXCELLENCE

41 LS1 LOADED HAMMER 35K

Birth Date: 3/8/22 Bull 4115052 Tattoo: 35K22

Lawton Acres Simmentals • Tom Lawton

Sire TJSC HAMMER TIME 35D
 MR TR HAMMER 308A ET
 TJSC SO SWEET 104X
Dam LS1 KLOP LOADED
 KLOP LOADED GLORY 30D
 KLOP MISS BREAKER 20E

CE	BW	WW	YW	MCE	MILK	MWW	STAY	API
9.7	2.7	73.9	106.8	2.9	17.6	54.4	11.9	117.9
TI	CW	MARB	BF	REA				
74	21.4	0.17	-0.073	0.73				

ACT BW	205 ADJ
85	700
ACT WT	205 RATIO
1173	100
ADG	ADG RATIO
3.98	107
WDA	WDA RATIO
3.20	99
REA ADJ	FAT ADJ
15.3	.28
IMF ADJ	ADJ YW
2.06	1210
PELVIC AREA	SCROTAL
161.8	34
PELVIC HEIGHT	PELVIC WIDTH
12	13.5

We are bringing the hammer down with this Hammer Time son. This cool baldy is the front pasture kind that will add growth and pounds at weaning time. Or will make those beautiful, blaze face heifers for replacements. This one's future is bright. Grab your sunglasses on sale day.

43 MWM OUTERLIMITS 2207K

Birth Date: 3/18/22 Bull 4122736 Tattoo: 2207K

Marchant Cattle • Matt Marchant

Sire RUBYS OUTER LIMITS 935G
 RUBYS TURNPIKE 771E
 RUBYS LINDA 721E
Dam GLS ASHLEY A11
 MR NLC UPGRADE U8676
 GLS MISS ANSWER X54

CE	BW	WW	YW	MCE	MILK	MWW	STAY	API
11.9	2	95.1	150	7.1	26	73.5	15.6	139.8
TI	CW	MARB	BF	REA				
89.6	43.6	0.17	-0.094	1.06				

ACT BW	205 ADJ
98	682
ACT WT	205 RATIO
1181	97
ADG	ADG RATIO
3.70	100
WDA	WDA RATIO
3.32	102
REA ADJ	FAT ADJ
14.36	.34
IMF ADJ	ADJ YW
3.52	1208
PELVIC AREA	SCROTAL
170.3	36
PELVIC HEIGHT	PELVIC WIDTH
12	14

2207K is an embryo calf out of Ruby's Outer Limits bull and our Ashley A11 donor cow, purchased from the Grass & Lunning Dispersal Sale in 2018. This is the first year that we've sold bulls out of A11, as we've been using her to develop heifers for us. She doesn't disappoint. This bull will add pounds to your calf crop, as well as keeping the look for your replacements.

45 MWM MEGA WIDE 2211K

Birth Date: 3/25/22 Bull 4122729 Tattoo: 2211K

Marchant Cattle • Matt Marchant

Sire STAV MEGA WIDE 64G
 KINNS MEGA WIDE 3316E
 STAV MS DOMINO 135Y
Dam RUBYS RHYTHM 6153D
 RUBYS ABSOLUT 317A
 RUBYS RHYTHM 2208

CE	BW	WW	YW	MCE	MILK	MWW	STAY	API
13	1.3	75.6	116.2	8/3	24.6	62.4	17.2	120.3
TI	CW	MARB	BF	REA				
70.8	27	-0.15	-0.095	0.76				

ACT BW	205 ADJ
83	759
ACT WT	205 RATIO
1174	99
ADG	ADG RATIO
3.43	92
WDA	WDA RATIO
3.36	104
REA ADJ	FAT ADJ
14.37	.19
IMF ADJ	ADJ YW
2.37	1224
PELVIC AREA	SCROTAL
153.5	37.5
PELVIC HEIGHT	PELVIC WIDTH
11.5	13

2211K is the commercial guy's dream bull. He will add length and correct calves' disposition in the process. His sire is a blaze-faced, KINNS Mega Wide that we bought from Stavick Ranch in South Dakota, who has done a great job for us. His dam is one of my favorite cows in the pasture. She is a smaller framed cow that produces big, correct calves every year. We bought her as an open heifer from Ruby's in 2016. She has done nothing but great things for our herd.

65 WS 251K

Birth Date: 2/25/22 Bull 4095093 Tattoo: 251K

Wolfe Simmentals • Bill Wolfe

Sire HOOK'S BEACON 56B
 HOOKS SHEAR FORCE 38K
 HOOKS ZAFIRAH 41Z
Dam WS 251ZH
 JBS BIG CASINO 336Y
 WS 251UZ

CE	BW	WW	YW	MCE	MILK	MWW	STAY	API
13	0.6	85.3	126.6	7.8	26.1	68.7	13.5	150
TI	CW	MARB	BF	REA				
92.5	39.8	0.44	-0.08	1.41				

ACT BW	205 ADJ
76	699
ACT WT	205 RATIO
1194	111
ADG	ADG RATIO
4.02	108
WDA	WDA RATIO
3.17	98
REA ADJ	FAT ADJ
13.62	.18
IMF ADJ	ADJ YW
4.13	1218
PELVIC AREA	SCROTAL
166.0	38
PELVIC HEIGHT	PELVIC WIDTH
13	13

A solid, black bull that tested homozygous black by GeneSeek. Out of a 1st calf heifer he is in the Top 25% for calving ease and Top 20% for API. He ranked 3rd out of 23 contemporaries for weaning weight. Save daughters from this bull.

66 WS 2YHK

Birth Date: 3/10/22 Bull 4095072 Tattoo: 2YHK

Wolfe Simmentals • Bill Wolfe

Sire HOOK'S BEACON 56B
 HOOKS SHEAR FORCE 38K
 HOOKS ZAFIRAH 41Z
Dam WS 2WYH
 WS MO-HAWK 44PYD
 WS 2PWY

CE	BW	WW	YW	MCE	MILK	MWW	STAY	API
12	-0.5	81.5	125	7.3	29.9	70.6	16.7	153.1
TI	CW	MARB	BF	REA				
90.8	34.5	0.4	-0.073	1.35				

ACT BW	205 ADJ
84	745
ACT WT	205 RATIO
1212	119
ADG	ADG RATIO
3.72	100
WDA	WDA RATIO
3.33	103
REA ADJ	FAT ADJ
16.53	.32
IMF ADJ	ADJ YW
4.33	1275
PELVIC AREA	SCROTAL
156.3	36
PELVIC HEIGHT	PELVIC WIDTH
12	13

A solid, black bull that tested homozygous black by GeneSeek. Out of a 1st calf heifer he ranked 1st out of 23 contemporaries for weaning weight. This bull has the largest ribeye in the entire test, and only 8 Angus bulls had a better marbling score.

67 WS 42TAK

Birth Date: 3/21/22 Bull 4095065 Tattoo: 42TAK

Wolfe Simmentals • Bill Wolfe

Sire ASR LONGEVITY Y184
 ASR/GLS PACESETTER U862
 ASR MISS PRIMROSE M231
Dam WS 42PTA
 MR NLC UPGRADE U8676
 WS 42LPT

CE	BW	WW	YW	MCE	MILK	MWW	STAY	API
7.4	2.4	82.4	121.8	5.6	17.2	58.3	15.3	125.8
TI	CW	MARB	BF	REA				
79.2	29.3	0.12	-0.101	0.98				

ACT BW	205 ADJ
89	690
ACT WT	205 RATIO
1162	110
ADG	ADG RATIO
3.80	102
WDA	WDA RATIO
3.29	102
REA ADJ	FAT ADJ
14.81	.29
IMF ADJ	ADJ YW
3.84	1198
PELVIC AREA	SCROTAL
171.0	33
PELVIC HEIGHT	PELVIC WIDTH
12	14

A black, blaze faced bull that tested homozygous black by GeneSeek. He ranked 4th out of 23 contemporaries for weaning weight. His dam has an average calving interval of 367 days and an average weaning weight ratio of 101 on eight calves.

Spring Yearling SimAngus Bulls

6

BFA RED LOVER 11K

Birth Date: 6/5/22 Bull 4128889 Tattoo: 11K

Boggess Family Angus • John Boggess

Sire THSF LOVER BOY B33
HTP/SVF DURACELL T52
RP/MP RIGHT TO LOVE 015V

SimGenetics
PROFIT THROUGH SCIENCE
American Simmental Association

Dam COMM SM

CE	BW	WW	YW	MCE	MILK	MWW	STAY	API
13.5	-1.2	71.8	107.2	5.8	27.7	63.6	9.9	124.4
TI	CW	MARB	BF	REA				
78.7	21	0.36	-0.038	0.47				

This bull is from a first calf heifer and has been a grower from the start. Sired by Lover-boy he should be an easy calver. Check out his EPDs.

ACT BW	205 ADJ
78	648
ACT WT	205 RATIO
1102	100
ADG	ADG RATIO
3.83	100
WDA	WDA RATIO
3.98	118
REA ADJ	FAT ADJ
13.75	.26
IMF ADJ	ADJ YW
2.33	1447
PELVIC AREA	SCROTAL
171.5	32
PELVIC HEIGHT	PELVIC WIDTH
11.5	13

62

WFSF KING K22

Birth Date: 2/22/22 Bull 4118576 Tattoo: K22

Walter Family Stock Farm • Jeremy Walter

Sire TJ LAST CALL 423H
CCR COWBOY CUT 5048Z
TJ 43Z

SimGenetics
PROFIT THROUGH SCIENCE
American Simmental Association

Dam WFSF DANCING QUEEN 8D
VANDES T714 OF MAG
BF MISS ANCHOR GOLD

CE	BW	WW	YW	MCE	MILK	MWW	STAY	API
12.3	3.1	72.2	105.4	5.4	27.1	63.1	17.1	124.1
TI	CW	MARB	BF	REA				
70.7	17.8	0.26	-0.031	0.33				

TJ Last Call 423H may be a new name to hit sale catalogs but his genetics are anything but that. Full sibs include TJ Platte River who is a leading sire for Iron Creek Cattle Co., TJ 92C (Dam of TJ 50K 485H), and many other cows for the Triangle J Ranch program that place a bull or heifer in their high demand sales every year. K22 has high maternal value with his pedigree but anyone in the business knows that Cowboy Cut can still put pounds on the ground.

ACT BW	205 ADJ
89	622
ACT WT	205 RATIO
1294	100
ADG	ADG RATIO
4.13	108
WDA	WDA RATIO
3.41	101
REA ADJ	FAT ADJ
12.37	3.6
IMF ADJ	ADJ YW
3.08	1246
PELVIC AREA	SCROTAL
177.5	39
PELVIC HEIGHT	PELVIC WIDTH
12.5	14.5

7

BFA EASY OUT 10K

Birth Date: 3/15/22 Bull 4128887 Tattoo: 10K

Boggess Family Angus • John Boggess

Sire SANDEEN/SLG EASY OUT 512F
W/C EXECUTIVE ORDER 8543B
SANDEEN DONNA 5120

SimGenetics
PROFIT THROUGH SCIENCE
American Simmental Association

Dam SLG DONNA 071H
CCR WIDE RANGE 9005A
SANDEEN DONNA 5120

CE	BW	WW	YW	MCE	MILK	MWW	STAY	API
12.1	-2	75.1	115.9	5.9	16.7	54.2	15.5	124.9
TI	CW	MARB	BF	REA				
69.9	27.5	-0.09	-0.054	1.01				

This bull is from a first calf heifer, his sire SLG Easy Out is a true calving ease bull. 10K goes back to the Donna cow family on both sides of his pedigree and has a beautiful udder.

ACT BW	205 ADJ
80	672
ACT WT	205 RATIO
1088	100
ADG	ADG RATIO
3.52	92
WDA	WDA RATIO
3.03	90
REA ADJ	FAT ADJ
12.41	.40
IMF ADJ	ADJ YW
2.61	1165
PELVIC AREA	SCROTAL
157.5	32.5
PELVIC HEIGHT	PELVIC WIDTH
12	13

63

WFSF KNIGHT RIDER K82

Birth Date: 3/2/22 Bull 4063619 Tattoo: K82

Walter Family Stock Farm • Jeremy Walter

Sire TJ LAST CALL 423H
CCR COWBOY CUT 5048Z
TJ 43Z

SimGenetics
PROFIT THROUGH SCIENCE
American Simmental Association

Dam WFSF DAPHNE 36D
MR NLC UPGRADE U8676
WFSFR83Z

CE	BW	WW	YW	MCE	MILK	MWW	STAY	API
17.4	-0.1	83.3	127.1	10.1	26.6	68.2	12.9	140.2
TI	CW	MARB	BF	REA				
85.6	34.8	0.38	-0.042	0.91				

TJ Last Call 423H may be a new name to hit sale catalogs but his genetics are anything but that. Full sibs include TJ Platte River who is a leading sire for Iron Creek Cattle Co., TJ 92C (Dam of TJ 50K 485H), and many other cows for the Triangle J Ranch program that place a bull or heifer in their high demand sales every year. Daphne is a no miss cow for us with great feet and udder. In all her years of production she's never given us a heifer, but she has placed a bull that has gone to work in someone's pasture every year.

ACT BW	205 ADJ
78	592
ACT WT	205 RATIO
1221	100
ADG	ADG RATIO
3.95	103
WDA	WDA RATIO
3.28	97
REA ADJ	FAT ADJ
14.5	.44
IMF ADJ	ADJ YW
2.77	1199
PELVIC AREA	SCROTAL
153.5	36.5
PELVIC HEIGHT	PELVIC WIDTH
11.5	13.5

44

MWM THE FAVOR 2220K

Birth Date: 2/18/22 Bull 4122751 Tattoo: 2220K

Marchant Cattle • Matt Marchant

Sire LCDR FAVOR 149F
LCDR WITNESS 541C
WS MISS SUGAR C4

SimGenetics
PROFIT THROUGH SCIENCE
American Simmental Association

Dam MWM THE FACTOR 1709E
VIN-MAR O'RIELLY FACTOR
HL MS SURE BET B34

CE	BW	WW	YW	MCE	MILK	MWW	STAY	API
8.5	2.7	98.5	160.6	4.1	23.1	72.3	16.7	137.1
TI	CW	MARB	BF	REA				
90.1	60.3	0.36	-0.057	1.05				

Another LCDR Favor bulls out of a cow we raised from a moderate framed Heartland Simmentals cow we bought. He won't blow out the scale, but his daughters should be smaller framed and milk great. An added plus is having Miss Sugar and O'Reilly Factor in his bloodlines.

ACT BW	205 ADJ
95	708
ACT WT	205 RATIO
1373	112
ADG	ADG RATIO
4.53	118
WDA	WDA RATIO
3.58	106
REA ADJ	FAT ADJ
14.11	.31
IMF ADJ	ADJ YW
2.72	1310
PELVIC AREA	SCROTAL
184.3	37
PELVIC HEIGHT	PELVIC WIDTH
13.5	14



★ ★ ★ ★ ★
IOWA CATTLEMEN'S
ASSOCIATION



Symbol of
EXCELLENCE
PERFORMANCE BULL SALE

APRIL 14, 2023
TAMA LIVESTOCK AUCTION
6:30 P.M.