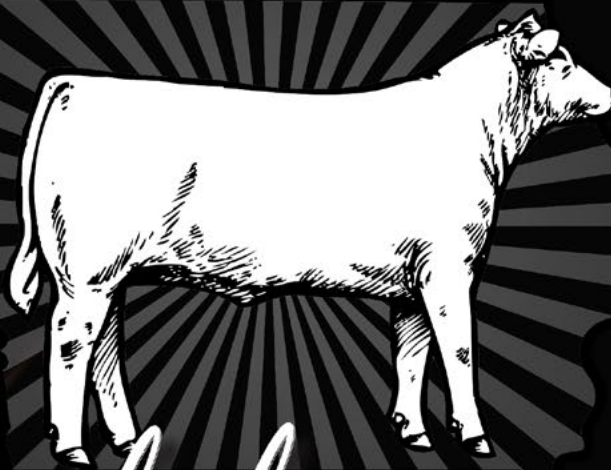


★ ★ ★ ★ ★
**IOWA CATTLEMEN'S
ASSOCIATION**



Symbol of
EXCELLENCE

PERFORMANCE BULL SALE

APRIL 22, 2022
HUMESTON LIVESTOCK EXCHANGE
6:30 P.M.

Welcome

For thirty-seven years, the Iowa Cattlemen's Association has provided third-party verified performance bulls and females through our 'Symbol of Excellence' Performance Bull and Heifer Sales. Annually, we invite seedstock producers from across Iowa and beyond to test their best genetics against one another. In the end, bulls and heifers that make the consignment sales at Bloomfield, Tama, and Humeston must express their potential to sire calves that will tip the scales at weaning, excel on the rail, or be a female that will stand the test of time and raise calves that do so.

This group of 26 bulls started as a group nearly double in size. At ICA, we take pride in offering the best cattle to producers in our great state and others across the country. We hope that you can take comfort in knowing that we have started the selection process for you, as we offer Excellence in this year's consignment sale. In addition to being registered with a breed association, ICA 'Symbol of Excellence' bulls and heifers must surpass the muster of the following qualifications during and after the commercial growyard testing period.

- Minimum 1,100-pound adjusted yearling weight.
- Minimum 11.5-square inch ultrasound yearling ribeye area measurement.
- Must pass a breeding soundness exam with a minimum 32-centimeter scrotal circumference measurement.
- Must rank in the upper 90% for average daily gain amongst their contemporary group.

Yes, comparative analysis is tangible and easy to point out in development facilities. However, we strive to balance performance data during the testing windows with even more important economic factors of bull potency and female longevity. After all, purchasing cattle is an investment, and at the end of the day, if that investment is not expressed through a higher performing calf-crop, then how good of an investment have you made? The group of yearling bulls that are being offered today had a combined average daily gain of 3.52 pounds per day on test. More importantly, these bulls have the tools to excel in even the roughest of terrain-both structurally and reproductively.

Looking for proof that these bulls are the real deal? Take a look at their pedigrees, the writing is on the wall. In the yearling group alone, over half rank in the upper 30% in their breed for WW & YW EPDs with a number of these lots ranking similarly within their breed for CED and BW EPDs. Also, we are pleased to offer you trait leaders among the bull groups.

Each individual has been put through one of the most meticulous performance testing programs in the country. These bulls have been selected to participate in this sale on structure and reproductive soundness, and have had to excel in all performance categories. Your purchase is backed by as much proof that is available to ensure that your next calf crop will rattle the scales at weaning and/or perform in the feedyard and on the rail for increased profitability.

Thank you for your continued support, trust, and belief in the consignor group and your Iowa Cattlemen's Association!

Sincerely,
Skylar Brittain
Southeast Iowa Membership Manager
Iowa Cattlemen's Association
515-250-0747



Sale Information

SALE LOCATION:

Humeston Livestock Exchange, LLC
1026 N Front St., Humeston, IA 50123
641-877-6092

SALE REPRESENTATIVES:

Iowa Cattlemen's Association, Skylar Brittain.....(515) 250-0747
Iowa Cattlemen's Association, Matt Deppe..... (515) 468-7785
Iowa Cattlemen's Association, Tanner Lawton.....(515) 777-5815
Livestock Plus, Inc, Mike Sorensen.....(641) 745-7949
Midwest Marketer, Austin Brandt.....(712) 621-1829
LiveAuctions.TV, Mariah Miller..... (712) 294-4731

AUCTIONEERS:

Jared Miller.....(515) 608-0935

SALE INFORMATION:

Bids may be accepted by sale representatives.
Sale Day Phone..... (515) 250-0747 or (515) 777-5815
A final sale order and supplement sheet will be available on sale day.

SALE TERMS:

All cattle sold at the Humeston 'Symbol of Excellence' Sale will sell under the terms of their respective breed associations.

TESTING FACILITY INFORMATION:

Please make arrangements with the following individuals to view cattle prior to delivery to Humeston Livestock Exchange, LLC.
Werner Feed Efficiency, Joe Werner..... (641) 344-4926

SALE INFORMATION WEBSITE:

Utilize the following link to view Online Catalog, Videos, & Performance Test Data: <https://bit.ly/3LwPziI>

SELLING 24 YEARLING BULLS

19 Angus Spring Yearlings
3 Simmental Spring Yearlings
2 SimAngus Spring Yearlings

SALE VIDEOS:

Visit this link to view sale consignment videos: <https://bit.ly/3DxjyEs>

LIVESTOCK INSURANCE:

Available through our ICA Policy following your purchase of sale consignments.
Liberty Mutual..... Jeanne Conover.....(515) 491-1335

LiveAuctions.TV
2.0

INTERNET BIDDING:

Link: <https://liveauctions.tv/auction/1527/detail>

EPD PROFILES:

Catalog EPD Profiles were generated on March 30, 2022
All cattle have been genomically tested for enhanced profiles

PURCHASE DELIVERY:

Iowa Cattlemen's Association will assist in providing reliable and affordable trucking following purchases of cattle.

Sale Barn Cafe will be open prior to sale.

Symbol of Excellence Sale Order

TAG	BREED		PRICE	DESCRIPTION
172	Angus	High Indexing		
162	% Simmental	High Indexing		
168	Simmental	High Indexing		
173	Angus			
144	Angus			
96	Angus			
92	Angus			
105	Angus			
145	Angus			
150	Angus			
171	Simmental			
170	Simmental			
165	% Simmental			
99	Angus			
160	Angus			
103	Angus			
159	Angus			
135	Angus			
119	Angus			
155	Angus			
101	Angus			
100	Angus			
106	Angus			
97	Angus			

Consignors

BOGGESS FAMILY ANGUS

John Boggess
2570 Snyder Ave.
Oskaloosa, IA 52577
(641) 295-2126
jonbog777@gmail.com

HEARTLAND SIMMENTALS

Kirk Lynch
1849 190th St.
New Hampton, IA 50659
(563) 379-1190
kirklynch@gmail.com

RAASCH PERFORMANCE CATTLE

Dean Raasch
606 N Main St.
Bridgewater, IA 50837
(712) 779-0595
bulls4u@windstream.net

TWIN CREEK ANGUS

Mark, Ruth, April & Rachel Kuhn
1799 293rd Ave.
Fort Atkinson, IA 52114
(563) 419-6441
abstca@acegroup.cc

CARMAR FARMS LTD.

Steve Johnston
Box 500
Nevada, IA 50201
(641) 895-9704
stevej@hertz.ag

INDIAN HILLS COMMUNITY COLLEGE

Brydon Kaster
721 N 1st St.
Centerville, IA 52544
(641) 895-4461
brydon.kaster@indianhills.edu

SPENCER'S GROVE FARMS

Larry Bridgewater
4717 Spencer's Grove Rd.
Walker, IA 52352
(319) 560-9378
Lbridg1457@windstream.net

WILLER TIMBER RIDGE

Ted and Kathy Willer
4342 S CR. 300 E
Greencastle, IN 46135
(765) 721-0420
wtrangus@wtrangus.com

DLH ANGUS

D Lynn Henry
15009 140th Ave.
Indianola, IA 50125
(515) 974-7156
lynn@dlhgrafx.com

MARK & SHERYL LEONARD

1362 Hwy 59
Holstein, IA 51025
(712) 830-9032
mark@agcomfinancial.com

SWANSON ANGUS FARMS

Glen & Judy Swanson
800 6th Ave.
Durant, IA 52747
(563) 940-6429

WOLFE SIMMENTALS

Bill Wolfe
13908 50th Ave.
Prole, IA 50229
(515) 681-5699
bjwolfe@myomnitel.com

DLR FARMS

Dan and Leslie Rinner
1751 Hoover St.
Osceola, IA 50213
(641) 414-0998
dryellowdog@yahoo.com

NORTH RIVER CATTLE CO.

Dan Hanrahan
3283 155th St.
Cumming, IA 50061
(515) 681-4619
dhanraha@aol.com

ANGUS BREED AVERAGE EPD & \$VALUES

(NON-PARENT BULLS)

CED	BW	WW	YW	RADG	DMI	YH	SC	DOC	CLAW	ANGLE	PAP	HP	CEM	MILK	MW	MH	\$EN	CW	MARB	RE	FAT	\$M	\$W	\$F	\$G	\$B	\$C
+6	+1.2	+59	+105	+.25	+1.03	+.6	+.83	+17	+.50	+.49	+1.31	+11.8	+9	+26	+63	+.4	-15	+46	+.60	+.60	+.012	+61	+61	+86	+47	+135	+236

PUREBRED SIMMENTAL AVERAGE EPDs

API	TI	CE	BW	WW	PWG	YW	MCE	MLK	MWW	STY	DOC	CWT	YG	MRB	BF	REA	SF
129.32	77.60	10.70	1.70	77.30	0.24	115.10	5.60	23.40	61.90	16.40	11.40	28.50	-0.42	0.11	-0.09	0.87	-0.33



Phenotypic Feed Efficiency

Understanding Data Outputs

Production efficiency is one goal in the selection and development of livestock; however, there are two underlying philosophies from which one may define “efficient” and direct future outcomes.

The first is *maintenance* efficiency. This is of primary importance in those cow herds where an efficient cow is considered one that can subsist on low inputs and yet provide a respectable calf each year. The second is *production* efficiency which generally is applied to feedlot cattle where the goal is minimal pounds of feed and maximum edible pounds of output. These two efficiencies may not be the same because low maintenance cows might tend to be easy fleshing and earlier maturing while the feedlot efficient counterparts may be larger, leaner and faster growing.

Feed efficiency is defined in many ways including the newer terms of RFI (residual feed intake) and R-ADG (residual average daily gain.) A discussion of these methods follows descriptions of the simpler efficiency evaluations.

Ranking on Phenotypic Residual Average Daily Gain													
Fed 5/18/2010 through 7/27/2010 70 days													
RADG Rank	Ear Tag	Start Wt.	End Wt.	ADG	R-ADG ⁴	12 Rib		DMI	Adj. DMI ⁵	RFI ³	RFI Rank	Raw F:G ¹	Adj. F:G ²
						Fat Cover							
1	HA403	800	969	2.42	0.86	0.41		19.1	-1.7	-1.79	2.00	7.91	8.39
2	HA08	942	1136	2.76	0.23	0.50		20.9	0.4	-1.07	3.00	7.57	7.34
3	HAJ73	984	1187	2.89	0.16	0.62		24.8	0.3	2.46	8.00	8.56	8.10
4	HA15	920	1118	2.83	0.00	0.41		23.3	0.7	1.41	6.00	8.23	8.07
5	HA6432	816	923	1.53	-0.03	0.44		21.9	1.1	1.65	7.00	14.37	15.36
6	HA35	982	1161	2.55	-0.13	0.51		19.8	0.8	-2.20	1.00	7.77	7.40
7	HA85	1058	1181	1.75	-0.46	0.80		21.4	-0.8	-0.39	4.00	12.22	11.33
8	HA04	746	807	0.86	-0.63	0.19		19.2	-0.9	-0.07	5.00	22.43	25.51

Feed Conversion¹ (F:G) = pounds of feed (on a 100% dry matter basis) required for one pound of live weight gain

(Feed Dry Matter / Weight Gain.)

Generally this measure is used in commercial feedyards to indicate efficiency. This value makes no adjustment for diet energy content or age/weight differences in measured animals. It's simply raw pounds of feed required per raw pounds of weight retained. Because of this, it is proper to use this type of measure only with cattle of similar age on the same ration. A lower value is desired.

Feed Efficiency (G:F) = pounds of live weight gain observed per unit of feed dry matter consumed. This is the reciprocal of “Feed Conversion” and has the same issues. These terms often are used interchangeably and allow users to arrive at the same conclusion. A higher value is desired.

Adjusted Feed Conversion² This value is the base Feed:Gain value multiplied by the contemporary group's metabolic weight divided by the individual's metabolic weight. The formula is as follows:

$(\text{Group Avg Wt.}^{75} / \text{Individual Wt.}^{75}) \times \text{Individual's Feed to Gain.}$

Note that this adjustment attempts to remove the age or size differences of the animal when put on test. This currently is the standard of feed conversion efficiency used by the Beef Improvement Federation. A lower value is desired.

RFI³ (Residual Feed Intake): This is defined as the difference between actual feed intake and that predicted on the basis of the animal's gain and maintenance requirements for its body weight. The calculation is more complex because mathematical statistics are used to determine the RFI value. A prediction equation is developed by using regression of the actual feed intakes, gains and average weights on test of the animal's contemporaries. The calculation factors in both maintenance efficiency (the easy keeper concept) and production efficiency (pounds in vs. pounds out like the normal Feed:Gain equation).

An average animal would have an RFI of “0”. Animals with a negative RFI value are favored because they have consumed less feed for their weight and gain than

the average of their herd mates. Animals with a positive RFI number would be consuming more feed for their weight and gain than the average of their herd mates.



Measurement of individual intake

For the RFI calculation to be relevant in the evaluation of potential breeding stock, it's of utmost importance that it be calculated in the context of the weaning contemporary group and used in index selection (multi-trait selection.)

This is important because the pre-weaning environment, pasture management, creep feed availability and age of dam (milking ability as seen between first calf heifers and older cows) has been shown to have a marked effect on the feed conversion outcomes in Iowa State

University trials. This issue is not seen in the same light by all because it appears that many centralized test stations tend to create a "feeding contemporary group" and evaluate cattle in that context. For this reason test stations try to equalize pre-test environments by having a 3-to-5 week warm-up period.

R-ADG⁴ (Residual Average Daily Gain): This is defined as the difference between actual weight gain and the gain predicted on the basis of dry matter intake, maintenance of body weight and fat cover. Like RFI, a regression equation is developed using the actual gains, feed intakes, average weights on test and fat cover of an animal's herd mates. This unique equation is then used to calculate the individual R-ADG.

An average animal has an R-ADG of "0." Animals with a positive R-ADG value are favored because they have higher daily gains for the amount of feed consumed and their body composition (% fat.) Animals with a negative R-ADG value are unfavorable because they have lower daily gains for the amount of feed consumed and their body composition. Again like RFI, relevance of this evaluation depends on a comparison of animals from the same weaning contemporary group or put through a substantial warm-up period prior to their feed intake and gain test.

Adj. DMI⁵ (Adjusted Dry Matter Intake): This is defined as the feed dry matter intake adjusted by multiplying the contemporary group's average mid-point metabolic weight, and then dividing by the individual's mid-point metabolic weight. The final value is the difference by subtracting out the contemporary group average. A lower value is desired.

Comparison of feed efficiency terms

Method	More Desirable	Less Desirable	Difference
Raw F:G – Raw Feed Conversion: usually on dry matter basis (lbs feed/lb of gain)	Lower values Example: 4.5 lbs	Higher values Example 7.5 lbs	Example: 3.0 lbs of feed
Adj. F:G – Adjusted Feed Conversion: usually on dry matter basis (lbs feed/lb of gain)	Lower values Example: 4.5 lbs	Higher values Example: 6.5 lbs	Example: 2 lbs of dry matter
RFI – Residual Feed Intake: usually on dry matter basis	Negative values Example: -1.7	Positive values Example: +1.5	Example: 3.2 lbs of feed
R-ADG – Residual Average Daily Gain: usually on lbs gained per day	Positive values Example: +0.86	Negative values Example: -.63	Example: 1.49 lbs of average daily gain
Adj. DMI – Adjusted Dry Matter Intake: should be on dry matter basis	Negative values Example: -0.9	Positive values Example: +0.8	Example: 1.7 lbs of feed

File: Animal Science 11

Prepared by Garland Dahlke, Daryl Strohbehn and Sherry Hoyer, Iowa Beef Center, Iowa State University.

IOWA STATE UNIVERSITY
University Extension

... and justice for all

The U.S. Department of Agriculture (USDA) prohibits discrimination in all its programs and activities on the basis of race, color, national origin, gender, religion, age, disability, political beliefs, sexual orientation, and marital or family status. (Not all prohibited bases apply to all programs.) Many materials can be made available in alternative formats for ADA clients. To file a complaint of discrimination, write USDA, Office of Civil Rights, Room 326-W, Whitten Building, 14th and Independence Avenue, SW, Washington, DC 20250-9410 or call 202-720-5964. Issued in furtherance of Cooperative Extension work, Acts of May 8 and June 30, 1914, in cooperation with the U.S. Department of Agriculture. Gerald A. Miller, interim director, Cooperative Extension Service, Iowa State University of Science and Technology, Ames, Iowa.

Feed Efficiency

Lot Number	Feed Cost per Pound of Gain (\$0.104/lb. DM)	Cost of Gain x 600 lbs.	Cost of Gain Rank	RADG	RADG Rank	RFI	RFI Rank	12/3/21 Start Wt.	3/12/22 End Wt.	ADG	Fat Cover	DMI	Raw F:G	Adj. F:G
160	\$0.530	\$317.86	1	0.99	1	-4.52	1	966	1376	4.18	0.47	22.5	5.37	4.73
92	\$0.581	\$348.77	2	0.89	2	-1.88	6	723	1170	4.56	0.19	23.8	5.22	5.19
138	\$0.597	\$358.18	3	0.71	3	-0.97	8	698	1156	4.67	0.30	24.8	5.30	5.33
91	\$0.640	\$383.71	4	0.26	8	1.15	34	749	1206	4.67	0.44	27.4	5.87	5.71
155	\$0.644	\$386.40	5	0.52	4	-3.10	2	914	1256	3.49	0.30	21.3	6.09	5.75
98	\$0.645	\$387.07	6	0.26	9	0.53	28	875	1298	4.32	0.38	27.0	6.26	5.76
173	\$0.650	\$389.76	7	0.23	11	1.16	35	978	1399	4.30	0.28	28.6	6.66	5.80
159	\$0.657	\$394.46	8	0.21	12	0.10	21	902	1303	4.10	0.40	26.2	6.39	5.87
172	\$0.669	\$401.18	9	0.24	10	0.13	22	865	1262	4.06	0.32	25.7	6.34	5.97
105	\$0.678	\$406.56	10	0.39	5	-1.85	7	713	1075	3.70	0.28	21.1	5.71	6.05
103	\$0.698	\$418.66	11	0.30	7	-2.08	4	688	1033	3.53	0.33	20.1	5.70	6.23
119	\$0.707	\$424.03	12	0.36	6	-1.94	5	909	1234	3.32	0.13	21.9	6.59	6.31
161	\$0.710	\$426.05	13	0.04	17	-0.19	18	841	1204	3.70	0.43	24.1	6.51	6.34
145	\$0.711	\$426.72	14	0.13	14	-0.07	20	828	1194	3.73	0.29	24.2	6.48	6.35
144	\$0.712	\$427.39	15	0.11	16	-0.31	15	924	1275	3.59	0.30	24.5	6.82	6.36
150	\$0.741	\$444.86	16	0.12	15	-0.16	19	780	1129	3.57	0.19	23.1	6.48	6.62
99	\$0.744	\$446.21	17	-0.03	20	0.27	25	759	1118	3.66	0.36	23.6	6.44	6.64
163	\$0.745	\$446.88	18	0.03	18	0.51	27	720	1087	3.75	0.27	23.7	6.32	6.65
109	\$0.766	\$459.65	19	0.16	13	-2.25	3	716	1013	3.04	0.24	18.7	6.17	6.84
96	\$0.768	\$460.99	20	-0.37	37	2.72	40	914	1285	3.79	0.39	28.0	7.39	6.86
171	\$0.771	\$462.34	21	-0.02	19	0.16	23	864	1195	3.38	0.20	23.7	7.02	6.88
90	\$0.771	\$462.34	22	-0.15	26	1.72	36	756	1126	3.78	0.28	25.4	6.71	6.88
162	\$0.775	\$465.02	23	-0.31	34	3.64	41	876	1262	3.94	0.19	29.0	7.36	6.92
168	\$0.794	\$476.45	24	-0.08	22	0.23	24	757	1086	3.36	0.23	22.6	6.74	7.09
170	\$0.802	\$481.15	25	-0.06	21	-0.53	12	900	1199	3.06	0.21	22.4	7.33	7.16
165	\$0.805	\$483.17	26	-0.22	30	2.04	38	793	1145	3.59	0.18	25.5	7.10	7.19
97	\$0.818	\$490.56	27	-0.15	25	-0.37	14	806	1108	3.08	0.29	21.7	7.04	7.30
135	\$0.818	\$490.56	28	-0.51	39	1.83	37	959	1285	3.33	0.49	26.2	7.86	7.30
156	\$0.819	\$491.23	29	-0.16	27	-0.83	10	892	1179	2.93	0.33	21.6	7.39	7.31
164	\$0.820	\$491.90	30	-0.14	24	-0.22	16	743	1052	3.15	0.27	21.4	6.79	7.32
157	\$0.823	\$493.92	31	-0.29	31	-0.70	11	954	1237	2.89	0.47	22.3	7.69	7.35
106	\$0.830	\$497.95	32	-0.20	29	0.57	29	621	953	3.39	0.30	21.6	6.38	7.41
117	\$0.850	\$510.05	33	-0.36	36	0.99	31	926	1226	3.06	0.29	24.2	7.90	7.59
100	\$0.851	\$510.72	34	-0.18	28	-0.42	13	812	1097	2.91	0.23	21.2	7.27	7.60
167	\$0.860	\$516.10	35	-0.13	23	-0.94	9	770	1045	2.81	0.20	19.9	7.09	7.68
152	\$0.884	\$530.21	36	-0.49	38	2.70	39	714	1047	3.40	0.24	24.8	7.29	7.89
166	\$0.894	\$536.26	37	-0.30	32	0.68	30	862	1144	2.88	0.13	22.7	7.89	7.98
151	\$0.896	\$537.60	38	-0.31	33	-0.22	17	833	1102	2.74	0.25	21.1	7.69	8.00
101	\$0.899	\$539.62	39	-0.54	40	1.08	33	846	1133	2.93	0.40	23.1	7.87	8.03
154	\$0.900	\$540.29	40	-0.36	35	0.28	26	696	982	2.92	0.29	20.7	7.09	8.04
153	\$0.984	\$590.69	41	-0.63	41	1.03	32	736	1001	2.70	0.36	21.2	7.85	8.79

Avg	\$0.762	\$457.40	21	0.00	21	0.00	21	819	1163	3.51	0.30	23.5	6.77	6.81
Min	\$0.530	\$317.86	1	-0.63	1	-4.52	1	621	953	2.70	0.13	18.7	5.22	4.73
Max	\$0.984	\$590.69	41	0.99	41	3.64	41	978	1399	4.67	0.49	29.0	7.90	8.79

Yearling Angus Bulls

SYMBOL OF EXCELLENCE

92

L B SILFA BC X 140

Birth Date: 3/20/21 Bull 20178249 Tattoo: 140
Spencer's Grove Farms • Larry Bridgewater

Sire 44 BIG COMMERCE 6076
SILFA BC X 3710B-868
FF RITA 5E66 OF 3125 3710B

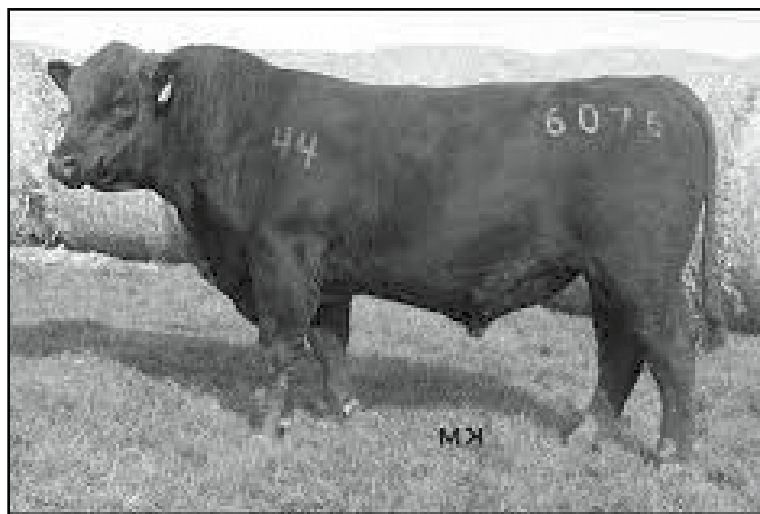


Dam BHA CC&7 2522
G C EVENING STAR 539
G C EVENING STAR 053

ANGUS GS
Powered by Nogen GeneSeek

CED	BW	WW	YW	CEM	MM	MWT	\$M	\$W	ADJ FG
6	2.3	69	124	9	34	90	58	74	5.2
\$F	\$G	\$B	\$C	\$EN	RIB ADJ	CWT	MARB	BF	REA
115	59	174	285	170	.2	64	3.57	0	0.9

ACT BW	205 ADJ
77	652
Off Test WT	205 RATIO
1170	102
ADG	ADG RATIO
4.52	128
WDA	WDA RATIO
3.28	102
REA ADJ	FAT ADJ
12	0.2
IMF ADJ	ADJ YW
3.6	1194
PELVIC AREA	SCROTAL
170	40.5
PELVIC HEIGHT	PELVIC WIDTH
14	12
COG/POUND	COG 600LBS
0.6	348.8



44 BIG COMMERCE 6076
GRANDSIRE OF LOT 92

96

DLH PAYRAISE 2106

Birth Date: 3/11/21 Bull 20250623 Tattoo: 2106
DLH Angus • D Lynn Henry

Sire CONNEALY PAYRAISE
CONNEALY PAYRAISE 7184
BLACK CLEO OF CONANGA 7184



Dam V A R INDEX 3282
DLH JETTIE 132 163
DLH JETTIE 83 132

ANGUS GS
Powered by Nogen GeneSeek

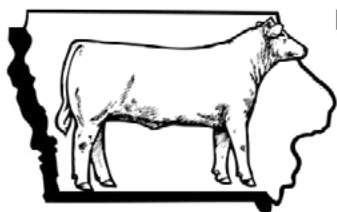
CED	BW	WW	YW	CEM	MM	MWT	\$M	\$W	ADJ FG
11	0.6	63	125	13	31	59	69	72	6.9
\$F	\$G	\$B	\$C	\$EN	RIB ADJ	CWT	MARB	BF	REA
96	68	164	282	173.8	.39	50	7.13	0	0.9

ACT BW	205 ADJ
70	752
Off Test WT	205 RATIO
1285	101
ADG	ADG RATIO
3.75	106
WDA	WDA RATIO
3.51	110
REA ADJ	FAT ADJ
13.9	0.4
IMF ADJ	ADJ YW
7.13	1282
PELVIC AREA	SCROTAL
173.8	35
PELVIC HEIGHT	PELVIC WIDTH
14.5	12
COG/POUND	COG 600LBS
0.8	461



CONNEALY PAYRAISE 7184
SIRE OF LOT 96

Here is a high (+1.07) marbling meat wagon of a bull. He has four traits in the top 10%, four traits in the top 15% and two in the top 20% of the Angus breed. He is very attractive as well. His mother has a 369 day calving interval and a super dairy udder. She has four WW at 103 and four YW at 105. He is a bull that really sticks out.



IOWA CATTLEMEN'S ASSOCIATION

YOUR FUTURE IS OUR MISSION.

Renew Today!

www.iacattlemen.org



DLH RAMPAGE 2108

Birth Date: 3/15/21 **Bull** 20177324 **Tattoo:** 2108
DLH Angus • D Lynn Henry

Sire MCC DAYBREAK
QUAKER HILL RAMPAGE OA36
QHF BLACKCAP 6E2 OF 4V16 4355

Dam SITZ UPWARD 307R
DLH POWER LASS 910 134
DLH POWER LASS 413 910



CED	BW	WW	YW	CEM	MM	MWT	\$M	\$W	ADJ FG
7	2	61	105	8	25	54	51	63	7.3
\$F	\$G	\$B	\$C	\$EN	RIB ADJ	CWT	MARB	BF	REA
94	44	137	229	143.8	.3	53	4.26	0	0.8

ACT BW	205 ADJ
80	685
Off Test WT	205 RATIO
1108	92
ADG	ADG RATIO
3.05	86
WDA	WDA RATIO
3.06	96
REA ADJ	FAT ADJ
12.9	0.3
IMF ADJ	ADJ YW
4.27	1117
PELVIC AREA	SCROTAL
143.8	35
PELVIC HEIGHT	PELVIC WIDTH
13	11
COG/POUND	COG 600LBS
0.8	490.6

Lot 97 is a Rampage son with good feet and legs as well as a super profile. His mother has produced some of our top cows, including the mother of the high EPD bull in the Tama sale. She has a calving interval of 359 days on seven calves. Seven WW at 100 and two YW at 102.



CMF RAMESSES M71

Birth Date: 4/6/21 **Bull** 20157482 **Tattoo:** M71
CarMar Farms Ltd. • Steve Johnston

Sire QUAKER HILL RAMPAGE OA36
SPRINGFIELD RAMESSES 6124
WELYTOK TOTAL 10 ERIANNA 3B2



Dam CMF QUIET LAD Z04
CMF BLACKCAP G80
CMF BLACKCAP B53



CED	BW	WW	YW	CEM	MM	MWT	\$M	\$W	ADJ FG
9	-2.2	70	134	13	35	116	41	81	6.6
\$F	\$G	\$B	\$C	\$EN	RIB ADJ	CWT	MARB	BF	REA
119	63	182	277	150	.38	65	4.94	0	1

ACT BW	205 ADJ
70	651
Off Test WT	205 RATIO
1118	115
ADG	ADG RATIO
3.63	103
WDA	WDA RATIO
3.29	103
REA ADJ	FAT ADJ
13.7	0.4
IMF ADJ	ADJ YW
5.04	1195
PELVIC AREA	SCROTAL
150	36
PELVIC HEIGHT	PELVIC WIDTH
12.5	11.5
COG/POUND	COG 600LBS
0.7	446.2

A Ramesses son that is coming on strong with production rankings in the top 10% of the breed for YW and RADG as well as the top 3% in BW and YH. In test the Ramesses bull excelled with an ADG of 3.63 and ranks in the top 5% of the breed for \$F and \$B. With the genetics and numbers to prove it, this bull has all the makings of becoming a great herd bull.



SPRINGFIELD RAMESSES 6124
SIRE OF LOT 99



CMF ENFORCER M18

Birth Date: 3/17/21 **Bull** 20157483 **Tattoo:** M18
CarMar Farms Ltd. • Steve Johnston

Sire SYDGEN ENHANCE
S S ENFORCER E812
S S MISS DAYBREAK K011 3K17



Dam H&K IMPRESSIVE
CMF ELBA B40
CMF ELBA T45



CED	BW	WW	YW	CEM	MM	MWT	\$M	\$W	ADJ FG
8	0.4	68	115	11	27	53	50	77	7.6
\$F	\$G	\$B	\$C	\$EN	RIB ADJ	CWT	MARB	BF	REA
83	61	144	237	174.3	.24	42	5.26	0	0.5

ACT BW	205 ADJ
80	609
Off Test WT	205 RATIO
1097	107
ADG	ADG RATIO
2.88	82
WDA	WDA RATIO
3.05	95
REA ADJ	FAT ADJ
12.4	0.2
IMF ADJ	ADJ YW
5.26	1111
PELVIC AREA	SCROTAL
169.3	35.5
PELVIC HEIGHT	PELVIC WIDTH
14	12
COG/POUND	COG 600LBS
0.9	510.7

This Enforcer son is showing real promise while ranking in the top 10% of the breed in YH and the top 15% in \$W and \$G. His sire touts impressive numbers and are in the top 1% of the breed in YW, RADG, \$B and \$C. There is no doubt this Enforcer son will deliver power and performance to your cow herd.



S S ENFORCER E812
SIRE OF LOT 100



IHCC WARRIOR 1531

Birth Date: 4/13/21 **Bull** 20210666 **Tattoo:** 1531
Indian Hills Community College • Brydon Kaster

Sire S A V GOVERNOR 6844
COLEMAN CHARLO 0256
S A V BLACKCAP MAY 4136

Dam IHCC

WERNER TOUCHDOWN 3065

IHCC ELLIE 31



CED	BW	WW	YW	CEM	MM	MWT	\$M	\$W	ADJ FG
7	-0.2	51	97	10	20	38	47	49	8
\$F	\$G	\$B	\$C	\$EN	RIB ADJ	CWT	MARB	BF	REA
62	49	11	191	157.5	.43	25	4.85	0	0.3

ACT BW	205 ADJ
82	NA
Off Test WT	205 RATIO
1133	NA
ADG	ADG RATIO
2.9	82
WDA	WDA RATIO
3.4	106
REA ADJ	FAT ADJ
13.3	0.4
IMF ADJ	ADJ YW
4.85	1234
PELVIC AREA	SCROTAL
157.5	35.5
PELVIC HEIGHT	PELVIC WIDTH
13	11.5
COG/POUND	COG 600LBS
0.9	539.6



S A V GOVERNOR 6844
SIRE OF LOT 101

This Governor son will bring power and consistency to your herd. His granddam is SAV Blackcap May 4136 that has generated over \$10 million dollars in progeny sales for Schaff Angus Valley. This bull's genetics trace back to the Werner Family Angus lines and have been improved through an AI only program facilitated by IHCC Ag students since 2012.



T C A LEADING ROLE 164

Birth Date: 4/23/21 **Bull** 20090714 **Tattoo:** 164
Twin Creek Angus • Mark & Ruth Kuhn

Sire 44 LEADING ROLE 6273
RITO 9Q20 OF RITA 5F56 GHM
DSA INGENUITY S730 1209



Dam T C A FOREMAN BLACKCAP 804
V A R FOREMAN 3339
T C A ACCRUEL BLACKCAP 605



CED	BW	WW	YW	CEM	MM	MWT	\$M	\$W	ADJ FG
13	-0.5	62	114	9	34	53	65	77	6.2
\$F	\$G	\$B	\$C	\$EN	RIB ADJ	CWT	MARB	BF	REA
100	76	176	289	172.5	.37	49	4.99	0	0.9

ACT BW	205 ADJ
83	827
Off Test WT	205 RATIO
1033	114
ADG	ADG RATIO
3.49	99
WDA	WDA RATIO
3.2	100
REA ADJ	FAT ADJ
14.1	0.3
IMF ADJ	ADJ YW
4.99	1197
PELVIC AREA	SCROTAL
162	36
PELVIC HEIGHT	PELVIC WIDTH
13.5	12
COG/POUND	COG 600LBS
0.7	418.7

Maternal excellence! This bulls dam is on the way to becoming a Pathfinder cow, and the next two dams back are both Pathfinders! A great calving ease bull that brings the total package of growth, marbling and maternal. 827 WW with no creep feed.



T C A LEADING ROLE 163

Birth Date: 4/20/21 **Bull** 20090712 **Tattoo:** 163
Twin Creek Angus • Mark & Ruth Kuhn

Sire 44 LEADING ROLE 6273
RITO 9Q20 OF RITA 5F56 GHM
DSA INGENUITY S730 1209



Dam T C A ACCRUEL BLACKCLASS 807
T C A ACCRUEL 260
T C A IMPACT BLACKCLASS 204



CED	BW	WW	YW	CEM	MM	MWT	\$M	\$W	ADJ FG
14	-0.3	77	130	15	30	96	65	87	6.1
\$F	\$G	\$B	\$C	\$EN	RIB ADJ	CWT	MARB	BF	REA
110	68	178	296	170.5	.32	61	1.04	5	0.73

ACT BW	205 ADJ
81	799
Off Test WT	205 RATIO
1075	110
ADG	ADG RATIO
3.66	104
WDA	WDA RATIO
3.3	103
REA ADJ	FAT ADJ
11.9	0.3
IMF ADJ	ADJ YW
6.18	1234
PELVIC AREA	SCROTAL
165	36
PELVIC HEIGHT	PELVIC WIDTH
13.5	11.5
COG/POUND	COG 600LBS
0.7	406.6

Top 4% CED, top 10% WW, top 15% CW and top 25% marbling puts it all together. 799 WW with no creep feed.



T C A LEADING ROLE 165

Birth Date: 4/29/21 **Bull** 20090713 **Tattoo:** 165
Twin Creek Angus • April Kuhn

Sire 44 LEADING ROLE 6273
RITO 9Q20 OF RITA 5F56 GHM
DSA INGENUITY S730 1209



Dam T C A RAMPAGE QUEEN 806
QUAKER HILL RAMPAGE 0A36
T C A MARQUIS QUEEN 604



CED	BW	WW	YW	CEM	MM	MWT	\$M	\$W	ADJ FG
12	-0.4	56	104	14	19	33	63	55	7.4
\$F	\$G	\$B	\$C	\$EN	RIB ADJ	CWT	MARB	BF	REA
80	62	142	247	264.6	NA	33	.80	17.5	1.01

ACT BW	205 ADJ
79	743
Off Test WT	205 RATIO
953	102
ADG	ADG RATIO
3.35	95
WDA	WDA RATIO
3.01	94
REA ADJ	FAT ADJ
12.7	0.3
IMF ADJ	ADJ YW
4.49	1125
PELVIC AREA	SCROTAL
155	35
PELVIC HEIGHT	PELVIC WIDTH
13	11
COG/POUND	COG 600LBS
0.8	498



Sleep at night with this calving ease sire. 743 WW with no creep.



LR CAESAR 526-21

Birth Date: 2/21/21 Bull 20199443 Tattoo: 526
Mark & Sheryl Leonard

Sire BYERGO BLACK MAGIC 3348
BYERGO TITUS 6340
BYERGO MISS ELIA 2834

Dam LR 526-017
LR CROWN ROYAL 416
LR 017-6085



CED	BW	WW	YW	CEM	MM	MWT	\$M	\$W	ADJ FG
0	4.5	68	125	6	25	0	55	54	6.3
\$F	\$G	\$B	\$C	\$EN	RIB ADJ	CWT	MARB	BF	REA
108	43	151	250	139.3	.11	57	3.12	0	0.9

ACT BW	205 ADJ
87	719
Off Test WT	205 RATIO
1234	94
ADG	ADG RATIO
3.28	93
WDA	WDA RATIO
3.21	100
REA ADJ	FAT ADJ
13.5	0.1
IMF ADJ	ADJ YW
3.12	1177
PELVIC AREA	SCROTAL
139.3	37
PELVIC HEIGHT	PELVIC WIDTH
12	12
COG/POUND	COG 600LBS
0.7	424



BYERGO TITUS 6340
SIRE OF LOT 119

An extreme performance bull sired by Titus and out of a Crown Royal daughter. His 125 YW EPD puts him in the top 20% of the breed for growth. If you sell feeders, his calves will weigh up and maximize your profit while making the buyer want to come back for your calves again. If you feed them yourself, you will appreciate the performance and lower cost of gain from the efficiency genetics he possesses.



LR GRANDEUR 999-21

Birth Date: 1/28/21 Bull 20202083 Tattoo: 999
Mark & Sheryl Leonard

Sire K C F BENNETT SOUTHSIDE
MEAD MAGNITUDE
MEAD PRIMROSE N198

Dam KG FOCAL POINT 8100
LR MISS SOFI 999-761
LR MISS 761-562



CED	BW	WW	YW	CEM	MM	MWT	\$M	\$W	ADJ FG
13	.1	72	132	13	30	NA	76	75	7.3
\$F	\$G	\$B	\$C	\$EN	RIB ADJ	CWT	MARB	BF	REA
98	47	145	264	215.9	NA	54	.49	13.7	.73

ACT BW	205 ADJ
72	710
Off Test WT	205 RATIO
1285	98
ADG	ADG RATIO
3.29	93
WDA	WDA RATIO
3.15	98
REA ADJ	FAT ADJ
14.6	0.5
IMF ADJ	ADJ YW
4.33	1217
PELVIC AREA	SCROTAL
158	33
PELVIC HEIGHT	PELVIC WIDTH
13.5	12.5
COG/POUND	COG 600LBS
0.8	490.6



MEAD MAGNITUDE
SIRE OF LOT 135

Born unassisted from a 1st calf heifer with only a 72 lb. birth weigh makes him a solid choice for breeding a set of heifers. You won't have to give up performance with his YW EPD of 135 and being in the top 10% of the breed for growth rate. Those are difficult combinations to get in an animal, but he does it. High maternal calving ease and milk tells you he'll produce a superb set of replacement females in addition to the grid topping cattle he'll produce for the feedlot.



RAASCH RENOWN 123

Birth Date: 3/16/21 Bull 20160336 Tattoo: R123
Raasch Performance Cattle • Dean Raasch

Sire RITO 707 OF IDEAL 3407 7075
SAV RENOWN 3439
SAV BLACKCAP MAY 4136

Dam S A V ANGUS VALLEY 1867
RAASCH EMBLYNETTE 3034
SAV EMBLYNETTE 5619



CED	BW	WW	YW	CEM	MM	MWT	\$M	\$W	ADJ FG
-4	4.3	86	152	2	16	111	44	66	6.4
\$F	\$G	\$B	\$C	\$EN	RIB ADJ	CWT	MARB	BF	REA
107	26	133	217	144	.31	66	3.45	0	0.8

ACT BW	205 ADJ
90	726
Off Test WT	205 RATIO
1275	112
ADG	ADG RATIO
3.55	101
WDA	WDA RATIO
3.53	110
REA ADJ	FAT ADJ
14.8	0.3
IMF ADJ	ADJ YW
3.45	1288
PELVIC AREA	SCROTAL
144	35.5
PELVIC HEIGHT	PELVIC WIDTH
13	11
COG/POUND	COG 600LBS
0.7	427.4



SAV RENOWN 3439
SIRE OF LOT 144

Sired by the popular Renown bull; lot 144 has the thickness, performance and a huge ribeye to sire cattle with a top end product.



RAASCH DOWNPOUR 120

Birth Date: 3/12/21 Bull 20160432 Tattoo: R120
Raasch Performance Cattle • Dean Raasch

Sire SAV RAINFALL 6846
SAV DOWNPOUR 8794
SAV MADAME PRIDE 4407

Dam B/R NEW FRONTIER 095
RAASCH PHANTASIA 3101
RF PHANTASIA 9006



CED	BW	WW	YW	CEM	MM	MWT	\$M	\$W	ADJ FG
0	4.8	81	148	10	20	141	31	59	6.4
\$F	\$G	\$B	\$C	\$EN	RIB ADJ	CWT	MARB	BF	REA
114	51	165	245	179.9	.29	64	.60	11	.69

ACT BW	205 ADJ
87	710
Off Test WT	205 RATIO
1194	110
ADG	ADG RATIO
3.7	105
WDA	WDA RATIO
3.27	102
REA ADJ	FAT ADJ
12.8	0.3
IMF ADJ	ADJ YW
4.74	1194
PELVIC AREA	SCROTAL
174	40
PELVIC HEIGHT	PELVIC WIDTH
14.5	12
COG/POUND	COG 600LBS
0.7	426.7



SAV DOWNPOUR 8794
SIRE OF LOT 145

A powerful bull with a big scrotal that has the look of a herd bull. His dam has extreme length and volume. As a 9 year old cow, she still has an udder like a 1st calf heifer. Look this bull up, you will like him.



DLR BRILLIANCE J870

Birth Date: 4/2/21 Bull 20148987 Tattoo: J870
DLR Farms • Dan & Leslie Rinner

Sire JINDRA BLACKOUT
JINDRA BRILLIANCE 479
JINDRA BLACKBIRD LASSY 7142

Dam JINDRA MEGAHIT
JINDRA BLACKBIRD J334 8170
JINDRA BLACKBIRD J 114 334



CED	BW	WW	YW	CEM	MM	MWT	\$M	\$W	ADJ FG
-7	5.3	78	136	6	20	103	33	59	6.6
\$F	\$G	\$B	\$C	\$EN	RIB ADJ	CWT	MARB	BF	REA
125	42	167	250	228.4	.21	67	.27	10.6	1.07

ACT BW	205 ADJ
83	819
Off Test WT	205 RATIO
1129	NA
ADG	ADG RATIO
3.53	100
WDA	WDA RATIO
3.28	102
REA ADJ	FAT ADJ
15.1	0.2
IMF ADJ	ADJ YW
3.15	1233
PELVIC AREA	SCROTAL
173.3	35
PELVIC HEIGHT	PELVIC WIDTH
14	12
COG/POUND	COG 600LBS
0.7	444.9

Lot 150 is a stout, thick made bull with plenty of eye appeal. He posted a solid 205-day weight and will sire calves that will push down hard on the scales in the fall. His dam is a docile, neatly made Megahit daughter with a good udder. Don't be concerned about the birth weight EPD on this bull. His calves will be long and smooth, made and born easily. Suitable for cows.



SWANSON ENHANCE 321-96

Birth Date: 2/24/21 Bull 20139654 Tattoo: 321
Swanson Angus Farms • Glen & Judy Swanson

Sire BAKERS NORTHSIDE 6007
SWANSON NORTHSIDE 6298-29
SYDGEN JUNE 6298



Dam SYDGEN EXCEED 3223
SWANSON BLACKCAP LADY 964186
SYDGEN BLACKCAP LADY 4186



CED	BW	WW	YW	CEM	MM	MWT	\$M	\$W	ADJ FG
4	1.6	52	102	14	23	42	60	50	5.8
\$F	\$G	\$B	\$C	\$EN	RIB ADJ	CWT	MARB	BF	REA
92	78	170	280	164	.29	42	4.81	0	0.3

ACT BW	205 ADJ
82	745
Off Test WT	205 RATIO
1256	93
ADG	ADG RATIO
3.46	98
WDA	WDA RATIO
3.3	103
REA ADJ	FAT ADJ
12.8	0.3
IMF ADJ	ADJ YW
4.81	1227
PELVIC AREA	SCROTAL
164	37.5
PELVIC HEIGHT	PELVIC WIDTH
14	12
COG/POUND	COG 600LBS
0.6	386.4

A solid numbered bull who has eye appeal and structure to make any herd happy.

Lytton Farm Equipment

Your source for new and rebuilt feed mixers!



We pride ourselves in being your "one stop" supplier of Truck Mounted, Trailer Mounted and Stationary Feed Mixers. We also feature bale handling equipment, part sales, and repair facilities for all of your needs.

We invite you to visit us today!

Phone: 712-466-2211
Mike Penniman: 712-830-0440

200 2nd and Main • P.O. Box 200 • Lytton, IA 50561

Fax: 712-466-2625 • www.lyttonfarmequipment.com



Accredited by the Better Business Bureau since 2003

159

WTR Z63 POWERBALL 128

Birth Date: 1/19/21 Bull 20024300 Tattoo: 128
Willer Timber Ridge • Ted Willer

Sire

PA POWER TOOL 9108
RAVEN POWERBALL 53
RAVEN EMMA E 4241



Dam

RUTH SS Z63

SYDGEN MANDATE 6079
RUTH SS R1



CED	BW	WW	YW	CEM	MM	MWT	\$M	\$W	ADJ FG
7	1.6	62	109	8	22	73	52	59	5.9
\$F	\$G	\$B	\$C	\$EN	RIB ADJ	CWT	MARB	BF	REA
76	79	155	253	136.5	.35	38	5.7	0	0.5

ACT BW	205 ADJ
83	570
Off Test WT	205 RATIO
1303	95
ADG	ADG RATIO
4.06	115
WDA	WDA RATIO
3.12	98
REA ADJ	FAT ADJ
12	0.4
IMF ADJ	ADJ YW
5.7	1151
PELVIC AREA	SCROTAL
136.5	40
PELVIC HEIGHT	PELVIC WIDTH
11.5	13
COG/POUND	COG 600LBS
0.7	394.5

Want to add POUNDS on LESS FEED and GAIN well? This bull was #8 for Feed Efficiency at 5.87 lbs. ADJ F:G—a 14% cost advantage and #7 on test for ADG at 4.10 lbs./day which is a 17% more beef at less cost! He also came in #4 on test for ADJ %IMF at 5.50% (ratio 120 and MB EPD 1.30 in the top 3% and \$G 80 in the top 2%. He is in the top 25% \$B and top 35% \$C of the breed. He was also the #3 bull off test at 1,303 lbs. This very BALANCED bull brings you a big scrotal, a very smooth shoulder and correct stride with feet scores at ANG 5 and CLW 6.

4-WR 110; YR 123; %IMF ratio 119; RE ratio 101 (not incl this bull). Cow's own performance WR 109; YR 112; %IMF ratio 119; and RE ratio 103. A full flush sister to Lot 159 was our #1 YW yearling heifer out of a contemporary group of 32 at 1,020 lbs...her ultrasound was just submitted 3/28 and was "expected high for both MB and RE." Z63 sold to Wall Street Cattle Co. (MO) in 2021 for \$10,000. More info on our website at wtrangus.com.



Ruth S S Z63
Registration # 17287397

RUTH SS Z63
DAM OF LOT 159

160

WTR 714 S CAVALRY 135

Birth Date: 1/22/21 Bull 20024070 Tattoo: 135
Willer Timber Ridge • Ted Willer

Sire

CONNEALY CAVALRY 1149
BRUSETT FOREVER W857



Dam

M A R MIDLAND EMPIRE 3092
WTR EMPIRE-5054 NELLIE 714
MAR NELLIE 5054



CED	BW	WW	YW	CEM	MM	MWT	\$M	\$W	ADJ FG
9	2	66	111	13	18	73	53	58	4.7
\$F	\$G	\$B	\$C	\$EN	RIB ADJ	CWT	MARB	BF	REA
95	56	151	249	169	.42	53	3.82	0	0.7

ACT BW	205 ADJ
100	624
Off Test WT	205 RATIO
1376	103
ADG	ADG RATIO
4.14	117
WDA	WDA RATIO
3.32	104
REA ADJ	FAT ADJ
12.6	0.5
IMF ADJ	ADJ YW
3.82	1245
PELVIC AREA	SCROTAL
169	38
PELVIC HEIGHT	PELVIC WIDTH
14.5	12.5
COG/POUND	COG 600LBS
0.5	317.9

This bull has done it all! #1 in feed efficiency, #2 off test at 1,376 lbs. and #6 for ADG at 4.18 lbs./day—a 20% more gain! He sports a 3.63% ADG %IMF and a 12.6" ADJ RE. This bull is long and deep with extra rib expression with a good stride. Good top and heart girth, wide chested. Feet scores of 6 for both ANG and CLW. Don't miss this real POWER BULL when pounds pay.

Dam progeny: 8-WR 108, YR 109, %IMF 108, RER 104. Cow's own performance WR 101, YR 111, %IMF 107 and RE 118. Dam was a donor at WTR with lots of power and style—excellent feet/legs and udder attachment/teat size. More info on our website at wtrangus.com.



JVC CAVALRY V 3326
SIRE OF LOT 160



NRCC ARSENAL 149

Birth Date: 4/9/21 Bull 20169088 Tattoo: 149
North River Cattle Co. • Dan Hanrahan

Sire

BARTELS ARSENAL 4063 602
ELMAY EXEC 2005 6537 BARTELS

Dam

SITZ UPWARD 307R
MOGCK BLACK LASS 890
MOGCK BLACK LASS 787



CED	BW	WW	YW	CEM	MM	MWT	\$M	\$W	ADJ FG
5	3	79	138	5	32	64	62	87	6
\$F	\$G	\$B	\$C	\$EN	RIB ADJ	CWT	MARB	BF	REA
99	39	138	241	182	.36	63	3.15	0	0.8

ACT BW	205 ADJ
89	793
Off Test WT	205 RATIO
1262	111
ADG	ADG RATIO
4.02	114
WDA	WDA RATIO
3.74	117
REA ADJ	FAT ADJ
12.7	0.3
IMF ADJ	ADJ YW
3.15	1379
PELVIC AREA	SCROTAL
182	36.5
PELVIC HEIGHT	PELVIC WIDTH
14	12.5
COG/POUND	COG 600LBS
0.7	401.2

This Bartels Arsenal 838 bull is in the top 10% growth EPDs and has a 111 weaning ratio. His good uddered dam was one of our selections from a 2017 Mogck and Sons Angus Sale. There she raised \$9,500 and \$9,000 maternal brothers to Lot 172. 890 had a lifetime weaning ratio of 10 @ 104.



NRCC MVP 106

Birth Date: 3/3/21 Bull 20172733 Tattoo: 106
North River Cattle Co. • Dan Hanrahan

Sire

B/R MVP 5247
BASIN PAYWEIGHT 1682
B/R BLOSSOM 3254

Dam

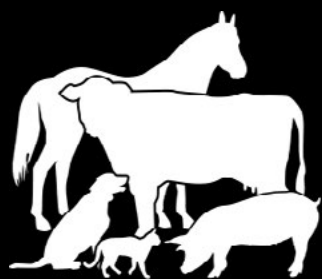
R&D ROSEANNE 201
HOOVER FRICTION H484
BRADS ROSEANNE 3065



CED	BW	WW	YW	CEM	MM	MWT	\$M	\$W	ADJ FG
8	1.9	72	130	16	35	75	73	83	5.8
\$F	\$G	\$B	\$C	\$EN	RIB ADJ	CWT	MARB	BF	REA
105	43	148	265	153.8	.28	63	3.23	0	0.7

ACT BW	205 ADJ
0	734
Off Test WT	205 RATIO
1399	103
ADG	ADG RATIO
4.25	121
WDA	WDA RATIO
3.74	117
REA ADJ	FAT ADJ
12.5	0.3
IMF ADJ	ADJ YW
3.23	1367
PELVIC AREA	SCROTAL
153.8	39
PELVIC HEIGHT	PELVIC WIDTH
13	12
COG/POUND	COG 600LBS
0.6	389.8

This B/R MVP 5247 son is in the top 1% of the breed for heifer pregnancy and the top 10% for calving ease maternal. He had a weaning ratio of 103 at the farm, and his good uddered dam has a calving interval of eight calves at 361 days.



AMVC
VETERINARY SERVICES

Contact us at one of our locations:

Audubon: 712.563.4201

Manning: 712.653.9460

Templeton: 712.699.3712

cattlerepro@amvcms.com

Embryo Transfer • IVF • A.I. Strategies
Ultrasound • Herd Health Consultations



www.amvcms.com

Spring Yearling SimAngus Bulls

SYMBOL OF EXCELLENCE

162

BFA TRUE BLUE 123J

Birth Date: 3/30/21 Bull 3969555 Tattoo: 123J
Boggess Family Angus • Boggess Family Angus

Sire **GEFF COUNTY O**

W/C LOADED UP 1119Y
RUBY NFF RHYTHM 475B

Dam **W606**

SimGenetics
PROFIT THROUGH SCIENCE
American Simmental Association

CE	BW	WW	YW	MCE	MILK	MWW	STAY	API	ADJ FG
7.8	1.6	72.8	115.4	4.5	23.0	59.4	11.4	107.7	6.9
TI	CW	MARB	BF	REA					
71.1	27.4	0.2	0.2	0.5					

ACT BW	205 ADJ
84	NA
Off Test WT	205 RATIO
1262	NA
ADG	ADG RATIO
2.97	110
WDA	WDA RATIO
3.34	110
IMF ADJ	ADJ YW
2.78	1221
PELVIC AREA	SCROTAL
146.8	34.0
PELVIC HEIGHT	PELVIC WIDTH
12.5	12.0
COG/POUND	COG 600LBS
0.8	465.0



GEFF COUNTY O
SIRE OF LOT 162

165

BFA LOVER 20J

Birth Date: 3/20/21 Bull 3969552 Tattoo: 20J
Boggess Family Angus • Boggess Family Angus

Sire **THSF LOVER BOY B33**

HTP/SVF DURACELL T52
RP/MP RIGHT TO LOVE 015U

Dam **SANDEEN DONNA 8531**

W/C EXXCUTIVE ORDER 854313
DONNA 73T

SimGenetics
PROFIT THROUGH SCIENCE
American Simmental Association

CE	BW	WW	YW	MCE	MILK	MWW	STAY	API	ADJ FG
11.1	0.3	83.1	120.7	4.2	25.2	66.7	13.6	126.9	7.2
TI	CW	MARB	BF	REA					
82.0	22.6	0.3	0.2	0.8					

ACT BW	205 ADJ
78	NA
Off Test WT	205 RATIO
1145	NA
ADG	ADG RATIO
2.65	98
WDA	WDA RATIO
2.93	97
IMF ADJ	ADJ YW
3.13	1114
PELVIC AREA	SCROTAL
168.5	38.5
PELVIC HEIGHT	PELVIC WIDTH
14.0	12.5
COG/POUND	COG 600LBS
0.8	483.2



THSF LOVER BOY B33
SIRE OF LOT 165

Lot 165 has been a looker since birth with extra middle and growth. Sired by Loverboy, one of the top AI Simmental bulls in the U.S. with CE. On the dam side, he stemmed from the strong maternal Donna family.

Yearling Simmental Bulls

SYMBOL OF EXCELLENCE

168

HL FAT BUTT J73

Birth Date: 4/14/21 Bull 3962232 Tattoo: J108
Heartland Simmentals • Kirk Lynch

Sire MR CCF 20-20
WMCC MAYHEM 810F
PZC/EBABROOKES BRILLIANCE

Dam LFE BLACK LAKOTA 385W
OLF LADY LAKOTA Z114
OLF MISS OLIE U2

CE	BW	WW	YW	MCE	MILK	MWW	STAY	API	ADJ FG
12.9	2.0	86.0	128.5	4.8	16.3	59.3	15.4	128.6	7.1
TI	CW	MARB	BF	REA					
79.8	36.4	0.0	-0.1	1.1					

ACT BW	205 ADJ
80	837
Off Test WT	205 RATIO
1086	104
ADG	ADG RATIO
3.32	108
WDA	WDA RATIO
3.27	106
IMF ADJ	ADJ YW
2.94	1186
PELVIC AREA	SCROTAL
169.3	35.5
PELVIC HEIGHT	PELVIC WIDTH
14.0	11.5
COG/POUND	COG 600LBS
0.8	476.4

A sharp looking bull with a high growth number and a high API of 128.



WMCC MAYHEM 810F
SIRE OF LOT 168

170

WS 131YJ

Birth Date: 3/5/21 Bull 3935203 Tattoo: 131YJ
Wolfe Simmentals • Bill Wolfe

Sire SVF ALLEGIANCE Y802
WS MO-HAWK 44PYD
WS 44MPY

Dam TRIPLE C BETTIS S72J
WS 131LY
WS G131L

CE	BW	WW	YW	MCE	MILK	MWW	STAY	API	ADJ FG
11.9	0.3	80.5	125.7	6.8	27.1	67.3	15.6	122.0	7.2
TI	CW	MARB	BF	REA					
76.2	42.2	-0.1	-0.1	1.0					

ACT BW	205 ADJ
93	722
Off Test WT	205 RATIO
1199	115
ADG	ADG RATIO
3.03	99
WDA	WDA RATIO
3.22	105
IMF ADJ	ADJ YW
2.94	1178
PELVIC AREA	SCROTAL
160.3	32.5
PELVIC HEIGHT	PELVIC WIDTH
13.5	12.0
COG/POUND	COG 600LBS
0.8	481.2

His dam has a calving interval of 365 days and an average WW ratio of 101 on nine calves. He has a black blazed face. Tested homozygous black by GeneSeek.



171

WS 2ACJ

Birth Date: 3/7/21 Bull 3935178 Tattoo: 2ACJ
Wolfe Simmentals • Bill Wolfe

Sire ASR/GLS PACESETTER U862
ASR LONGEVITY Y184
ASR MISS PRIMROSE M231

Dam SAND RANCH HAND
WS 2SAC
WS 2MPSA

CE	BW	WW	YW	MCE	MILK	MWW	STAY	API	ADJ FG
11	1.2	74.8	116.9	9.8	20.2	57.6	17.8	126.8	6.9
TI	CW	MARB	BF	REA					
73.7	33.8	0.0	-0.1	1.2					

ACT BW	205 ADJ
87	662
Off Test WT	205 RATIO
1195	106
ADG	ADG RATIO
3.34	109
WDA	WDA RATIO
3.23	105
IMF ADJ	ADJ YW
2.78	1180
PELVIC AREA	SCROTAL
155.0	34.0
PELVIC HEIGHT	PELVIC WIDTH
12.5	12.5
COG/POUND	COG 600LBS
0.8	462.3

His dam has a calving interval of 362 days and an average WW ratio of 105 on five calves. He has a black blazed face. Tested homozygous black by GeneSeek.



LONGEVITY
SIRE OF LOT 171

Call us for all your county
& ICA apparel needs

MUIR EMBROIDERY



124 N. Wilson St. • Jefferson, IA
Todd & Roxanne Muir • Ian & Bridget Johnson
Tyler, Natasha, Kenzie & Cody Muir

515-386-4196 • muirembroidery@netins.net

Custom Embroidery and Screen Printing

- Caps
- Jackets
- Pullovers
- Shirts
- Vests
- Custom Sunglasses
- Gloves
- Custom Sunglasses
- Director Chairs
- Awards
- Safety Wear
- Footwear & Overshoes
- Rain Wear
- Trophies
- Promotional Products
- & much more!

We have over 20,000 computer stock designs or call and ask for an estimate on custom design logos.

We will help you with colors, size, etc. to make your embroidery have the look you want!

Representing these and other quality manufacturers:



NOTES:



Join the herd

WE CAN'T WAIT FOR YOU TO JOIN US!

The Iowa Cattlemen's Association is the only grassroots cattle organization in the state providing producers with assistance to support their legacy.

TO JOIN NOW VISIT: **WWW.IACATTLEMEN.ORG**

CATALOG DESIGN BY:
KIM TIBKEN GRAPHIC DESIGN
(712) 309-6595 | KIMTIBKEN@GMAIL.COM

★ ★ ★ ★ ★
IOWA CATTLEMEN'S
ASSOCIATION



Symbol of
EXCELLENCE
PERFORMANCE BULL SALE

APRIL 22, 2022
HUMESTON LIVESTOCK AUCTION
6:30 P.M.