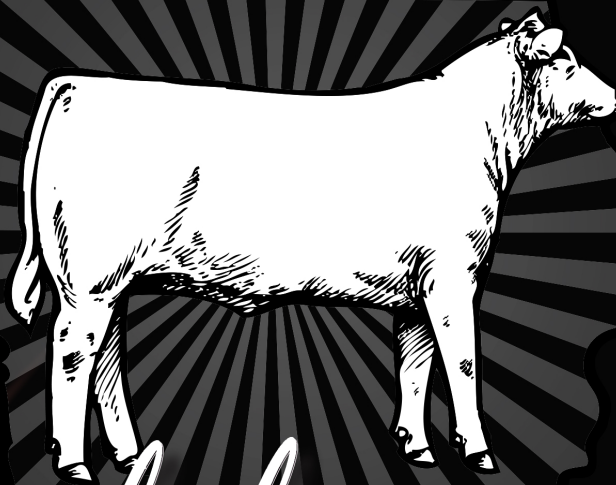


★ ★ ★ ★ ★
IOWA CATTLEMEN'S
ASSOCIATION



Symbol of
EXCELLENCE

PERFORMANCE BULL SALE

40th Anniversary

MONDAY, MARCH 24, 2025
TAMA LIVESTOCK AUCTION
6:30 P.M.

Welcome

For 40 years, the Iowa Cattlemen's Association (ICA) has provided third-party verified performance bulls through our 'Symbol of Excellence' Performance Bull Sales. Annually, we invite seedstock producers from across Iowa and beyond, to test their best genetics against one another. In the end, bulls that make the consignment sale at Tama must express their potential to sire calves that will tip the scales at weaning and excel on the rail.

With that said, ICA takes pride in offering the best cattle to producers in our great state and others across the country. We hope you can take comfort in knowing that we have started the selection process for you at our sales, as we offer 'Excellence' in this year's consignment sale. In addition to being registered with a breed association, ICA's 'Symbol of Excellence' bulls must surpass the muster of the following qualifications during and after the commercial grow yard testing period.

- Minimum 1,100-pound adjusted yearling weight.
- Minimum 11.5-square inch ultrasound yearling ribeye area measurement.
- Must pass a breeding soundness exam with a minimum 32-centimeter scrotal circumference measurement.
- Must rank in the upper 90% of all bulls indexed.

Yes, comparative analysis is tangible and easy to point out in development facilities. However, we strive to balance performance data during the testing windows with even more important bull potency and longevity economic factors. After all, purchasing bulls is an investment, and at the end of the day, if that investment is not expressed through a higher-performing calf crop, then how good of an investment have you made?

The group of bulls being offered at the Tama 'Symbol of Excellence' sale were required to have a minimum 2.5 pounds per day on test. More importantly, these bulls are ready for the roughest of terrains for the spring/summer breeding seasons—both structurally and reproductively.

Each individual has been put through one of the most meticulous performance testing programs in the country. These bulls have been or will be selected to participate in these sales on structure and reproductive soundness, and have had to excel in all performance categories. Your purchase will be backed by data and will help to ensure that your next calf crop will rattle the scales at weaning and/or perform in the feedyard and on the rail for increased profitability.

If you have received this catalog in advance of the sale, videos of each bull are available on the ICA website (www.iacattlemen.org). There will also be an online auction option. Details will be available on the Bull Evaluation Program page on the ICA website.

Thank you for your continued support, trust, and belief in the consignor group and your Iowa Cattlemen's Association!

Sincerely,

Cody Jimmerson

Iowa Cattlemen's Association



Sale Information

Sale Location:

Tama Livestock Auction - 1908 E 5th St. Tama, IA 52339

Sale Representatives:

Iowa Cattlemen's Association, Cody Jimmerson..... (515) 971-3127
Iowa Cattlemen's Association, Byran Whaley..... (515) 689-4929
American Cattleman, Austin Sorensen..... (712) 310-3788
Midwest Marketer, Austin Brandt..... (712) 621-1829
Tama Livestock Auction, Jason Lakin..... (641) 751-4227
LiveAuctions.TV, Mariah Miller..... (712) 294-4731

Auctioneer: Jason Lakin (641) 751-4227

Sale Day Information:

Bids may be accepted by sale representatives.

Sale Day Phone (515) 971-3127 or (515) 689-4929

A final sale order and supplement sheet will be available on sale day.

Sale Terms:

All cattle sold at the ICA 'Symbol of Excellence' sales in Tama will sell under the terms of their respective breed associations.

Testing Facility Information:

Kirkwood Community College Testing Facility,
Bubba Chapman (319) 329-5904

Sale Information Website:

To view the online catalog and videos visit: <https://bit.ly/3wvWoPc>

At Tama

5 Fall Senior Yearlings

17 Angus Spring Yearlings

5 Simmental Spring Yearlings

Sale Videos:

To view consignment videos visit: <https://bit.ly/3Fd5qot>

Livestock Insurance:

Available through our Jeanne Conover following your purchase of sale consignments. Liberty Mutual - Jeanne Conover (515) 491-1335

Internet Bidding: <https://bit.ly/4bc2epI>

LiveAuctionsTV_{2.0}

EPD Profiles:

Catalog EPD profiles were generated on Feb. 10, 2025.

Purchase Delivery:

Iowa Cattlemen's Association will assist in providing reliable and affordable trucking following purchases of cattle.

The cafe will be open.

Consignors

ARENS CATTLE COMPANY

Dan & Nate Arens
1321 79th St. Trail
Belle Plaine, IA 52208
(319) 350-0114
danarens11@gmail.com

HARDER ANGUS

Terry Harder
27184 Thunder Rd.
Holy Cross, Iowa 52053
(563) 590-5934
tharder@bankfidelity.com

SCHAEFER ANGUS

Craig Schaefer
7524 Independence Ave.
Waterloo, Iowa 50703
(319) 215-2708
schaeferangus@gmail.com

SUMMIT FARMS

Roy Miller
10640 Co Hwy. D20
Alden, IA 50006
(641) 373-6031
rmiller@summitag.com

CT + 3 FARMS

Cevin & Tonya Logsdon
24732 240th Ave.
Centerville, Iowa 52544
(641) 895-9540
tlogsdon.seymour@gmail.com

INDIAN HILLS COMMUNITY COLLEGE

Brydon Kaster
721 N First St.
Centerville, IA 52544
(641) 895-4461
brydon.kaster@indianhills.edu

SCHROEDER ANGUS

Doug Schroeder
971 Rose Ave.
Clarence, IA 52216
(563) 357-4044
schroederangus@msn.com

VAJGRT CATTLE CO.

Michael & Taylor Vajgrt
6582 23rd Ave.
Vinton, Iowa 52208
(319) 504-3037
vajgrtcattleco@gmail.com

FOSTER ANGUS

Craig Foster
24932 580th St.
Exline, IA 52555
(641) 895-4823
cfosterangus@gmail.com

R & C ANGUS

Ruhl & Cheryl Barker
18269 Military Rd., PO Box 110
Monticello, IA 52310
(319) 465-5058
rcbarker12@gmail.com

SPENCER'S GROVE FARMS

Larry Bridgewater
4717 Spencer's Grove Rd.
Walker, IA 52352
(319) 560-9378
lbridg1457@windstream.net

WOLFE SIMMENTALS

Bill & Jane Wolfe
13908 50th Ave.
Prole, Iowa 50229
(515) 681-5699
bjwolfe@myomnitel.com

Symbol of Excellence Sale Order

TAG	BREED	PRICE	DESCRIPTION
12	Angus		High Indexing Overall and Angus
39	Purebred Simmental		High Indexing Simmental
41	Purebred Simmental		
45	5/8 Simmental		
18	Angus		
2	Angus		
30	Angus		
31	Angus		
43	Purebred Simmental		
4	Angus		
20	Angus		
14	Angus		
26	Angus		
13	Angus		
47	Angus		
16	Angus		
33	Angus		
36	Angus		
23	Angus		
35	Angus		
3	Angus		
1	Angus		
28	Angus		
25	Angus		
21	Angus		
6	Angus		
24	Angus		
15	Angus		

Fall Yearling Angus Bulls

SYMBOL OF EXCELLENCE

1

R&C PRASIL AMERICA 2399

Birth Date: 10/11/23 Bull 21085325 Tattoo: 2399

R&C Angus • Ruhl & Cheryl Barker

Sire VOSS FOUNDATION 0047
VOSS EMBLYNETTE 4517

ANGUS GS

Dam GRANGER GREAT FALLS 053
R&C BLACKBIRD LB D751
R&C BLACKBIRD LB 751T

ACT BW	205 ADJ
78	829
Off Test WT 205 RATIO	
1579	100
ADG	ADG RATIO
4.29	84
WDA	WDA RATIO
3.26	99
REA ADJ	FAT
12	0.2
IMF	ADJ YW
2.84	1246
IMF ADJ	SCROTAL
-0.68	9

CED	BW	WW	YW	CEM	MARB	BF	REA
4	2.7	70	124	49	0.44	0.07	0.25
\$F	\$G	\$B	\$M	\$EN	\$C	\$W	
85	34	119	19	-48	173	63	

BW 78 lbs., Adj WW 829 lbs., Adj YW 1237 lbs. Dam's Production BW 1@100, WW 1@100, YW 1@100

Take notice, a great way to start off the catalog. Outstanding October bull out of Voss Foundation 0047, a standout son of SAV America 8018 that was a sale feature of the 2021 Voss Production Sale. This bull has been a standout since birth, weighing in at 78 lbs., and turning on the gas as a high growth bull with his 829 lb. Adj. WW. His dam is backed by Midland Bull Test sensations, Granger Great Falls and BR Midland. If you sell feeder calves by the pound, this is your bull.



VOSS FOUNDATION 0047
SIRE OF LOT 1

"We are proud to celebrate our 40th anniversary of what is today the Symbol of Excellence bull sales. This is a great opportunity for our industry to showcase proven genetics and to continue to elevate the bar for Iowa cattle producers. For producers, this sale offers peace of mind knowing that the bulls being marketed have been through and meet the requirements of one of the most rigorous performance tests in the state."

- Cody Jimmerson, ICA SW member services advisor and program coordinator.

2

L B GROWTH FUND 375

Birth Date: 10/5/23 Bull 20969599 Tattoo: 375

Spencer's Grove Farms • Larry Bridgewater

Sire BILLVOS GROWTH FUND B30
RB RITA TOUR 115-537

ANGUS GS

Dam WPAF 97 BOUNCER 291-43
G C BLACKBIRD EXTRA 838
G C BLACKBIRD EXTRA 318

ACT BW	205 ADJ
75	615
Off Test WT 205 RATIO	
1623	98
ADG	ADG RATIO
5.59	126
WDA	WDA RATIO
4.88	100
REA ADJ	FAT
12.4	0.25
IMF	ADJ YW
4.49	1265
IMF ADJ	SCROTAL
1.22	40

CED	BW	WW	YW	CEM	MARB	BF	REA
2	2.9	76	132	64	0.41	0.002	0.76
\$F	\$G	\$B	\$M	\$EN	\$C	\$W	
108	46	154	49	-41	249	66	

Another one our Growth Fund bulls who hit the ground running and was the top-gaining bull. This aged bull had an off test ADG of 4.88.



DEER VALLEY GROWTH FUND
GRAND SIRE OF LOTS 2 & 3

3

L B GROWTH FUND 376

Birth Date: 10/15/23 Bull 20969600 Tattoo: 376

Spencer's Grove Farms • Larry Bridgewater

Sire BILLVOS GROWTH FUND B30
RB RITA TOUR 115-537

ANGUS GS

Dam SYDGEN C C & 7
G C MISS MCCUMBER 017
G C MISS MCCUMBER 340

ACT BW	205 ADJ
77	670
Off Test WT 205 RATIO	
1416	107
ADG	ADG RATIO
4.98	79
WDA	WDA RATIO
3.05	89
REA ADJ	FAT
11.9	0.19
IMF	ADJ YW
4.09	1148
IMF ADJ	SCROTAL
0.76	39

CED	BW	WW	YW	CEM	MARB	BF	REA
4	2.3	74	124	59	0.29	0.013	0.07
\$F	\$G	\$B	\$M	\$EN	\$C	\$W	
109	38	17	60	-29	251	68	

A Growth Fund bull is one of our favorites and docile with great growth and muscle. He has strong maternal traits. A bull that would work well on heifers.

Fall Yearling Angus Bulls

SYMBOL OF EXCELLENCE

4

IHCC WARRIOR 3730

Birth Date: 9/24/23 Bull 21072032 Tattoo: 3165

Indian Hills Community College • Brydon Kaster

ACT BW	205 ADJ
75	768
Off Test WT 205 RATIO	
1550	91
ADG	ADG RATIO
2.78	132
WDA	WDA RATIO
5.12	93
REA ADJ	FAT
12.2	0.18
IMF	ADJ YW
4.02	1243
IMF ADJ	SCROTAL
0.67	38

Sire GAR DISCOVERY 6737H
E & B WILDCAT 9402
E&B LADY PLUS 643
ANGUS GS
S A V PRESIDENT 6847
Dam IHCC WARRIOR 1655
IHCC 655

CED	BW	WW	YW	CEM	MARB	BF	REA
9	2.6	90	158	7	.52	-.026	.95
\$F	\$G	\$B	\$M	\$EN	\$C	\$W	
116	53	169	45	-46	264	71	

This Wildcat son will bring good spread and calving ease. His genetics trace back to the Werner Family Angus lines and have been improved through an AI-only program facilitated by IHCC Ag students since 2012.



E & B WILDCAT 9402
SIRE OF LOT 4

6

SA BLOCKADE L124

Birth Date: 9/15/23 Bull 20957012 Tattoo: L124

Schroeder Angus • Doug Schroeder

ACT BW	205 ADJ
83	
Off Test WT 205 RATIO	
1586	
ADG	ADG RATIO
5.54	94
WDA	WDA RATIO
3.65	94
REA ADJ	FAT
12.2	0.13
IMF	ADJ YW
2.38	1211
IMF ADJ	SCROTAL
-1.21	40

Sire 4M BLOCKADE 120
SITZ BARRICADE 632F
EF EVERELDA ENTENSE 2421
ANGUS GS
KOUPLS B&B IDENTITY
Dam WK LADY MAY 2347
THOENE TRAVELER 004-563

CED	BW	WW	YW	CEM	MARB	BF	REA
14	-0.1	60	110	57	0.52	0.029	0.61
\$F	\$G	\$B	\$M	\$EN	\$C	\$W	
107	45	152	66	-5	263	62	

Powerfully constructed, calving ease option from the KR Lady May donor. Wide based, bold ribbed, big topped age advantage sire. Full sib yearling sells at lot 47.



Thank You!

The Iowa Cattlemen's Association thanks Boehringer Ingelheim for their continued support and dedication to the ICA Bull Evaluation Program.

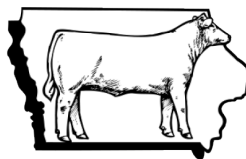
We appreciate their partnership and support of the Iowa cattle industry.

- Iowa Cattlemen's Association



**Boehringer
Ingelheim**

Proud supporter of the Bull Evaluation Program



IOWA CATTLEMEN'S ASSOCIATION

YOUR FUTURE IS OUR MISSION.

Renew Today!

www.iacattlemen.org

Yearling Angus Bulls

12

R&C GROWTH FUND 4560

Birth Date: 2/16/24 Bull 21112365 Tattoo: 4560

R&C Angus • Ruhl & Cheryl Barker

Sire DEER VALLEY GROWTH FUND
DEER VALLEY RITA 36113

ANGUS GS
Powered by Nogen GenCoast

Dam PVF INSIGHT 0129
R&C LB BLACKCAP GAL 5602
JOHNSON BLACKCAP LADY

ACT BW	205 ADJ
86	811
Off Test WT 205 RATIO	
1448	117
ADG	ADG RATIO
4.74	116
WDA	WDA RATIO
3.85	100
REA ADJ	FAT
14.3	0.32
IMF	ADJ YW
3.58	1459
IMF ADJ	SCROTAL
0.33	40

CED	BW	WW	YW	CEM	MARB	BF	REA
2	3.9	90	161	90	0.21	0.025	0.96
\$F	\$G	\$B	\$M	\$EN	\$C	\$W	
144	35	179	51	-41	283	69	

BW 86 lbs., WW 880 lbs., Adj YW 1495 lbs. Dam's Production: BW 8/104, WW 8/107, %IMF 4/103, Ribeye 4/115, Rib Fat 4/102. Calving Interval 355 days with eight calves. PATHFINDER DAM

High quality Growth Fund son by our Blackcap donor. This mating is consistent and complete in type and build. This guy has the ability to transmit pounds onto a set of calves in a hurry. He will impress those who sell cattle by the pound (WW 90, YW 161). Dam is a 10 year old powerhouse with great feet and udder. Brothers have sold to Rob Mitchell, Fairfield, IA and Steve Dolch, Villisca, IA.

13

R&C GROWTH FUND 4857

Birth Date: 2/21/24 Bull 21112335 Tattoo: 4857

R&C Angus • Ruhl & Cheryl Barker

Sire BASIN PAYWEIGHT 1682
DEER VALLEY GROWTH FUND
DEER VALLEY RITA 36113

ANGUS GS
Powered by Nogen GenCoast

Dam DAMERON BEST IN CLASS
R&C LADY BLACKBIRD 857U-8579
R&C BELLA 857U

ACT BW	205 ADJ
74	775
Off Test WT 205 RATIO	
1258	112
ADG	ADG RATIO
3.67	87
WDA	WDA RATIO
3.58	88
REA ADJ	FAT
12.5	0.42
IMF	ADJ YW
3.75	1285
IMF ADJ	SCROTAL
0.61	40

CED	BW	WW	YW	CEM	MARB	BF	REA
1	2.2	90	156	81	0.66	0.096	0.36
\$F	\$G	\$B	\$M	\$EN	\$C	\$W	
130	44	174	51	-40	277	77	

BW 74 lbs. WW 830 lbs. Adj. YW 1295 lbs. Dam's Production: BW 4/89, WW 4/104, %IMF 1/106, Ribeye 1/100, Rib Fat 1/104. Calving Interval 353 days with four calves.

Another high quality Growth Fund son which will add pounds to his sons (WW 90, YW 156). This moderate birth weight son hits you hard phenotypically and has an acceptable EPD of 2.3 and actual birth weight of 74 lbs. which can be used on larger heifers. Study his pedigree and growth numbers for raising those highly sought after, market topping feeders that generate dollars on sale day. His dam is a wonderful producing female with a perfect udder and great feet and legs.

14

CFS MAGNUM S445

Birth Date: 2/19/24 Bull 21056640 Tattoo: S445

Schaefer Angus • Craig Schaefer

Sire SAV MAGNUM 1335
MEAD MAGNITUDE
SAV EMBLYNETTE 9023

ANGUS GS
Powered by Nogen GenCoast

Dam CONNEALY CAPITALIST 028
DEPPE 028 PRIDE 559
GRANGER PRIDE 275

ACT BW	205 ADJ
80	783
Off Test WT 205 RATIO	
1254	109
ADG	ADG RATIO
2.85	95
WDA	WDA RATIO
3.44	87
REA ADJ	FAT
12.9	0.35
IMF	ADJ YW
4.21	1274
IMF ADJ	SCROTAL
1.34	40

CED	BW	WW	YW	CEM	MARB	BF	REA
3	2.8	81	143	57	0.49	0.004	0.74
\$F	\$G	\$B	\$M	\$EN	\$C	\$W	
102	47	149	67	-31	260	68	

Magnum is a well-balanced, curve bending, calving ease sire. Progeny are thick and fast performing with maternal value. This calf is in the top 15% WW and YW EPDs. Dam has a nursing ratio of 104 on three calves.

16

CFS PRESIDENT S413

Birth Date: 2/25/24 Bull 21056638 Tattoo: S413

Schaefer Angus • Craig Schaefer

Sire COLEMAN CHARLO 0256
SAV PRESIDENT 6847
SAV BLACKCAP MAY 4136

ANGUS GS
Powered by Nogen GenCoast

Dam SAV DON PEPE 4443
SSA ERALINE S612
ONEILLS ERALINE 284

ACT BW	205 ADJ
86	722
Off Test WT 205 RATIO	
1179	101
ADG	ADG RATIO
1.59	105
WDA	WDA RATIO
3.10	83
REA ADJ	FAT
11.5	0.26
IMF	ADJ YW
2.82	1216
IMF ADJ	SCROTAL
-0.89	40

CED	BW	WW	YW	CEM	MARB	BF	REA
-3	5.1	73	130	44	0.12	-0.03	0.82
\$F	\$G	\$B	\$M	\$EN	\$C	\$W	
9	33	126	45	-28	208	46	

President is powerful, long, thick and heavy muscled with excellent disposition. This calf has exceptional bone and should add weaning weight to your calf crop. Dam has a nursing ratio of 105 on five calves.

Online Bidding Available at:

LiveAuctions.TV

Yearling Angus Bulls

18

L B CRAFTSMAN 403

Birth Date: 1/15/24 Bull 21057846 Tattoo: 403

Spencer's Grove Farms • Larry Bridgewater

Sire CONNEALY CRAFTSMAN
SITZ RESILIENT 10208
BLACK CATHY OF CONANGA 8521

ANGUS GS
Powered by Nogen GenCo

Dam G C BESSIE 714

HOOVER NO DOUBT

G C BESSIE 850

ACT BW	205 ADJ
78	637
Off Test WT 205 RATIO	
1260	98
ADG	ADG RATIO
4.11	128
WDA	WDA RATIO
2.68	80
REA ADJ	FAT
12.0	0.22
IMF	ADJ YW
4.46	1173
IMF ADJ	SCROTAL
1.74	39

CED	BW	WW	YW	CEM	MARB	BF	REA
1	2.4	74	145	54	0.90	0.008	0.91
\$F	\$G	\$B	\$M	\$EN	\$C	\$W	
97	69	165	74	-16	288	75	

Lot 18 is a Connealy Craftsman bull who has good production and maternal numbers in YW, RDAG, and Milk. Top 25% in Claw, Angle, HS of the management segment. Off test weight ADG was 4.11.

21

CT PLUS 3 HINDSIGHT 20/20

Birth Date: 3/14/24 Bull 20962422 Tattoo: 2405

CT + 3 Farms • Cevin & Tonya Logsdon

Sire PFV INSIGHT 0129
SAV BRILLIANCE 8077
PVF MISSIE 790

ANGUS GS
Powered by Nogen GenCo

Dam PAF MISS BETSY 20

LINZ EXEMPLIFY 71124

JENSEN SHADOE 934 OF FAF

ACT BW	205 ADJ
71	762
Off Test WT 205 RATIO	
982	98
ADG	ADG RATIO
1.11	85
WDA	WDA RATIO
2.80	73
REA ADJ	FAT
14.8	0.15
IMF	ADJ YW
2.68	1124
IMF ADJ	SCROTAL
-1.11	

CED	BW	WW	YW	CEM	MARB	BF	REA
4	2.5	71	112	55	0.29	-0.002	1.20
\$F	\$G	\$B	\$M	\$EN	\$C	\$W	
98	43	141	61	-16	244	77	

This is a nice and docile bull out of a first calf heifer that is loaded with potential on both the dam and sire side. On the dam side, Connealy Confidence Plus the show bulls S&R Roundtable. On the sire side, he brings PVF Insight, not only a great show bull with many offspring winners but he also brings extra pounds at weaning time.

20

L B GROWTH FUND 408

Birth Date: 1/11/24 Bull 21057848 Tattoo: 408

Spencer's Grove Farms • Adam Bridgewater

Sire DEER VALLEY GROWTH FUND
BASIN PAYWEIGHT 1682
DEER VALLEY RITA 36113

ANGUS GS
Powered by Nogen GenCo

Dam G C SUPER BESSIE 315

SITZ UPWARD 307R

G C JANERA 814

ACT BW	205 ADJ
76	664
Off Test WT 205 RATIO	
1240	92
ADG	ADG RATIO
4.89	115
WDA	WDA RATIO
2.72	78
REA ADJ	FAT
12.6	0.3
IMF	ADJ YW
3.62	1163
IMF ADJ	SCROTAL
0.4	40

CED	BW	WW	YW	CEM	MARB	BF	REA
8	0.7	85	142	74	0.37	0.03	0.96
\$F	\$G	\$B	\$M	\$EN	\$C	\$W	
116	42	158	106	-5	311	92	

A Growth Fund son out of one of our favorite Super Bessie cows with calving ease. He is showing great \$ Value numbers at 10-20 percentiles.

23

CT PLUS 3 DARK KNIGHT 2403

Birth Date: 2/23/24 Bull 20962420 Tattoo: 2403

CT + 3 Farms • Cevin & Tonya Logsdon

Sire CT PLUS 3 JUGGERNAUT
SYDGEN ENHANCE
BTC KRISTEN 918

ANGUS GS
Powered by Nogen GenCo

Dam CF MISS FINAL ANSWER 651

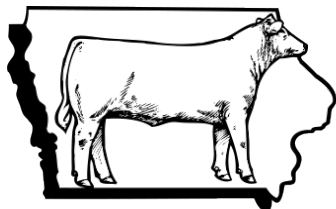
CF FINAL ANSWER 314

CF MISS FINAL ANSWER 909

ACT BW	205 ADJ
71	798
Off Test WT 205 RATIO	
1157	103
ADG	ADG RATIO
2.41	78
WDA	WDA RATIO
3.34	81
REA ADJ	FAT
13.2	0.38
IMF	ADJ YW
4.68	1188
IMF ADJ	SCROTAL
2.1	37

CED	BW	WW	YW	CEM	MARB	BF	REA
5	2.2	70	121	49	1.07	0	0.50
\$F	\$G	\$B	\$M	\$EN	\$C	\$W	
85	72	157	75	-7	279	72	

This is a nice and docile bull with high marbling, good feet, and good milk on both sides. The dam is very reliable with a calving interval of 7 at 364 days, birth ratio of 7 at 100, and wean ratio of 7 at 99.



IOWA CATTLEMEN'S ASSOCIATION

YOUR FUTURE IS OUR MISSION.

Renew Today!

www.iacattlemen.org

Yearling Angus Bulls

24

CF SOUTHSIDE 409

Birth Date: 2/17/24 Bull 21050513 Tattoo: 409
Foster's Angus • Craig Foster

ACT BW	205 ADJ
70	648
Off Test WT 205 RATIO	
1171	92
ADG	ADG RATIO
3.59	96
WDA	WDA RATIO
3.09	81
REA ADJ	FAT
13.8	0.23
IMF	ADJ YW
2.54	1183
IMF ADJ	SCROTAL
-1.34	39

Sire CF SOUTHSIDE 018
ANGUSGS
Dam HCC MA BELL R327
MEREDITH SOUTHSIDE 27
MISS CF BISMARCK 409
SAV BRUISER 9164
RAF TOTAL MA BELL 5603

CED	BW	WW	YW	CEM	MARB	BF	REA
11	-1	51	94	33	0.70	0.021	0.57
\$F	\$G	\$B	\$M	\$EN	\$C	\$W	
83	54	140	54	-6	236	45	

Heifer Bull - BW 70 lbs., 205 adj. wt. of 648 lbs. From a grandson of SAV Bruiser 9164. He has an attractive pattern and good muscle shape. He was weaned off fescue pasture.

25

CF SOUTHSIDE 422

Birth Date: 2/25/24 Bull 21050514 Tattoo: 422
Foster's Angus • Craig Foster

ACT BW	205 ADJ
74	674
Off Test WT 205 RATIO	
1136	96
ADG	ADG RATIO
3.48	91
WDA	WDA RATIO
3.12	80
REA ADJ	FAT
15.0	0.34
IMF	ADJ YW
3.73	1172
IMF ADJ	SCROTAL
0.57	39

Sire CF SOUTHSIDE 018
ANGUSGS
Dam CF MISS DUTY 708
MEREDITH SOUTHSIDE 27
MISS CF BISMARCK 409
CAV TOUR OF DUTY 506-4588
C F MISS DIRECTION 437

CED	BW	WW	YW	CEM	MARB	BF	REA
11	-1.2	50	87	36	0.66	-0.004	0.75
\$F	\$G	\$B	\$M	\$EN	\$C	\$W	
85	56	140	50	-9	232	48	

Heifer Bull - BW. 74 lbs, 205 adj. wt. of 674 lbs. If you are looking for a heifer bull-check this guy out! He is attractive with a good disposition and was weaned off fescue pasture.

26

CF HOMETOWN 418

Birth Date: 2/20/24 Bull 21050516 Tattoo: 418
Foster's Angus • Craig Foster

ACT BW	205 ADJ
80	729
Off Test WT 205 RATIO	
1277	104
ADG	ADG RATIO
7.33	105
WDA	WDA RATIO
3.41	89
REA ADJ	FAT
12.1	0.3
IMF	ADJ YW
4.09	1300
IMF ADJ	SCROTAL
1.15	41

Sire RR FIRST SHOT 102
ANGUSGS
Dam CF MISS BISMARCK 802
GAR HOMETOWN
RR BLACKBIRD 907
SAV BISMARCK 5682
HCC ELINE 606

CED	BW	WW	YW	CEM	MARB	BF	REA
6	2.4	69	121				
\$F	\$G	\$B	\$M	\$EN	\$C	\$W	
85			75	-14		53	

This bull is thick, very wide and deep bodied. He was weaned off fescue pasture with a 205-day adj. wt. of 729 lbs. He is a very easy keeper with good weight gaining ability. With GAR Hometown and SAV Bismarck breeding, he should sire good replacement females and thick steers.

28

IHCC WARRIOR 453

Birth Date: 2/23/24 Bull 21072396 Tattoo: 453
Indian Hills Comm. College • Brydon Kaster

ACT BW	205 ADJ
65	638
Off Test WT 205 RATIO	
1139	
ADG	ADG RATIO
1.56	100
WDA	WDA RATIO
2.98	80
REA ADJ	FAT
12.2	0.31
IMF	ADJ YW
2.93	1169
IMF ADJ	SCROTAL
-0.71	37

Sire S S BRICKYARD
ANGUSGS
Dam IHCC
S S NIAGARA Z29
LUCY S S C109
WERNER TOUCHDOWN 3065
IHCC ELLIE 31

CED	BW	WW	YW	CEM	MARB	BF	REA
8	0.1	60	112	46	0.62	-0.014	0.79
\$F	\$G	\$B	\$M	\$EN	\$C	\$W	
89	55	144	42	-27	229	59	

This Brickyard son has a well-balanced genetic profile and will bring calving ease and longevity to your herd. His genetics trace back to the Werner Family Angus lines and have been improved through an AI-only program facilitated by IHCC Ag students since 2012.



30

SA ATLANTIS 1315

Birth Date: 1/20/24 Bull 21018741 Tattoo: 1315
Schroeder Angus • Doug Schroeder

ACT BW	205 ADJ
80	
Off Test WT 205 RATIO	
1361	
ADG	ADG RATIO
4.89	111
WDA	WDA RATIO
3.26	87
REA ADJ	FAT
13.0	0.22
IMF	ADJ YW
3.62	1322
IMF ADJ	SCROTAL
0.4	45

Sire SA ATLANTIS 6975
ANGUSGS
Dam POLLARD BARBARA 1315
SQUARE B ATLANTIS 8060
SCHROEDER BARBARA 6975
QUAKER HILL GENESIS 7GN3
KW 3033 WEIGH UP 6222

CED	BW	WW	YW	CEM	MARB	BF	REA
11	1.3	80	146	65	1	-0.027	0.94
\$F	\$G	\$B	\$M	\$EN	\$C	\$W	
111	76	187	56	-32	299	69	

A powerful, well balanced son out of our SR herd sire. Double digit CED with a big spread birth to yearling, along with a powerful carcass influence. Lot 30's sire was bull calf champion at the Iowa State Fair in 2022 and then came back in 2024 for reserve grand champion. Along with super performance he also has an awesome phenotype.

Yearling Angus Bulls

31

SUMMIT GROWTH FUND 2418

Birth Date: 12/17/23 Bull 21052345 Tattoo: 2418

Summit Farms • Roy Miller

Sire DEER VALLEY GROWTH FUND
DEER VALLEY RITA 36113

ANGUS GS

Dam SUMMIT QUEEN 2316
SUMMIT SOUTHERN STYLE E12
NICHOLS QUEEN MOTHER D290

ACT BW	205 ADJ
90	
Off Test WT 205 RATIO	
1357	
ADG	ADG RATIO
4.74	114
WDA	WDA RATIO
2.88	80
REA ADJ	FAT
13.3	0.27
IMF	ADJ YW
3.7	1243
IMF ADJ	SCROTAL
0.52	40

CED	BW	WW	YW	CEM	MARB	BF	REA
5	2	85	159	83	0.60	0.021	0.81
\$F	\$G	\$B	\$M	\$EN	\$C	\$W	
131	52	183	36	-39	273	70	

If you are looking to add pounds to your calf crop, make sure to look at him. Gained well over 4 lbs. on the test. He is in the top 10% for WW and top 4% for YW. He will add pounds plus if you want to keep his daughters back, the Growth Fund females are making great cows all over the country.

33

SUMMIT RAINDANCE 2435

Birth Date: 1/12/24 Bull 21052353 Tattoo: 2435

Summit Farms • Roy Miller

Sire SAV RAINDANCE 6848
SAV BLACKCAP MAY 4136

ANGUS GS

Dam SUMMIT MS PRODUCT 2084
BASIN PAYWEIGHT 1682
GAR RETAIL PRODUCT 836

ACT BW	205 ADJ
92	
Off Test WT 205 RATIO	
1283	
ADG	ADG RATIO
5.19	98
WDA	WDA RATIO
3.07	81
REA ADJ	FAT
13.0	0.31
IMF	ADJ YW
2.93	1207
IMF ADJ	SCROTAL
-0.71	39

CED	BW	WW	YW	CEM	MARB	BF	REA
5	2.9	82	143	71	0.58	0.014	1.25
\$F	\$G	\$B	\$M	\$EN	\$C	\$W	
118	57	175	37	-24	264	65	

If you are looking to add pounds to your calf crop be sure to look at 33. Top 15% for WW and YW. Backed by a great dam pedigree that will make you smile when you sell your calves.

35

HAR WALL STREET M103

Birth Date: 2/28/24 Bull 21053987 Tattoo: M103

Harder Angus • Terry & Travis Harder

Sire DEER VALLEY WALL STREET
DEER VALLEY RITA 36113

ANGUS GS

Dam HAR ERICA J103
PVF INSIGHT 0129
BRF TEXAS ERICA F802

ACT BW	205 ADJ
74	631
Off Test WT 205 RATIO	
1049	97
ADG	ADG RATIO
2.00	104
WDA	WDA RATIO
2.65	75
REA ADJ	FAT
14.1	0.3
IMF	ADJ YW
2.83	1131
IMF ADJ	SCROTAL
-0.87	38

CED	BW	WW	YW	CEM	MARB	BF	REA
3	1.6	62	110	49	0.70	0.073	0.90
\$F	\$G	\$B	\$M	\$EN	\$C	\$W	
96	54	150	47	-10	242	40	

Deer Valley Wall Street is a full brother to Growth Fund, and consistently packs high growth in a balanced package. This bull is sure to sire fast growing, well designed calves that will bring premiums.

36

HAR FUSION M708

Birth Date: 2/5/24 Bull 21053989 Tattoo: M708

Harder Angus • Terry & Travis Harder

Sire CHESTNUT FUSION 61
SQUARE B ATLANTIS 8060
CHESTNUT BEAUTY 948

ANGUS GS

Dam NU INUS
PVF INSIGHT 0129
N U BABE

ACT BW	205 ADJ
78	615
Off Test WT 205 RATIO	
1122	112
ADG	ADG RATIO
0.56	112
WDA	WDA RATIO
2.59	75
REA ADJ	FAT
13.8	0.17
IMF	ADJ YW
2.64	1100
IMF ADJ	SCROTAL
-1.18	38

CED	BW	WW	YW	CEM	MARB	BF	REA
-1	3.1	67	112	41	0.19	-0.066	1.30
\$F	\$G	\$B	\$M	\$EN	\$C	\$W	
90	44	134	64	-15	238	56	

A Chestnut Fusion bull that is sure to add muscle and power. Out of picture perfect Insight cow with awesome udder, feet and legs. Fusion is a newer bull for the Chestnut crew, but early reports are promising.

47

SA CA LO BLOCKADE 786

Birth Date: 1/20/24 Bull 21021152 Tattoo: 786

Schroeder Angus • Doug Schroeder

Sire 4M BLOCKADE 120
SITZ BARRICADE 632F
EF EVERELDA ENTENSE 2421

ANGUS GS

Dam WK LADY MAY 2347
KROUPALS B&B IDENTITY
THOENE TRAVELER 004-563

ACT BW	205 ADJ
82	
Off Test WT 205 RATIO	
1297	
ADG	ADG RATIO
3.85	101
WDA	WDA RATIO
3.9	83
REA ADJ	FAT
14.7	0.23
IMF	ADJ YW
3.26	1242
IMF ADJ	SCROTAL
-0.18	40

CED	BW	WW	YW	CEM	MARB	BF	REA
6	2.1	72	126	72	0.1	-0.009	1.21
\$F	\$G	\$B	\$M	\$EN	\$C	\$W	
117	35	152	259	-24	256	69	

A full brother to Lot 6. The Lady May cow has proven herself many times. We cannot say enough about Identity daughters. Strong EPDs with a Ribeye EPD at +1.25.



DEER VALLEY WALL STREET
SIRE OF LOT 35

Yearling Simmental Bulls

SYMBOL OF EXCELLENCE

39

WS 251EM

Birth Date: 2/17/24 Bull 4408399 Tattoo: 251EM

Wolfe Simmentals • Bill & Jane Wolfe

Sire HHS MR ENTOURAGE 867B
LCDR RESERVE 210J
LCDR MS ECHO 43E
Dam WS 251UE
WS 251NU

SimGenetics
PROFIT THROUGH SCIENCE
American Simmental Association

ACT BW	205 ADJ
87	624
Off Test WT 205 RATIO	
1152	104
ADG	ADG RATIO
3.44	103
WDA	WDA RATIO
3.97	80
REA ADJ	FAT
15.2	0.19
IMF	ADJ YW
3.19	1164
IMF ADJ	SCROTAL
3.2	39

CED	BW	WW	YW	CEM	MARB	BF	REA
9	3	96.9	147.7	53.3	0.17	-0.089	1.35
YG	STAY	TI	API				
-0.47	14.1	89.1	132.5				

Purebred Simmental - BLK-White Spot

This bull is black with a white diamond on his face. He was tested homozygous black by GeneSeek. His WW and YW EPDs are both in the top 10%. His Terminal Index is in the top 25%.

41

WS 2PAM

Birth Date: 2/18/24 Bull 4408400 Tattoo: 2PAM

Wolfe Simmentals • Bill & Jane Wolfe

Sire HHS MR ENTOURAGE 867B
LCDR RESERVE 210J
LCDR MS ECHO 43E
Dam WS 2MPA
WS2MP

SimGenetics
PROFIT THROUGH SCIENCE
American Simmental Association

ACT BW	205 ADJ
93	675
Off Test WT 205 RATIO	
1184	113
ADG	ADG RATIO
3.04	105
WDA	WDA RATIO
4.04	82
REA ADJ	FAT
15.3	0.22
IMF	ADJ YW
3.39	1219
IMF ADJ	SCROTAL
3.4	39

CED	BW	WW	YW	CEM	MARB	BF	REA
10.4	1.7	90.3	133	27.8	0.39	-0.052	0.94
YG	STAY	TI	API				
-0.36	18.8	91.6	153.4				

Purebred Simmental - Blk Baldie

This bull is black with a blaze face. His dam has an average WW ratio 104 and an average calving interval of 362 days on 10 calves. His WW EPDs are in the top 15%. His YW & API are in the top 25%. He was tested homozygous black by GeneSeek.

45

NDA INNOVATOR M414

Birth Date: 2/22/24 Bull 4452529 Tattoo: M414

Arens Cattle Co. • Nate Arens

Sire TJ MAIN EVENT 503B
CDI INNOVATOR 325D
CDI MS SHEAR FORCE 49U
Dam VCC ROSE K6
SH ROSE 2694

SimGenetics
PROFIT THROUGH SCIENCE
American Simmental Association

ACT BW	205 ADJ
75	660
Off Test WT 205 RATIO	
1149	102
ADG	ADG RATIO
2.52	109
WDA	WDA RATIO
4.19	81
REA ADJ	FAT
14.1	0.17
IMF	ADJ YW
2.17	1236
IMF ADJ	SCROTAL
2.19	

CED	BW	WW	YW	CEM	MARB	BF	REA
12.5	1.5	88.7	142.1	44.8	0.34	-0.034	0.86
YG	STAY	TI	API				
-0.22	13.1	86.6	131.6				

5/8 Simmental

This CDI Innovator son is a growth bull that will add the pounds. He ranks in the top 15% for WW, YW, MW and Milk. Top 25% for CW and Ribeye. Backed by one of our best cow lines VCC Rose K6. Genomic enhanced EPDs. Tested homozygous black and polled.

43

VCC JACKSON M95

Birth Date: 1/28/24 Bull 4452409 Tattoo: M95

Vajgrt Cattle Co • Michael & Taylor Vajgrt

Sire HOOK'S FULL FIGURES 11F
FIVE STAR JACKSON J10
KBHR F316
Dam NDA VCC EPIC ROSE H94
VCC DENA'S ROSE F694

SimGenetics
PROFIT THROUGH SCIENCE
American Simmental Association

ACT BW	205 ADJ
77	609
Off Test WT 205 RATIO	
1176	
ADG	ADG RATIO
3.78	100
WDA	WDA RATIO
3.85	77
REA ADJ	FAT
13.4	0.22
IMF	ADJ YW
3.01	1150
IMF ADJ	SCROTAL
2.98	40

CED	BW	WW	YW	CEM	MARB	BF	REA
15.6	-0.1	88.2	134.5	38.8	0.58	0.059	1.15
YG	STAY	TI	API				
0.39	14	99.1	164.7				

Purebred Simmental

We think this Jackson son is a perfect blend of genomic and phenotype. We recommend using this bull on heifers and cows. A bull that will work in your operation if you are keeping replacements or selling cattle by the pound. This bull ranks in the top 10% in the following six categories including DE, MCE, DOC, MARB, REA, API and TI. VCC Jackson BW, WW, YW, ADG, MILK and CW allow him to be in the top 25%. The dam of this bull is making waves in our program and her sons and daughter are proving it for being a young donor in our program that is backed by our best cow family.

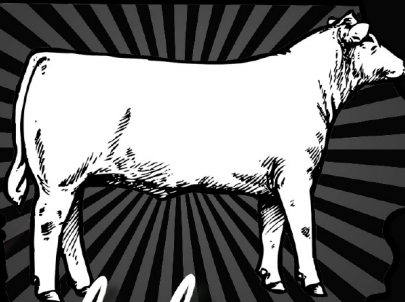
Online Bidding Available at:

LiveAuctions.TV



LCDR RESERVE 210J
SIRE OF LOT 39 & 41

★ ★ ★ ★ ★
**IOWA CATTLEMEN'S
ASSOCIATION**



Symbol of
EXCELLENCE
PERFORMANCE BULL SALE

MONDAY, MARCH 24, 2025
TAMA LIVESTOCK AUCTION
6:30 P.M.