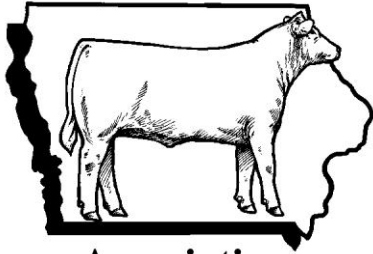


Iowa Cattlemen's



Association

MAP21-Moving Ahead for Progress in the 21st Century

ICA Fact Sheet

April 2013

MAP21 Overview

On October 1, 2012 a two-year federal-aid highway reauthorization bill: Moving Ahead for Progress in the 21st Century Act became effective. Although this act has yet to be written as federal code, the state of Iowa has decided to honor the provisions set forth in MAP21. In this act commercial motor vehicles operating as "covered farm vehicles" became exempt from certain Federal Motor Carrier Safety Regulations.

Commercial Motor Vehicles – Determined by vehicle weight or gross vehicle weight rating (GVWR).

- Between state commerce:
 - Over 10,000 lbs. single motor vehicle weight/weight rating.
 - Over 10,000 lbs. combination motor vehicle weight/weight rating.
 - Need to be marked with DOT number and UCR.
- Within state commerce:
 - Over 10,000 lbs. single motor vehicle weight/weight rating.
 - Over 26,000 lbs. combination motor vehicle weight/weight rating.
 - Vehicles transporting placarded quantities of hazardous materials.

Vehicles and trailers should have GVWR stickers. When present they are combined to get the total weight. If no GVWR exists, the trailer will be weighed and added to the power unit GVWR to determine driver license requirements.

Covered Farm Vehicles – Determined by operator and vehicle weight.

- Operated by a farm/ranch owner, operator, or family member.
- Transports agriculture commodities, livestock, machinery, and supplies to and from farm/ranch.
- NOT-for-hire.
- Cannot transport hazardous materials in placard quantities.

Vehicle Weight	Operational Capacity
< 26,000 lbs.	Anywhere in Iowa. Anywhere in US.
> 26,000 lbs.	Anywhere in Iowa. If out of state, must be within 150 mile radius of farm/operation.

Covered farm vehicles need farm vehicle designation:

- Special farm plate sticker.
 - Sticker fee based on proposed tonnage to be hauled.
 - Annual mileage restriction.
- Completed *Designation as Iowa Covered Farm Vehicle* form available at county treasurer's office or online- <https://forms.iowadot.gov/FormsMgt/External/441088.pdf>.
 - Must be carried in vehicle during operation and available for inspection.
 - No fee required.
 - No annual mileage restriction.

Covered farm vehicle driver exemptions:

- No CDL required.
- No substance and/or alcohol testing, physical and/or medical examinations.
- No Hours of Service reporting.

Breakout for Farmer (NOT-for-hire) License Classes

License Class	Vehicle	Vehicle Weight	Radial Distance
C	< 16,000		
C	Straight Truck	16,000-26,000	
C	Straight Truck	>26,000	<150 miles
C	Pickup & Trailer	<26,000	
C	Pickup & Trailer	>26,000	<150 miles
D-1	Semi & Trailer	>26,000	<150 miles
B-CDL	Straight Truck	>26,000	>150 miles
A-CDL	Pickup & Trailer	>26,000	>150 miles
A-CDL	Semi & Trailer	>26,000	>150 miles

Additional New Rules & Regulations:

- Using a hand-held mobile device while driving a covered motor vehicle is considered a traffic violation-with potential to have CDL disqualification.
 - Hands free applications are allowed: head-sets and/or speaker phone function.
 - Ruling applies to operation of covered farm vehicles.
- A vehicle hauling an implement of husbandry does not need a permit or covered farm vehicle form; however it must have:
 - Flashing amber lights visible 360 degrees.
 - Warning flags at the widest point.
 - Operate from ½ hr prior to sunrise to ½ hr past sunset.
 - Cannot operate on the interstate system.

Interstate Travel Advisory:

The provisions of MAP-21 are not being adopted uniformly or coincidentally by individual states. Therefore, if you plan to travel in other states using the covered farm vehicle exemptions, be sure to know what regulations apply in those states. At this time Missouri, Kansas, Wyoming, Colorado, and Minnesota have agreed to immediately honor the covered farm vehicle exemptions for Iowa's farm operators traveling in their states. Listed below are neighboring states that have yet to agree to honor such exemptions:

- Nebraska: Nebraska State Patrol, Carrier Enforcement Division 402-471-0105
- Wisconsin: Motor Carrier Enforcement 608-267-9762
- South Dakota: Motor Carrier Headquarters 605-773-4578
- Illinois: State Patrol Commercial Vehicles Section 217-782-6629

For more information:

Contact Iowa Motor Vehicle Enforcement Office: 1-800-925-6469.

Prepared by Justine Stevenson, ICA Director of Government Relations & Public Policy. Adapted from the State of Iowa's Implementation of the Agricultural-Related Provisions of MAP-21 Notice of Actions and Guidanc. Issued: Oct. 16, 2012.