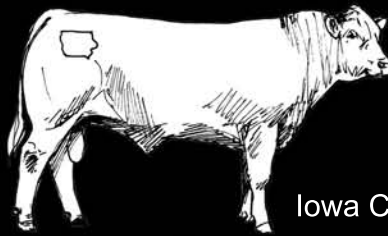


Bloomfield Catalog 2010

BOB



Iowa Cattlemen's Association

Symbol of Excellence

Performance Bull Sale

March 22, 2010 • 6:30 p.m.

Bloomfield Livestock Auction • Ph. 641-664-2435

Iowa Cattlemen's Association Annual

Performance Selected Bull Sale

Monday, March 22, 2010 — Sale: 6:30 p.m.

Bloomfield Livestock Auction • Bloomfield, IA



Welcome to the ICA Bloomfield Bull Sale!

Spring 2010 is just around the corner and shortly we can look forward to waking up to green grass and baby calves. Spring 2010 is extra special this year as we mark the 25th anniversary of the ICA performance tested sales.

We have an outstanding group of bulls and heifers to offer this spring just in time for that green grass. We appreciate your interest and support of the program over the years.

As you review the catalog, we hope you find the bull that will complement your cow herd and move your program to the next profit level. Please feel free to contact the consignors, the sales force or myself, if you have questions or need assistance prior to sale time.

Sincerely,
Kellie Carolan



Thirty-seven yearling bulls and 10 fall bulls finished the tests at Amana Farms and Kirkwood Community College, respectively. This sale group averaged over 3.75 pounds per day on the 112-day test. Our thanks go out to the Amana Farms and the Kirkwood staff for a job well-done.

Bulls must meet strict selection criteria to be eligible for an ICA sale and be worthy of the ICA 'Symbol of Excellence.' Only the top two-thirds of bulls (within their respective breeds) are cataloged for this sale. These elite bulls will be offered with an established floor of \$1,200. All bulls offered for sale must meet the four minimum guidelines listed below.

1. Minimum ADG ratio of 90.
2. Minimum 1,100-pound adjusted yearling weight.
3. Minimum 11.5-square inch ultrasound ribeye area measurement.
4. Minimum 32-centimeter scrotal circumference measurement.

The sale bulls are then ranked based on a Terminal Index, which incorporates those traits for optimum growth and carcass characteristics. The following is the formula used to calculate the Terminal Index. Each of the traits is standardized and the sum total becomes the Terminal Index.

| | |
|-----|---|
| 30% | Average Daily Gain |
| 30% | Weight Per Day of Age |
| 10% | Weaning Weight EPD |
| 10% | Yearling Weight EPD |
| 10% | Ultrasound Measurement for Marbling |
| 10% | Ultrasound Measurement for Retail Product |

Each bull carries an ICA electronic identification (EID) tag. The ICA EID program is utilized for the testing program, so each bull buyer will be supplied with the information that is gathered throughout the testing period.

47 Bulls Sell!

27 Angus

3 Chi-Angus

7 Simmental

PLUS 10 Fall Bulls

Sale Manager:

Kellie Carolan
ICA Seedstock Manager
515-296-2266 (office)
641-751-0737 (cell)

Sale Representatives:

Tom Rooney
Midwest Marketer
(515) 491-6025

Mike Sorensen
Livestock Plus
641-745-7949

Wes Tiemann
American Angus Assoc.
(816) 244-4462

Auctioneer:

Phil Schooley • 641-664-3450

Sale Information:

Bids may be accepted by sale representatives or managers.

Sale Day Phone:

641-664-2435

Bulls may be inspected at the Bloomfield Livestock Auction on March 20 until the sale. Prior inspection may be made at Amana Farms. Please contact Scottie Club at 319-622-7551.

March 2010

Dear Prospective Buyers:

The cattle offered at this sale were screened negative for persistent Bovine Virus Diarrhea (BVD) infection. Upon arrival at the testing facility, an ear notch was taken from each animal and submitted to the Iowa State Veterinary Diagnostic Laboratory. The immunohistochemistry (ICH) test was used to identify any possible carriers, and those were sent home. The IHC test is highly specific, as well as sensitive, thereby reducing the possibility of either false negative or false positive results. Persistently infected (PI) animals develop when the cow is infected during gestation. The developing calf may incorporate the BVD virus into its immune system and subsequently shed BVD virus its entire life. PI animals may appear normal in every respect, but may be a "time bomb" within the herd.

BVD is a highly complex and contagious disease that can be devastating within a cowherd or a feedlot. This proactive approach by the consignors to the Iowa Cattlemen's Association testing program is to be commended. You can purchase animals from this sale and feel comfortable that no persistently infected animal will be bringing an outside strain into your herd. This screening program is relatively new, yet the accuracy makes it a tool you may wish to incorporate into your own herd.

If you have questions about BVD or this test, feel free to contact me. I would be happy to visit with you about how this screening program was used.

Sincerely,

Tom Ulrickson, DVM

Bull Sale Order

| Price | Lot# | Breed |
|-------|------|------------------|
| | 71 | Fall (Angus) |
| | 83 | Fall (Red Angus) |
| | 75 | Fall (Angus) |
| | 76 | Fall (Angus) |
| | 78 | Fall (Angus) |
| | 73 | Fall (Angus) |
| | 70 | Fall (Angus) |
| | 77 | Fall (Angus) |
| | 81 | Fall (Gelbvieh) |
| | 80 | Fall (Angus) |
| | 56 | Simmental |
| | 47 | Chi-Angus |
| | 15 | Angus |
| | 58 | Simmental |
| | 45 | Chi-Angus |
| | 34 | Angus |
| | 2 | Angus |
| | 10 | Angus |
| | 54 | Simmental |
| | 46 | Chi-Angus |
| | 25 | Angus |
| | 1 | Angus |
| | 24 | Angus |
| | 57 | Simmental |

| Price | Lot# | Breed |
|-------|------|-----------|
| | 5 | Angus |
| | 21 | Angus |
| | 19 | Angus |
| | 59 | Simmental |
| | 17 | Angus |
| | 40 | Angus |
| | 39 | Angus |
| | 60 | Simmental |
| | 33 | Angus |
| | 20 | Angus |
| | 27 | Angus |
| | 51 | Simmental |
| | 28 | Angus |
| | 4 | Angus |
| | 9 | Angus |
| | 7 | Angus |
| | 42 | Angus |
| | 14 | Angus |
| | 29 | Angus |
| | 44 | Angus |
| | 12 | Angus |
| | 43 | Angus |
| | 22 | Angus |
| | 8 | Angus |

**ANGUS BREED AVERAGE EPD's (for non-parent bulls): CED 5.0, BW 2.1, WW 45.0, YW 82.0, MCE 6.0, MM 21.0, MWW N/A,
 \$W 24.87, \$F 23.88, \$G 21.98, \$B 41.10, \$EN 2.01, HCW 12.0, MARB 0.33, BF 0.013, REA 0.17
 ULTRASOUND TEST AVERAGE FOR ICA FALL TEST: ADJ-REA 14.9, BF 0.35, MB 4.05**

70 **Angus** PB Polled

| | |
|---|--|
| R&C Angus P.O. Box 110, 18269 Military Rd (319) 465-5058 | Ruhl & Cheryl Barker Monticello, IA 52310-0110 |
|---|--|

| | | | | | | | |
|--------------------------------|---------------|-----------|----------|------|-----|------|-------------|
| 10/21/2008 | Reg# 16416286 | BW | 82 | | | | |
| Black | | 205 WT | 728 | | | | |
| | | 205-RATIO | 100 (ET) | | | | |
| Bon View Bando 598 | | FINAL WT | 1417 | | | | |
| S A F 598 Bando 5175 | | ADG | 3.76 | | | | |
| S A F Royal Lass 1002 | | ADG RATIO | 103 | | | | |
| BR-R&C 82U | | WDA | 2.90 | | | | |
| Summitcrest High Prime 0H29 | | WDA RATIO | 98 | | | | |
| LaGrand Forever Lady 4555 | | SCRM | 42.0 | | | | |
| V A R Forever Lady 4304 | | ADJ YW | 1336 | | | | |
| | | PELVIC-HT | 13.0 | | | | |
| | | PELVIC-WD | 16.0 | | | | |
| PRODUCTION/MATERNAL EPD | | | | | | | |
| CED | BW | WW | YW | MCE | MM | MWW | PELVIC AREA |
| - | - | - | - | - | - | - | 177.0 |
| | | | | | | | FR SC |
| | | | | | | | 5.8 |
| | | | | | | | ADJ REA |
| | | | | | | | 15.70 |
| ANGUS \$VALUES INDEXES | | | | | | | |
| \$W | \$F | \$G | \$QG | \$YG | \$B | \$EN | BF |
| - | - | - | - | - | - | - | 0.40 |
| | | | | | | | MARB |
| | | | | | | | 4.72 |
| | | | | | | | % RP |
| | | | | | | | 66.2 |

*Ultrasound date was out scanning age range, actual scan data is reported

| | | | |
|--------------------|------|----|-----|
| CARCASS EPD | | | |
| HCW | MARB | BF | REA |
| - | - | - | - |

LaGrand Forever Lady is a top donor cow out of Summitcrest High Prime 0H29 leading the breed in the top 2% in Marb, RE, Fat, \$W, \$G, \$QG, and \$YG while "5175" leads the breed in WW, YW, YH, Milk, and \$F. This mating was made to add pounds & carcass traits. BR-R&C 82U has a 15.7 ribeye with 4.72 %IMF and gained 3.76 lb/day as a long yearling.

71 **Angus** PB Polled

| | |
|---|---|
| Golden Chute Ranch 600 Dows St, PO Box 38 (319) 448-4118 | G.N. Neumeier Walker, IA 52352- |
|---|---|

| | | | | | | | |
|--------------------------------|---------------|-----------|------|------|------|------|-------------|
| 9/6/2008 | Reg# 16334731 | BW | 78 | | | | |
| Black | | 205 WT | 654 | | | | |
| | | 205-RATIO | 94 | | | | |
| G A R Grid Maker | | FINAL WT | 1634 | | | | |
| GPAR Weight Maker S15 | | ADG | 5.04 | | | | |
| G A R New Design M249 | | ADG RATIO | 138 | | | | |
| G C Weight Maker 866 | | WDA | 3.06 | | | | |
| B/R New Frontier 095 | | WDA RATIO | 103 | | | | |
| Brockmere Julia 2222 | | SCRM | 45.5 | | | | |
| Brockmere Julia | | ADJ YW | 1395 | | | | |
| | | PELVIC-HT | 14.0 | | | | |
| | | PELVIC-WD | 17.0 | | | | |
| PRODUCTION/MATERNAL EPD | | | | | | | |
| CED | BW | WW | YW | MCE | MM | MWW | PELVIC AREA |
| 6.0 | 3.4 | 51.0 | 92.0 | 8.0 | 15.0 | - | 195.8 |
| | | | | | | | FR SC |
| | | | | | | | 6.6 |
| | | | | | | | ADJ REA |
| | | | | | | | 15.80 |
| ANGUS \$VALUES INDEXES | | | | | | | |
| \$W | \$F | \$G | \$QG | \$YG | \$B | \$EN | BF |
| 22.24 | 30.76 | - | - | - | - | 4.74 | 0.37 |
| | | | | | | | MARB |
| | | | | | | | 5.40 |
| | | | | | | | % RP |
| | | | | | | | 64.8 |

*Ultrasound date was out scanning age range, actual scan data is reported

| | | | |
|--------------------|------|----|-----|
| CARCASS EPD | | | |
| HCW | MARB | BF | REA |
| - | - | - | - |

A true performance bull. His sire was the high gaining bull (over 700 lbs) at the Midland bull test in Montana. He will add pounds to his calves along with positive carcass traits.

73 **Angus** PB Polled

| | |
|--|---|
| Spencer Grove Farms 4717 Spencers Grove Rd | Larry Bridgewater Walker, IA 52352- |
|--|---|

| | | | | | | | |
|--------------------------------|---------------|-----------|------|------|------|------|-------------|
| 9/19/2008 | Reg# 16334759 | BW | 82 | | | | |
| Black | | 205 WT | 675 | | | | |
| | | 205-RATIO | 97 | | | | |
| Big Elban of Graham 38425 | | FINAL WT | 1576 | | | | |
| Sydgen 38425 Elban 5411 | | ADG | 3.86 | | | | |
| Tehama Blackcap G360 | | ADG RATIO | 106 | | | | |
| SGL Elban 869 | | WDA | 3.02 | | | | |
| Woodhill Gibraltar | | WDA RATIO | 102 | | | | |
| GC Ruby 221 | | SCRM | 40.0 | | | | |
| Golden Chute Ruby 045 | | ADJ YW | 1378 | | | | |
| | | PELVIC-HT | 13.0 | | | | |
| | | PELVIC-WD | 16.0 | | | | |
| PRODUCTION/MATERNAL EPD | | | | | | | |
| CED | BW | WW | YW | MCE | MM | MWW | PELVIC AREA |
| -3.0 | 4.0 | 47.0 | 87.0 | 4.0 | 17.0 | - | 169.0 |
| | | | | | | | FR SC |
| | | | | | | | 6.3 |
| | | | | | | | ADJ REA |
| | | | | | | | 15.00 |
| ANGUS \$VALUES INDEXES | | | | | | | |
| \$W | \$F | \$G | \$QG | \$YG | \$B | \$EN | BF |
| 20.29 | 27.34 | - | - | - | - | 4.55 | 0.51 |
| | | | | | | | MARB |
| | | | | | | | 4.94 |
| | | | | | | | % RP |
| | | | | | | | 62.9 |

*Ultrasound date was out scanning age range, actual scan data is reported

| | | | |
|--------------------|------|----|-----|
| CARCASS EPD | | | |
| HCW | MARB | BF | REA |
| - | - | - | - |

Bred in performance with Ext and Big Elban on the sire side, along with Woodhill Checkmate and G.C. Weightlifter on the dam side.

75 **Angus** PB Polled

| | |
|---|--|
| Liston Turtle Rock Angus 1234 606th Ave (641) 946-8135 | Jeff Liston Lovilia, IA 50150- |
|---|--|

| | | | | | | | |
|--------------------------------|---------------|-----------|-------|------|-------|------|-------------|
| 9/14/2008 | Reg# 16412059 | BW | 80 | | | | |
| Black | | 205 WT | N/A | | | | |
| | | 205-RATIO | N/A | | | | |
| S V F Bandolier | | FINAL WT | 1650 | | | | |
| T L Bandolier 53D-802 | | ADG | 3.59 | | | | |
| Hyline Pride Lucy 611 | | ADG RATIO | 98 | | | | |
| Turtlerock Bandolier U42 | | WDA | 3.14 | | | | |
| Papa Durabull 9805 | | WDA RATIO | 106 | | | | |
| H A Revolution Lady 0455 | | SCRM | 35.0 | | | | |
| H A Rito Lady 3052 | | ADJ YW | 1429 | | | | |
| | | PELVIC-HT | 13.0 | | | | |
| | | PELVIC-WD | 17.5 | | | | |
| PRODUCTION/MATERNAL EPD | | | | | | | |
| CED | BW | WW | YW | MCE | MM | MWW | PELVIC AREA |
| 5.0 | 3.4 | 43.0 | 75.0 | 4.0 | 24.0 | - | 187.3 |
| | | | | | | | FR SC |
| | | | | | | | 6.2 |
| | | | | | | | ADJ REA |
| | | | | | | | 15.40 |
| ANGUS \$VALUES INDEXES | | | | | | | |
| \$W | \$F | \$G | \$QG | \$YG | \$B | \$EN | BF |
| 23.40 | 17.65 | 18.50 | 11.26 | - | 32.88 | 1.89 | 0.31 |
| | | | | | | | MARB |
| | | | | | | | 5.26 |
| | | | | | | | % RP |
| | | | | | | | 64.8 |

*Ultrasound date was out scanning age range, actual scan data is reported

| | | | |
|--------------------|------|--------|------|
| CARCASS EPD | | | |
| HCW | MARB | BF | REA |
| 7.0 | 0.14 | -0.018 | 0.07 |

**ANGUS BREED AVERAGE EPD's (for non-parent bulls): CED 5.0, BW 2.1, WW 45.0, YW 82.0, MCE 6.0, MM 21.0, MWW N/A,
\$W 24.87, \$F 23.88, \$G 21.98, \$B 41.10, \$EN 2.01, HCW 12.0, MARB 0.33, BF 0.013, REA 0.17
ULTRASOUND TEST AVERAGE FOR ICA FALL TEST: ADJ-REA 14.9, BF 0.35, MB 4.05**

76 **Angus** PB Polled

Spencer Grove Farms **Larry Bridgewater**
4717 Spencers Grove Rd Walker, IA 52352-

| | | | | | | | | | |
|-------------------------|---------------------------|------|------|-----|------|------|-------------|-----------|-------|
| 9/5/2008 | Reg# 16334720 | | | | | | | BW | 80 |
| | Black | | | | | | | 205 WT | 685 |
| | | | | | | | | 205-RATIO | 98 |
| | Big Elban of Graham 38425 | | | | | | | FINAL WT | 1627 |
| | Syngen 38425 Elban 5411 | | | | | | | ADG | 4.33 |
| | Tehama Blackcap G360 | | | | | | | ADG RATIO | 118 |
| SGL Elban 865 | | | | | | | | WDA | 3.04 |
| | GC Trail Boss 115 | | | | | | | WDA RATIO | 103 |
| | G C Bold Ruler | | | | | | | SCRM | 39.0 |
| | T R A Bold Ruler 9139 | | | | | | | ADJ YW | 1387 |
| | | | | | | | | PELVIC-HT | 13.0 |
| | | | | | | | | PELVIC-WD | 16.0 |
| PRODUCTION/MATERNAL EPD | | | | | | | | | |
| CED | BW | WW | YW | MCE | MM | MWW | PELVIC AREA | | |
| -2.0 | 3.4 | 45.0 | 75.0 | 3.0 | 17.0 | - | 165.5 | FR SC | 5.9 |
| | | | | | | | | ADJ REA | 14.10 |
| ANGUS \$VALUES INDEXES | | | | | | | | | |
| SW | SF | \$G | \$QG | SYG | SB | SEN | | BF | 0.75 |
| 23.83 | 16.56 | - | - | - | - | 8.19 | | MARB | 4.86 |
| | | | | | | | | % RP | 59.0 |

*Ultrasound date was out scanning age range, actual scan data is reported

| | | | |
|-------------|------|----|-----|
| CARCASS EPD | | | |
| HCW | MARB | BF | REA |
| - | - | - | - |

Another easy keeping docile calf that will add pounds to his calves.

77 **Angus** PB Polled

Golden Chute Ranch **G.N. Neumeier**
600 Dows St, PO Box 38 Walker, IA 52352-
(319) 448-4118

| | | | | | | | | | |
|-------------------------|-----------------------|------|------|-----|------|------|-------------|-----------|-------|
| 9/20/2008 | Reg# 16334760 | | | | | | | BW | 80 |
| | Black | | | | | | | 205 WT | 697 |
| | | | | | | | | 205-RATIO | 100 |
| | G A R Grid Maker | | | | | | | FINAL WT | 1510 |
| | GPAR Weight Maker S15 | | | | | | | ADG | 3.28 |
| | G A R New Design M249 | | | | | | | ADG RATIO | 90 |
| G C Weight Maker 870 | | | | | | | | WDA | 2.90 |
| | Woodhill Fame 162-289 | | | | | | | WDA RATIO | 98 |
| | G C Blackbird 3030 | | | | | | | SCRM | 44.0 |
| | G C Blackbird 647 | | | | | | | ADJ YW | 1323 |
| | | | | | | | | PELVIC-HT | 14.0 |
| | | | | | | | | PELVIC-WD | 16.0 |
| PRODUCTION/MATERNAL EPD | | | | | | | | | |
| CED | BW | WW | YW | MCE | MM | MWW | PELVIC AREA | | |
| 4.0 | 3.4 | 55.0 | 96.0 | 7.0 | 17.0 | - | 185.3 | FR SC | 6.2 |
| | | | | | | | | ADJ REA | 14.10 |
| ANGUS \$VALUES INDEXES | | | | | | | | | |
| SW | SF | \$G | \$QG | SYG | SB | SEN | | BF | 0.41 |
| 24.43 | 33.23 | - | - | - | - | 1.76 | | MARB | 4.01 |
| | | | | | | | | % RP | 63.4 |

*Ultrasound date was out scanning age range, actual scan data is reported

| | | | |
|-------------|------|----|-----|
| CARCASS EPD | | | |
| HCW | MARB | BF | REA |
| - | - | - | - |

Weight maker calves have moderate birth weights & are easy calving. They are very quiet & an easy keepers. Dam has 2 @ 105 ratio for weaning.

78 **Angus** PB Polled

Golden Chute Ranch **G.N. Neumeier**
600 Dows St, PO Box 38 Walker, IA 52352-
(319) 448-4118

| | | | | | | | | | |
|-------------------------|------------------------|-------|-------|-----|-------|-------|-------------|-----------|-------|
| 9/28/2008 | Reg# 16334761 | | | | | | | BW | 76 |
| | Black | | | | | | | 205 WT | 721 |
| | | | | | | | | 205-RATIO | 103 |
| | G A R Grid Maker | | | | | | | FINAL WT | 1505 |
| | GPAR Weight Maker S15 | | | | | | | ADG | 3.76 |
| | G A R New Design M249 | | | | | | | ADG RATIO | 103 |
| G C Weight Maker 873 | | | | | | | | WDA | 2.94 |
| | G D A Universe 726G | | | | | | | WDA RATIO | 99 |
| | Sir Wms Eline 4802 | | | | | | | SCRM | 40.0 |
| | Shadow Hill Eline 8480 | | | | | | | ADJ YW | 1337 |
| | | | | | | | | PELVIC-HT | 13.5 |
| | | | | | | | | PELVIC-WD | 17.5 |
| PRODUCTION/MATERNAL EPD | | | | | | | | | |
| CED | BW | WW | YW | MCE | MM | MWW | PELVIC AREA | | |
| 6.0 | 3.1 | 61.0 | 103.0 | 8.0 | 17.0 | - | 199.5 | FR SC | 5.0 |
| | | | | | | | | ADJ REA | 14.50 |
| ANGUS \$VALUES INDEXES | | | | | | | | | |
| SW | SF | \$G | \$QG | SYG | SB | SEN | | BF | 0.35 |
| 26.99 | 38.01 | 23.96 | 15.84 | - | 49.26 | -0.44 | | MARB | 3.81 |
| | | | | | | | | % RP | 64.5 |

*Ultrasound date was out scanning age range, actual scan data is reported

| | | | |
|-------------|------|--------|------|
| CARCASS EPD | | | |
| HCW | MARB | BF | REA |
| 15.0 | 0.25 | -0.019 | 0.26 |

Weightmaker calves just keep on performing. Remember he is sired by the Grid Maker that also puts carcass EPDs as a bonus. Dam has 3 calves @ 106 weaning ratio.

80 **Angus** PB Polled

Schaefer Angus **Craig Schaefer**
7524 Independence Ave Waterloo, IA 50703-
(319) 233-2639

| | | | | | | | | | |
|-------------------------|-----------------------|-------|-------|-----|-------|-------|-------------|-----------|-------|
| 9/7/2008 | Reg# 16412835 | | | | | | | BW | 78 |
| | Black | | | | | | | 205 WT | 597 |
| | | | | | | | | 205-RATIO | 105 |
| | Syngen Sterling 0298 | | | | | | | FINAL WT | 1500 |
| | Syngen Sterling 3229 | | | | | | | ADG | 3.55 |
| | S A F Royal Lass 1002 | | | | | | | ADG RATIO | 97 |
| SSA Sterling S916 | | | | | | | | WDA | 2.81 |
| | Oneills Universe 1304 | | | | | | | WDA RATIO | 95 |
| | SSA Lassie S283 | | | | | | | SCRM | 43.5 |
| | S S A Lassie S039 | | | | | | | ADJ YW | 1283 |
| | | | | | | | | PELVIC-HT | 13.0 |
| | | | | | | | | PELVIC-WD | 17.5 |
| PRODUCTION/MATERNAL EPD | | | | | | | | | |
| CED | BW | WW | YW | MCE | MM | MWW | PELVIC AREA | | |
| 5.0 | 2.5 | 39.0 | 67.0 | 9.0 | 17.0 | - | 185.5 | FR SC | 5.4 |
| | | | | | | | | ADJ REA | 17.00 |
| ANGUS \$VALUES INDEXES | | | | | | | | | |
| SW | SF | \$G | \$QG | SYG | SB | SEN | | BF | 0.29 |
| 23.81 | 11.32 | 21.61 | 17.41 | - | 39.82 | 10.58 | | MARB | 4.52 |
| | | | | | | | | % RP | 68.2 |

*Ultrasound date was out scanning age range, actual scan data is reported

| | | | |
|-------------|------|-------|------|
| CARCASS EPD | | | |
| HCW | MARB | BF | REA |
| 13.0 | 0.29 | 0.009 | 0.14 |

GELBVIEH BREED AVERAGE EPD's (for non-parent bulls): CED 105, BW 1.3, WW 41.0, YW 75.0, MCE 104, MM 18.0, MWW N/A, TM 38.0, GL -1.4, STAY 4.0, DtF 3.5, CV 6.74, FM 8.82, HCW 8.30, MARB -0.03, BF N/A, REA 0.10

RED AN BREED AVERAGE EPD's (for non-parent bulls): CED 5.0, BW 0.0, WW 31.0, YW 58.0, MCE 3.0, MM 17.0, MWW N/A, TM 33.0, ST 9.0, HCW N/A, MARB 0.08, BF 0.000, REA 0.08

ULTRASOUND TEST AVERAGE FOR ICA FALL TEST: ADJ-REA 14.9, BF 0.35, MB 4.05

81

Gelbvieh

PB

Polled

83

Red Angus

PB

Polled

| | |
|--|---|
| Linquist Farms 1135 190th St (712) 288-5349 | Ricky Linquist Fonda, IA 50540- |
|--|---|

| | |
|--|---|
| Linquist Farms 1135 190th St (712) 288-5349 | Ricky Linquist Fonda, IA 50540- |
|--|---|

| | | | |
|------------------|--------------------------|-------------|-------|
| 11/20/2008 | Reg# 1110117 | BW | 78 |
| | Black | 205 WT | 740 |
| | | 205-RATIO | 95 |
| | Hyek Black Impulse 1296L | FINAL WT | 1363 |
| | RLKL RL Impulse | ADG | 3.35 |
| | SEAJ Lady Pride 35M1 | ADG RATIO | 92 |
| RLKL RL Mr Kelly | | WDA | 2.97 |
| | BTI Red Alert 2077K | WDA RATIO | 100 |
| | RLKL RL Kelly ET | SCRM | 39.5 |
| | Betz Magic Muffin F64 | ADJ YW | 1363 |
| | | PELVIC-HT | 13.0 |
| | | PELVIC-WD | 17.0 |
| | | PELVIC AREA | 197.5 |
| | | FR SC | 6.8 |
| | | ADJ REA | 13.40 |
| | | BF | 0.09 |
| | | MARB | 1.14 |
| | | % RP | 66.9 |

| PRODUCTION/MATERNAL EPD | | | | | | |
|-------------------------|-----|------|------|-------|------|-----|
| CED | BW | WW | YW | MCE | MM | MWW |
| 99.0 | 3.7 | 45.0 | 78.0 | 102.0 | 11.0 | - |

| TOT | | | | | |
|------|------|------|-----|----|------|
| MAT | Stay | GL | DtF | CV | FM |
| 34.0 | - | -2.0 | - | - | 8.50 |

| CARCASS EPD | | | |
|-------------|------|----|-----|
| HCW | MARB | BF | REA |
| - | - | - | - |

He is homo polled by birth. He has one of the most famous Gelbvieh females (Magic Muffin) as grand dam. He also is full brother to a heifer that I show and did well with. He has adj weaning weight of 740#. He has two of my own top cow in my herd.

| | | | |
|------------|-----------------------|-------------|-------|
| 11/18/2008 | Reg# 1318404 | BW | 72 |
| | Red | 205 WT | 715 |
| | | 205-RATIO | 100 |
| | Lchmn On Target 1016E | FINAL WT | 1511 |
| | Lchmn Bullseye 1379G | ADG | 4.30 |
| | Leachman Dina C1001 | ADG RATIO | 118 |
| RL Bulleye | | WDA | 3.28 |
| | HW Tradition 2325 | WDA RATIO | 111 |
| | COF 201 | SCRM | 43.0 |
| | DND CV Abbey 102 | ADJ YW | 1483 |
| | | PELVIC-HT | 13.0 |
| | | PELVIC-WD | 17.0 |
| | | PELVIC AREA | 197.0 |
| | | FR SC | 5.7 |
| | | ADJ REA | 18.30 |
| | | BF | 0.37 |
| | | MARB | 4.28 |
| | | % RP | 68.9 |

| PRODUCTION/MATERNAL EPD | | | | | | |
|-------------------------|-----|------|------|-----|------|-----|
| CED | BW | WW | YW | MCE | MM | MWW |
| 5.0 | 0.8 | 29.0 | 53.0 | 3.0 | 15.0 | - |

| TOT | |
|------|------|
| MAT | Stay |
| 29.0 | 7.0 |

| CARCASS EPD | | | |
|-------------|------|-------|-------|
| HCW | MARB | BF | REA |
| - | 0.05 | 0.020 | -0.14 |

*Ultrasound date was out scanning age range, actual scan data is reported

He is a Cat 2 because of the white spot on his belly other wise he would of been in my Red Angus show string. He is out of the famous Bulleye bull that was sold from Leachman cattle Company. He should be a calving ease bull with 0.8 BW. He is out of one

Interpreting the Ultrasound Data

The ultrasound traits measured are rump and rib fat, ribeye area, and % intramuscular fat (IMF). The ribeye image is collected between the 12-13th ribs where the rib fat and ribeye area are measured. The IMF images are evaluated between the 12-13th ribs as well, but in longitudinal images instead. In fact, a minimum of four IMF images are collected and the values are averaged. This value would be correlated to the marbling trait for quality grade. The rump fat image is collected between the hooks and the pins of the animal and gives another indication of external body fat.

Ultrasound data can be evaluated similarly to other performance traits. Ultrasound EPD's should be the best indicator of an animal's carcass trait potential. Like other performance traits, find the breed average of each trait and compare that to the animal's EPDs in question. Above average means the offspring are likely to have a higher than average value of a given trait (depending on the accuracy value). To increase values of a certain trait in your herd, choose the higher EPDs for that trait.

Another method of reporting ultrasound data is in ratios, 100 being average. The ratios of any given trait take into consideration the average of the contemporary group (animals of the same sex managed together with the same diet and environment). An animal with a ratio above 100 for a given trait would have a higher than average adjusted value for that trait. Again, if you are looking to increase a trait's value, look for a ratio over 100. Ratios do have the benefit of utilizing ancestral information as EPDs do, but can still be a meaningful tool within the contemporary group.

Age adjusted values or the actual values may be reported in some instances along with EPDs or ratios. Like other performance data, actual values are more of an indication of management or age of an animal. For instance, a 600 pound weaning weight is not an indication of an animal's performance without knowing if 600 pounds is above or below average in its contemporary group. Likewise, ultrasound values, adjusted or actual, do not indicate potential of an animal. It is unfair to compare one ranch to another based on actual or adjusted values. That would only be differentiating management practices or feeding programs. Actual values should be adjusted and adjusted values should be evaluated within contemporary groups.

Ultrasound has become a useful tool in evaluating live animals for carcass traits. The ultrasound measurements correspond to the carcass traits evaluated to determine Yield Grade and Quality Grade. Perhaps the greatest advantage of ultrasound data is that the dams, as well as the sires, can be included in an individual's EPD's.

by Becky Hays, Manager, UltraInsights Processing Lab

**ANGUS BREED AVERAGE EPD's (for non-parent bulls): CED 5.0, BW 2.1, WW 45.0, YW 82.0, MCE 6.0, MM 21.0, MWW N/A,
\$W 24.87, \$F 23.88, \$G 21.98, \$B 41.10, \$EN 2.01, HCW 12.0, MARB 0.33, BF 0.013, REA 0.17
ULTRASOUND TEST AVERAGE FOR ICA ANGUS TEST: ADJ-REA 13.2, BF 0.28, MB 4.58**

1 **Angus** PB Polled

| | |
|---|---|
| Wayne Allen Family 18202 Kiwi Ave (641) 722-3286 | Wayne Allen Bloomfield, IA 52537- |
|---|---|

| | | | | | | | | |
|--------------------------------|---------------------------|-----------|-------|------|-------|-------|-------------|-------|
| 3/16/2009 | Reg# 16437966 | BW | 76 | | | | | |
| | Black | 205 WT | 696 | | | | | |
| | | 205-RATIO | 103 | | | | | |
| | S S Traveler 6807 T510 | FINAL WT | 1218 | | | | | |
| | S S Objective T510 0T26 | ADG | 3.94 | | | | | |
| | S S Miss Rita R011 7RB | ADG RATIO | 105 | | | | | |
| Objective 170A Allen 691 | | WDA | 3.55 | | | | | |
| | Bon View New Design 878 | WDA RATIO | 110 | | | | | |
| | Enchantress 691 Allen 388 | SCRM | 36.0 | | | | | |
| | Enchantress 388 Allen 308 | ADJ YW | 1291 | | | | | |
| | | PELVIC-HT | 14.0 | | | | | |
| PRODUCTION/MATERNAL EPD | | PELVIC-WD | 16.0 | | | | | |
| CED | BW | WW | YW | MCE | MM | MWW | PELVIC AREA | 229.5 |
| 8.0 | 1.5 | 58.0 | 103.0 | 8.0 | 26.0 | - | FR SC | 6.0 |
| | | | | | | | ADJ REA | 15.40 |
| ANGUS \$VALUES INDEXES | | BF | 0.38 | | | | | |
| SW | SF | \$G | \$QG | SYG | SB | SEN | MARB | 3.98 |
| 30.25 | 39.21 | 28.93 | 21.69 | 7.24 | 51.55 | -8.69 | % RP | 67.7 |

| | | | |
|--------------------|------|--------|------|
| CARCASS EPD | | | |
| HCW | MARB | BF | REA |
| 11.0 | 0.41 | -0.002 | 0.26 |

A pedigree stacked with breed leading proven AI sires. Calving ease & high growth EPDs in one package. Excellent dam with good udder qualities and disposition.

2 **Angus** PB Polled

| | |
|---|---|
| Wayne Allen Family 18202 Kiwi Ave (641) 722-3286 | Wayne Allen Bloomfield, IA 52537- |
|---|---|

| | | | | | | | | |
|--------------------------------|--------------------------|-----------|-------|------|-------|--------|-------------|-------|
| 3/17/2009 | Reg# 16437969 | BW | 76 | | | | | |
| | Black | 205 WT | 737 | | | | | |
| | | 205-RATIO | 109 | | | | | |
| | Bon View New Design 1407 | FINAL WT | 1230 | | | | | |
| | LCC New Standard | ADG | 3.94 | | | | | |
| | LCC Sunset K3118 | ADG RATIO | 105 | | | | | |
| New Standard 171A Allen 774 | | WDA | 3.60 | | | | | |
| | Connealy Lead On | WDA RATIO | 112 | | | | | |
| | Blackcap 774 Allen 579 | SCRM | 36.0 | | | | | |
| | Blackcap 579 Allen 304 | ADJ YW | 1328 | | | | | |
| | | PELVIC-HT | 12.0 | | | | | |
| PRODUCTION/MATERNAL EPD | | PELVIC-WD | 16.0 | | | | | |
| CED | BW | WW | YW | MCE | MM | MWW | PELVIC AREA | 197.8 |
| 7.0 | 0.7 | 58.0 | 109.0 | 8.0 | 31.0 | - | FR SC | 7.2 |
| | | | | | | | ADJ REA | 14.10 |
| ANGUS \$VALUES INDEXES | | BF | 0.30 | | | | | |
| SW | SF | \$G | \$QG | SYG | SB | SEN | MARB | 5.79 |
| 29.85 | 45.52 | 28.93 | 23.91 | 5.02 | 58.87 | -15.29 | % RP | 66.8 |

| | | | |
|--------------------|------|-------|------|
| CARCASS EPD | | | |
| HCW | MARB | BF | REA |
| 19.0 | 0.48 | 0.001 | 0.23 |

A pedigree stacked with breed leading proven AI sires. Calving ease & high growth EPDs in one package. Excellent dam with good udder qualities and disposition.

4 **Angus** PB Polled

| | |
|---|--|
| R&C Angus P.O. Box 110, 18269 Military Rd (319) 465-5058 | Ruhl & Cheryl Barker Monticello, IA 52310-0110 |
|---|--|

| | | | | | | | | |
|--------------------------------|-------------------------|-----------|------|-------|-------|------|-------------|-------|
| 2/8/2009 | Reg# 16476180 | BW | 88 | | | | | |
| | Black | 205 WT | 750 | | | | | |
| | | 205-RATIO | 101 | | | | | |
| | Sitz Traveler 8180 | FINAL WT | 1271 | | | | | |
| | S A V 8180 Traveler 004 | ADG | 4.00 | | | | | |
| | Boyd Forever Lady 8003 | ADG RATIO | 107 | | | | | |
| R&C Master Traveler106K-9106 | | WDA | 3.35 | | | | | |
| | WK Appeal | WDA RATIO | 104 | | | | | |
| | R&C Lady Appeal 106K | SCRM | 41.0 | | | | | |
| | Master Lady 563-9 | ADJ YW | 1227 | | | | | |
| | | PELVIC-HT | 12.0 | | | | | |
| PRODUCTION/MATERNAL EPD | | PELVIC-WD | 16.0 | | | | | |
| CED | BW | WW | YW | MCE | MM | MWW | PELVIC AREA | 188.5 |
| 2.0 | 3.3 | 42.0 | 76.0 | 4.0 | 22.0 | - | FR SC | 5.9 |
| | | | | | | | ADJ REA | 13.80 |
| ANGUS \$VALUES INDEXES | | BF | 0.30 | | | | | |
| SW | SF | \$G | \$QG | SYG | SB | SEN | MARB | 4.31 |
| 21.13 | 18.59 | 3.03 | 8.30 | -5.27 | 22.54 | 1.65 | % RP | 66.1 |

| | | | |
|--------------------|------|-------|------|
| CARCASS EPD | | | |
| HCW | MARB | BF | REA |
| 13.0 | 0.07 | 0.061 | 0.02 |

Dam's production: BWR 8/99, WW 8/102, 5 calves with %IMF @107, Ribeye @ 99, Fat @102. SAV 8180 Traveler 004 is a multi-purpose sire unsurpassed for fleshing ease, fertility and maternal traits. This bull has balanced carcass traits and production EPDs while gaining 4 lb/day on test. His dam is a 10 yr old, easy fleshing cow with a beautiful udder.

5 **Angus** PB Polled

| | |
|---|--|
| R&C Angus P.O. Box 110, 18269 Military Rd (319) 465-5058 | Ruhl & Cheryl Barker Monticello, IA 52310-0110 |
|---|--|

| | | | | | | | | |
|--------------------------------|----------------------------|-----------|-------|------|-------|------|-------------|-------|
| 2/14/2009 | Reg# 16480560 | BW | 89 | | | | | |
| | Black | 205 WT | 761 | | | | | |
| | | 205-RATIO | 111 | | | | | |
| | G A R Grid Maker | FINAL WT | 1302 | | | | | |
| | TC Grid Topper 355 | ADG | 3.99 | | | | | |
| | TC Pride 8067 | ADG RATIO | 106 | | | | | |
| R&C Gridtopper 810K-9850 | | WDA | 3.49 | | | | | |
| | S A F Fame | WDA RATIO | 109 | | | | | |
| | R&C Lady Blackbird 810K | SCRM | 46.0 | | | | | |
| | Dameron Lady Blackbird 810 | ADJ YW | 1276 | | | | | |
| | | PELVIC-HT | 12.0 | | | | | |
| PRODUCTION/MATERNAL EPD | | PELVIC-WD | 16.0 | | | | | |
| CED | BW | WW | YW | MCE | MM | MWW | PELVIC AREA | 190.0 |
| 4.0 | 3.7 | 60.0 | 96.0 | 9.0 | 17.0 | - | FR SC | 6.5 |
| | | | | | | | ADJ REA | 14.10 |
| ANGUS \$VALUES INDEXES | | BF | 0.19 | | | | | |
| SW | SF | \$G | \$QG | SYG | SB | SEN | MARB | 4.47 |
| 27.79 | 31.28 | 18.15 | 10.49 | 7.66 | 36.36 | 2.35 | % RP | 67.3 |

| | | | |
|--------------------|------|--------|------|
| CARCASS EPD | | | |
| HCW | MARB | BF | REA |
| 8.0 | 0.12 | -0.003 | 0.25 |

Dam's production: BWR 7/100, WW 7/111 - a Pathfinder Cow & donor cow with 12 calves with %IMF @ 99, Ribeye @ 104, Fat @ 101. 810K is a 10 yr old with a beautiful udder & has raised several champion bulls & top herd sires. TC Gridtopper calves are super stout with high performance & this bull is no exception with balanced carcass & production traits gaining 3.99 lb/day on test. Buy with confidence.

**ANGUS BREED AVERAGE EPD's (for non-parent bulls): CED 5.0, BW 2.1, WW 45.0, YW 82.0, MCE 6.0, MM 21.0, MWW N/A, \$W 24.87, \$F 23.88, \$G 21.98, \$B 41.10, \$EN 2.01, HCW 12.0, MARB 0.33, BF 0.013, REA 0.17
ULTRASOUND TEST AVERAGE FOR ICA ANGUS TEST: ADJ-REA 13.2, BF 0.28, MB 4.58**

7 **Angus** PB Polled

| | |
|--|---|
| Spencer Grove Farms 4717 Spencers Grove Rd | Larry Bridgewater Walker, IA 52352- |
|--|---|

| | | | | | | | | |
|-------------------------|-------------------------|-----------|-------|------|-------|------|-------------|-------|
| 1/12/2009 | Reg# 16391042 | BW | 73 | | | | | |
| | Black | 205 WT | 686 | | | | | |
| | | 205-RATIO | 101 | | | | | |
| | S A V 8180 Traveler 004 | FINAL WT | 1276 | | | | | |
| Zap | | ADG | 3.88 | | | | | |
| | Reich Miss Driver 460 | ADG RATIO | 104 | | | | | |
| G C zap 952 | | WDA | 3.14 | | | | | |
| | Woodhill Fame 162-289 | WDA RATIO | 98 | | | | | |
| | G C Queen 344 | SCRM | 40.0 | | | | | |
| | GC Queen 131 | ADJ YW | 1155 | | | | | |
| | | PELVIC-HT | 13.0 | | | | | |
| PRODUCTION/MATERNAL EPD | | PELVIC-WD | 16.0 | | | | | |
| CED | BW | WW | YW | MCE | MM | MWW | PELVIC AREA | 197.8 |
| 6.0 | 1.7 | 58.0 | 100.0 | 8.0 | 14.0 | - | FR SC | 5.7 |
| | | | | | | | ADJ REA | 13.70 |
| ANGUS \$VALUES INDEXES | | BF | 0.32 | | | | | |
| \$W | \$F | \$G | \$QG | \$YG | \$B | \$EN | MARB | 3.35 |
| 27.82 | 36.12 | 11.22 | 10.49 | 0.73 | 37.36 | 3.10 | % RP | 65.7 |

| CARCASS EPD | | | |
|-------------|------|-------|------|
| HCW | MARB | BF | REA |
| 17.0 | 0.12 | 0.048 | 0.31 |

Zap calves come easy and really grow. We have used him some on our bigger heifers. Carcass traits are very impressive.

8 **Angus** PB Polled

| | |
|---|--|
| Deppe Angus 2004 Casper Ave (319) 352-3259 | Dennis & Jennifer Deppe Waverly, IA 50677- |
|---|--|

| | | | | | | | | |
|--------------------------|----------------------------|-----------|-------|------|-------|-------|-------------|-------|
| 1/30/2009 | Reg# 16455927 | BW | 74 | | | | | |
| | Black | 205 WT | 692 | | | | | |
| | | 205-RATIO | 106 | | | | | |
| | Circle A Adventure 0124 | FINAL WT | 1186 | | | | | |
| Oneills Expedition | | ADG | 3.60 | | | | | |
| | Oneills Delia 715 | ADG RATIO | 96 | | | | | |
| Deppe 732 Expedition 907 | | WDA | 3.06 | | | | | |
| | Mill Coulee Rain Maker 206 | WDA RATIO | 95 | | | | | |
| | Mill Coulee Barbara K 732 | SCRM | 36.5 | | | | | |
| | Mill Coulee Winchester 610 | ADJ YW | 1140 | | | | | |
| | | PELVIC-HT | 13.0 | | | | | |
| PRODUCTION/MATERNAL EPD | | PELVIC-WD | 16.0 | | | | | |
| CED | BW | WW | YW | MCE | MM | MWW | PELVIC AREA | 202.3 |
| 3.0 | 1.3 | 47.0 | 81.0 | 8.0 | 28.0 | - | FR SC | 6.1 |
| | | | | | | | ADJ REA | 13.10 |
| ANGUS \$VALUES INDEXES | | BF | 0.24 | | | | | |
| \$W | \$F | \$G | \$QG | \$YG | \$B | \$EN | MARB | 3.18 |
| 29.55 | 21.51 | 21.42 | 12.14 | 9.28 | 39.06 | -4.13 | % RP | 66.5 |

| CARCASS EPD | | | |
|-------------|------|--------|------|
| HCW | MARB | BF | REA |
| 10.0 | 0.16 | -0.044 | 0.09 |

Dam's Production: 11 BWR 92, 11 NR 111, 8 YWR 104. This son of O'Neills Expedition combines calving ease, thickness & fleshing ability with a super disposition & structural correctness. His donor dam has consistently produced herd bull sires & female replacements for over a decade. Recommended for use on heifers. AMF, NHF

9 **Angus** PB Polled

| | |
|---|--|
| Deppe Angus 2004 Casper Ave (319) 352-3259 | Dennis & Jennifer Deppe Waverly, IA 50677- |
|---|--|

| | | | | | | | | |
|---------------------------|------------------------|-----------|----------|------|-------|------|-------------|-------|
| 2/3/2009 | Reg# 16470046 | BW | 78 | | | | | |
| | Black | 205 WT | 695 | | | | | |
| | | 205-RATIO | 100 (ET) | | | | | |
| | G A R Precision 1680 | FINAL WT | 1237 | | | | | |
| C A Future Direction 5321 | | ADG | 3.86 | | | | | |
| | C A Miss Power Fix 308 | ADG RATIO | 103 | | | | | |
| Deppe 202 Direction 912 | | WDA | 3.22 | | | | | |
| | G A R Precision 1680 | WDA RATIO | 100 | | | | | |
| | LCR Precision 202 | SCRM | 36.0 | | | | | |
| | G A R Ext 2104 | ADJ YW | 1180 | | | | | |
| | | PELVIC-HT | 13.0 | | | | | |
| PRODUCTION/MATERNAL EPD | | PELVIC-WD | 16.0 | | | | | |
| CED | BW | WW | YW | MCE | MM | MWW | PELVIC AREA | 203.3 |
| 7.0 | 2.5 | 40.0 | 73.0 | 8.0 | 25.0 | - | FR SC | 5.9 |
| | | | | | | | ADJ REA | 14.80 |
| ANGUS \$VALUES INDEXES | | BF | 0.27 | | | | | |
| \$W | \$F | \$G | \$QG | \$YG | \$B | \$EN | MARB | 5.79 |
| 25.20 | 16.50 | 26.95 | 23.64 | 3.31 | 51.26 | 2.11 | % RP | 67.9 |

| CARCASS EPD | | | |
|-------------|------|-------|------|
| HCW | MARB | BF | REA |
| 20.0 | 0.47 | 0.026 | 0.33 |

This Lagrand Angus Ranch bred embryo transplant bull has a great combination of ribeye area and IMF. His donor dam is a flush sister to the multiple million dollar producer, GAR Precision 2536. He is stacked to provide calving ease, carcass & maternal excellence. Recommended for use on heifers. AMF, NHF

10 **Angus** PB Polled

| | |
|---|--|
| Deppe Angus 2004 Casper Ave (319) 352-3259 | Dennis & Jennifer Deppe Waverly, IA 50677- |
|---|--|

| | | | | | | | | |
|--------------------------|-----------------------------|-----------|----------|------|-------|-------|-------------|-------|
| 2/28/2009 | Reg# 16456271 | BW | 94 | | | | | |
| | Black | 205 WT | 796 | | | | | |
| | | 205-RATIO | 100 (ET) | | | | | |
| | Circle A Adventure 0124 | FINAL WT | 1353 | | | | | |
| Oneills Expedition | | ADG | 4.42 | | | | | |
| | Oneills Delia 715 | ADG RATIO | 118 | | | | | |
| Deppe 619 Expedition 922 | | WDA | 3.77 | | | | | |
| | Rito 3M2 of 5H11 GT Maximum | WDA RATIO | 117 | | | | | |
| | Mill Coulee Blackbird 619 | SCRM | 37.5 | | | | | |
| | Mill Coulee Blackbird 101 | ADJ YW | 1394 | | | | | |
| | | PELVIC-HT | 13.0 | | | | | |
| PRODUCTION/MATERNAL EPD | | PELVIC-WD | 16.0 | | | | | |
| CED | BW | WW | YW | MCE | MM | MWW | PELVIC AREA | 209.5 |
| -1.0 | 4.4 | 48.0 | 91.0 | 5.0 | 24.0 | - | FR SC | 7.1 |
| | | | | | | | ADJ REA | 15.40 |
| ANGUS \$VALUES INDEXES | | BF | 0.35 | | | | | |
| \$W | \$F | \$G | \$QG | \$YG | \$B | \$EN | MARB | 4.15 |
| 20.06 | 30.93 | 22.76 | 13.39 | 9.37 | 49.60 | -3.53 | % RP | 66.9 |

| CARCASS EPD | | | |
|-------------|------|--------|------|
| HCW | MARB | BF | REA |
| 20.0 | 0.19 | -0.026 | 0.39 |

Dam's Production: 10 BWR 99, 10 NR 125, 5 YWR 122. This stout made growth, maternal & carcass bull sired by O'Neills Expedition will add pounds to your calves and provide longevity for many years. His 14 year old dam is the very popular Blackbird donor that is known for creating sons & daughters with muscle and grow. AMF, NHF

**ANGUS BREED AVERAGE EPD's (for non-parent bulls): CED 5.0, BW 2.1, WW 45.0, YW 82.0, MCE 6.0, MM 21.0, MWW N/A, \$W 24.87, \$F 23.88, \$G 21.98, \$B 41.10, \$EN 2.01, HCW 12.0, MARB 0.33, BF 0.013, REA 0.17
ULTRASOUND TEST AVERAGE FOR ICA ANGUS TEST: ADJ-REA 13.2, BF 0.28, MB 4.58**

12 **Angus** PB Polled

| | |
|--|--|
| Foster Angus 24932 580th (641) 658-2478 | Craig Foster Exline, IA 52555- |
|--|--|

| | | | | | | | |
|-------------------------|-----------------------|-----------|-------|-------|-------|------|-------------|
| 3/3/2009 | Reg# 16419542 | BW | 80 | | | | |
| | Black | 205 WT | N/A | | | | |
| | | 205-RATIO | 115 | | | | |
| | KCF Bennett Total | FINAL WT | 1104 | | | | |
| | CF Total 770 | ADG | 4.14 | | | | |
| | Miss CF Direction 525 | ADG RATIO | 110 | | | | |
| | CF Total 914 | WDA | 3.10 | | | | |
| | VDAR Lucys Boy | WDA RATIO | 96 | | | | |
| | Miss CF Lucy 004 | SCRM | 33.0 | | | | |
| | CF Rita 813 | ADJ YW | 1130 | | | | |
| | | PELVIC-HT | 13.0 | | | | |
| | | PELVIC-WD | 15.5 | | | | |
| PRODUCTION/MATERNAL EPD | | | | | | | |
| CED | BW | WW | YW | MCE | MM | MWW | PELVIC AREA |
| 7.0 | 0.1 | 45.0 | 82.0 | 6.0 | 17.0 | - | 203.8 |
| | | | | | | | FR SC |
| | | | | | | | 5.9 |
| | | | | | | | ADJ REA |
| | | | | | | | 11.60 |
| ANGUS \$VALUES INDEXES | | | | | | | BF |
| SW | SF | \$G | \$QG | SYG | SB | SEN | MARB |
| 27.08 | 23.21 | 14.11 | 15.47 | -1.36 | 36.88 | 6.08 | 4.68 |
| | | | | | | | % RP |
| | | | | | | | 65.1 |

| | | | |
|-------------|------|-------|-------|
| CARCASS EPD | | | |
| HCW | MARB | BF | REA |
| 16.0 | 0.24 | 0.029 | -0.01 |

A calving ease bull that should make good replacement females.

14 **Angus** PB Polled

| | |
|--|---|
| Heartland Angus 307 Mahaska Dr (319) 337-6845 | William Gay, DVM Iowa City, IA 52246- |
|--|---|

| | | | | | | | |
|-------------------------|-----------------------|-----------|-------|------|-------|------|-------------|
| 3/20/2009 | Reg# 16392890 | BW | 80 | | | | |
| | Black | 205 WT | N/A | | | | |
| | | 205-RATIO | N/A | | | | |
| | S A F Focus of ER | FINAL WT | 1060 | | | | |
| | Mytty in Focus | ADG | 3.75 | | | | |
| | Mytty Countess 906 | ADG RATIO | 100 | | | | |
| | Heartland Focus 904 | WDA | 3.13 | | | | |
| | Rito 2V1 of 2536 1407 | WDA RATIO | 97 | | | | |
| | 2V1 Lady Eve 702 | SCRM | 35.0 | | | | |
| | Captains Lady Eve 710 | ADJ YW | 1195 | | | | |
| | | PELVIC-HT | 13.0 | | | | |
| | | PELVIC-WD | 15.0 | | | | |
| PRODUCTION/MATERNAL EPD | | | | | | | |
| CED | BW | WW | YW | MCE | MM | MWW | PELVIC AREA |
| 10.0 | -0.2 | 49.0 | 93.0 | 10.0 | 18.0 | - | 201.5 |
| | | | | | | | FR SC |
| | | | | | | | 5.7 |
| | | | | | | | ADJ REA |
| | | | | | | | 13.50 |
| ANGUS \$VALUES INDEXES | | | | | | | BF |
| SW | SF | \$G | \$QG | SYG | SB | SEN | MARB |
| 26.87 | 32.16 | 22.83 | 18.12 | 4.71 | 46.76 | 1.82 | 3.97 |
| | | | | | | | % RP |
| | | | | | | | 67.7 |

| | | | |
|-------------|------|-------|------|
| CARCASS EPD | | | |
| HCW | MARB | BF | REA |
| 15.0 | 0.31 | 0.012 | 0.24 |

Calving ease, moderate frame. Sired by Mytty in Focus, the most popular sire in the angus breed in 2008 and 2009. Will produce calves that are born easy, get going fast, look good & perform well.

17 **Angus** PB Polled

| | |
|--|--|
| Jacobs Angus 18442 Military Rd (319) 465-5058 | Eleanor Jacobs Monticello, IA 52310- |
|--|--|

| | | | | | | | |
|-------------------------|-------------------------|-----------|-------|------|-------|-------|-------------|
| 3/4/2009 | Reg# 16518449 | BW | 86 | | | | |
| | Black | 205 WT | 721 | | | | |
| | | 205-RATIO | 115 | | | | |
| | S A V Pathfinder 3134 | FINAL WT | 1157 | | | | |
| | S A V Legacy 5216 | ADG | 4.15 | | | | |
| | S A V Rosetta 3350 | ADG RATIO | 111 | | | | |
| | Jacobs Legacy 718T-9718 | WDA | 3.26 | | | | |
| | 044 Strongland 10K | WDA RATIO | 101 | | | | |
| | Jacobs Norma 180- 718T | SCRM | 36.0 | | | | |
| | PGA Norma 180 | ADJ YW | 1247 | | | | |
| | | PELVIC-HT | 14.0 | | | | |
| | | PELVIC-WD | 16.0 | | | | |
| PRODUCTION/MATERNAL EPD | | | | | | | |
| CED | BW | WW | YW | MCE | MM | MWW | PELVIC AREA |
| 2.0 | 3.3 | 68.0 | 94.0 | 4.0 | 24.0 | - | 226.5 |
| | | | | | | | FR SC |
| | | | | | | | 6.5 |
| | | | | | | | ADJ REA |
| | | | | | | | 13.30 |
| ANGUS \$VALUES INDEXES | | | | | | | BF |
| SW | SF | \$G | \$QG | SYG | SB | SEN | MARB |
| 35.81 | 26.22 | 20.52 | 14.59 | 5.93 | 40.97 | -3.92 | 4.21 |
| | | | | | | | % RP |
| | | | | | | | 66.8 |

| | | | |
|-------------|------|-------|------|
| CARCASS EPD | | | |
| HCW | MARB | BF | REA |
| 12.0 | 0.22 | 0.019 | 0.35 |

From a first-calf heifer out of "Strongland," who gives high growth & performance in a moderate package. SAV Legacy is a moderate framed well muscled calving ease bull. This bull is in the top 2% for WW, top 15% for YW, top 18% Ribeye, and top 1% for \$W in the Angus breed. He get his calves to market faster.

19 **Angus** PB Polled

| | |
|---|---|
| Kaefrings Parkview Knoll Angus 410 E. 10th St (563) 886-2397 | Fred Kaefring Tipton, IA 52772- |
|---|---|

| | | | | | | | |
|-------------------------|-----------------------------|-----------|-------|------|-------|--------|-------------|
| 1/23/2009 | Reg# 16427820 | BW | 79 | | | | |
| | Black | 205 WT | 704 | | | | |
| | | 205-RATIO | 110 | | | | |
| | Bon View New Design 208 | FINAL WT | 1332 | | | | |
| | TC Total 410 | ADG | 3.88 | | | | |
| | TC Erica Eileen 2047 | ADG RATIO | 104 | | | | |
| | KPKA Total 59 | WDA | 3.37 | | | | |
| | Hyline Right Time 338 | WDA RATIO | 105 | | | | |
| | K Parkview Black Erica 216 | SCRM | 40.0 | | | | |
| | K A E F Parakview Blk Erica | ADJ YW | 1277 | | | | |
| | | PELVIC-HT | 13.0 | | | | |
| | | PELVIC-WD | 16.0 | | | | |
| PRODUCTION/MATERNAL EPD | | | | | | | |
| CED | BW | WW | YW | MCE | MM | MWW | PELVIC AREA |
| 4.0 | 2.9 | 62.0 | 108.0 | 5.0 | 28.0 | - | 200.5 |
| | | | | | | | FR SC |
| | | | | | | | 6.0 |
| | | | | | | | ADJ REA |
| | | | | | | | 13.70 |
| ANGUS \$VALUES INDEXES | | | | | | | BF |
| SW | SF | \$G | \$QG | SYG | SB | SEN | MARB |
| 28.87 | 42.82 | 27.93 | 20.60 | 7.33 | 52.30 | -12.08 | 5.18 |
| | | | | | | | % RP |
| | | | | | | | 64.8 |

| | | | |
|-------------|------|-------|------|
| CARCASS EPD | | | |
| HCW | MARB | BF | REA |
| 12.0 | 0.38 | 0.002 | 0.32 |

This Total son has stood out since birth. He is thick & deep. His dam is a top producing cow with 2 at 112. His dam's first calf was our top indexing heifer last year & she is retained in the herd.

**ANGUS BREED AVERAGE EPD's (for non-parent bulls): CED 5.0, BW 2.1, WW 45.0, YW 82.0, MCE 6.0, MM 21.0, MWW N/A,
\$W 24.87, \$F 23.88, \$G 21.98, \$B 41.10, \$EN 2.01, HCW 12.0, MARB 0.33, BF 0.013, REA 0.17
ULTRASOUND TEST AVERAGE FOR ICA ANGUS TEST: ADJ-REA 13.2, BF 0.28, MB 4.58**

20 **Angus** PB Polled

Kaefring Parkview Knoll Angus Mike Kaefring
900 Cedar Valley Rd Tipton, IA 52772-
(563) 886-6909

| | | | | | | | |
|--------------------------------|----------------------------|-----------|------|------|-------|------|-------------|
| 2/8/2009 | Reg# 16440511 | BW | 81 | | | | |
| | Black | 19 WT | 584 | | | | |
| | | 19-RATIO | 91 | | | | |
| | S A Neutron 377 | FINAL WT | 1231 | | | | |
| | H&K Neutron 377 Z58 | ADG | 4.41 | | | | |
| | Blueblood Lady Ellston V97 | ADG RATIO | 118 | | | | |
| | KPKA Neutron 189 | WDA | 3.25 | | | | |
| | P V F New Horizon 001 | WDA RATIO | 101 | | | | |
| | ESP Lady 0501 | SCRM | 36.0 | | | | |
| | WAF Lady 3035 | ADJ YW | 1209 | | | | |
| | | PELVIC-HT | 13.0 | | | | |
| | | PELVIC-WD | 16.0 | | | | |
| PRODUCTION/MATERNAL EPD | | | | | | | |
| CED | BW | WW | YW | MCE | MM | MWW | PELVIC AREA |
| 1.0 | 4.0 | 47.0 | 88.0 | 4.0 | 15.0 | - | 204.5 |
| ANGUS \$VALUES INDEXES | | | | | | | |
| SW | SF | \$G | \$QG | SYG | SB | SEN | BF |
| 19.34 | 28.33 | 11.15 | 7.38 | 3.77 | 29.54 | 5.98 | 0.22 |
| | | | | | | | MARB |
| | | | | | | | 3.48 |
| | | | | | | | % RP |
| | | | | | | | 64.6 |

| | | | |
|--------------------|------|-------|------|
| CARCASS EPD | | | |
| HCW | MARB | BF | REA |
| 9.0 | 0.05 | 0.022 | 0.17 |

A high gaining bull from a big volume dam. His sire was a past top-selling bull & has produced several top bulls in the ICA tests. He will give you some growth and performance!

21 **Angus** PB Polled

Kaefring Parkview Knoll Angus Mike Kaefring
900 Cedar Valley Rd Tipton, IA 52772-
(563) 886-6909

| | | | | | | | |
|--------------------------------|------------------------------|-----------|------|-------|-------|------|-------------|
| 2/20/2009 | Reg# 16430230 | BW | 80 | | | | |
| | Black | 205 WT | 720 | | | | |
| | | 205-RATIO | 113 | | | | |
| | S A Neutron 377 | FINAL WT | 1389 | | | | |
| | H&K Neutron 377 Z58 | ADG | 4.09 | | | | |
| | Blueblood Lady Ellston V97 | ADG RATIO | 109 | | | | |
| | KPKA Nitro 19 | WDA | 3.78 | | | | |
| | R R Scotchcap 9440 | WDA RATIO | 118 | | | | |
| | K A E F Parkview Blk Mscf680 | SCRM | 36.0 | | | | |
| | Black Mischief O A 33 | ADJ YW | 1382 | | | | |
| | | PELVIC-HT | 13.5 | | | | |
| | | PELVIC-WD | 16.0 | | | | |
| PRODUCTION/MATERNAL EPD | | | | | | | |
| CED | BW | WW | YW | MCE | MM | MWW | PELVIC AREA |
| 1.0 | 3.9 | 51.0 | 87.0 | 8.0 | 18.0 | - | 215.5 |
| ANGUS \$VALUES INDEXES | | | | | | | |
| SW | SF | \$G | \$QG | SYG | SB | SEN | BF |
| 23.63 | 25.82 | 6.24 | 9.61 | -3.37 | 37.77 | 3.67 | 0.28 |
| | | | | | | | MARB |
| | | | | | | | 3.59 |
| | | | | | | | % RP |
| | | | | | | | 63.8 |

| | | | |
|--------------------|------|-------|------|
| CARCASS EPD | | | |
| HCW | MARB | BF | REA |
| 31.0 | 0.10 | 0.034 | 0.14 |

Here is our top weaning weight bull out of the top indexing cow in the herd with a 6 at 115. If you are looking for a good, high performance bull, he will work. He has the herd bull look!

22 **Angus** PB Polled

Kaefring Parkview Knoll Angus Seth Kaefring
900 Cedar Valley Rd Tipton, IA 52772-
(563) 886-6909

| | | | | | | | |
|--------------------------------|---------------------------|-----------|------|------|-------|------|-------------|
| 1/13/2009 | Reg# 16430240 | BW | 72 | | | | |
| | Black | 205 WT | 629 | | | | |
| | | 205-RATIO | 98 | | | | |
| | B C C Bushwacker 41-93 | FINAL WT | 1263 | | | | |
| | KPKA Bushwacker 127 | ADG | 4.10 | | | | |
| | KAEF Parkview Keymura 104 | ADG RATIO | 109 | | | | |
| | KPKA Bushwacker I | WDA | 3.12 | | | | |
| | Leachman Right Time | WDA RATIO | 97 | | | | |
| | KAEF Parkview Barbara 113 | SCRM | 39.0 | | | | |
| | Curtis Barbara 21E | ADJ YW | 1145 | | | | |
| | | PELVIC-HT | 13.0 | | | | |
| | | PELVIC-WD | 16.0 | | | | |
| PRODUCTION/MATERNAL EPD | | | | | | | |
| CED | BW | WW | YW | MCE | MM | MWW | PELVIC AREA |
| 7.0 | 1.0 | 43.0 | 77.0 | 8.0 | 20.0 | - | 198.0 |
| ANGUS \$VALUES INDEXES | | | | | | | |
| SW | SF | \$G | \$QG | SYG | SB | SEN | BF |
| 27.14 | 19.17 | 10.25 | 4.54 | 5.71 | 15.92 | 4.93 | 0.25 |
| | | | | | | | MARB |
| | | | | | | | 3.97 |
| | | | | | | | % RP |
| | | | | | | | 65.9 |

| | | | |
|--------------------|-------|-------|------|
| CARCASS EPD | | | |
| HCW | MARB | BF | REA |
| -2.0 | -0.01 | 0.019 | 0.13 |

This is a thick bull out of one of the top cows in the herd. The dam is a big volumed super uddered cow from Right Time. He will add some pounds & calving ease.

24 **Angus** PB Polled

DeKap Angus Farm Duane L. Kruse Family
21908 Georgetown Rd Lanark, IL 61046-
(815) 493-2663

| | | | | | | | |
|--------------------------------|------------------------------|-----------|------|------|-------|-------|-------------|
| 3/2/2009 | Reg# 16473684 | BW | 69 | | | | |
| | Black | 205 WT | 764 | | | | |
| | | 205-RATIO | 108 | | | | |
| | Hero 6267 of R R 2418 | FINAL WT | 1253 | | | | |
| | H A Image Maker 0415 | ADG | 4.37 | | | | |
| | H A Rito Blackcap 9038 | ADG RATIO | 116 | | | | |
| | DeKap JuanImageMaker 139 | WDA | 3.51 | | | | |
| | Hyline Right Way 781 | WDA RATIO | 109 | | | | |
| | DeKap RitWay Juanerra 757 | SCRM | 35.0 | | | | |
| | DeKap Universal Juanerra 404 | ADJ YW | 1340 | | | | |
| | | PELVIC-HT | 12.0 | | | | |
| | | PELVIC-WD | 16.0 | | | | |
| PRODUCTION/MATERNAL EPD | | | | | | | |
| CED | BW | WW | YW | MCE | MM | MWW | PELVIC AREA |
| - | 1.4 | 60.0 | 98.0 | - | 28.0 | - | 194.0 |
| ANGUS \$VALUES INDEXES | | | | | | | |
| SW | SF | \$G | \$QG | SYG | SB | SEN | BF |
| 33.97 | 33.29 | 14.31 | 8.30 | 6.01 | 36.15 | -8.65 | 0.33 |
| | | | | | | | MARB |
| | | | | | | | 4.62 |
| | | | | | | | % RP |
| | | | | | | | 64.3 |

| | | | |
|--------------------|------|--------|------|
| CARCASS EPD | | | |
| HCW | MARB | BF | REA |
| 12.0 | 0.07 | -0.017 | 0.05 |

**ANGUS BREED AVERAGE EPD's (for non-parent bulls): CED 5.0, BW 2.1, WW 45.0, YW 82.0, MCE 6.0, MM 21.0, MWW N/A, \$W 24.87, \$F 23.88, \$G 21.98, \$B 41.10, \$EN 2.01, HCW 12.0, MARB 0.33, BF 0.013, REA 0.17
ULTRASOUND TEST AVERAGE FOR ICA ANGUS TEST: ADJ-REA 13.2, BF 0.28, MB 4.58**

25 **Angus** PB Polled

| | |
|--|---|
| DeKap Angus Farm 21908 Georgetown Rd (815) 493-2663 | Duane L. Kruse Family Lanark, IL 61046- |
|--|---|

| | | | | | | | |
|--------------------------------|---------------------------|-----------|-------|------|-------|-------|-------------|
| 3/2/2009 | Reg# 16445406 | BW | 78 | | | | |
| | Black | 205 WT | 790 | | | | |
| | | 205-RATIO | 111 | | | | |
| | Rito 112 of 2536 Rito 616 | FINAL WT | 1267 | | | | |
| | TC Rito 416 | ADG | 4.01 | | | | |
| | TC Chloe 2056 | ADG RATIO | 107 | | | | |
| DeKap EF Rito 159 | | WDA | 3.55 | | | | |
| | Connealy Lead On | WDA RATIO | 110 | | | | |
| | Dekap Leading Effie 237 | SCRM | 37.0 | | | | |
| | De Kap Timely Effie 203 | ADJ YW | 1354 | | | | |
| | | PELVIC-HT | 13.5 | | | | |
| | | PELVIC-WD | 16.5 | | | | |
| PRODUCTION/MATERNAL EPD | | | | | | | |
| CED | BW | WW | YW | MCE | MM | MWW | PELVIC AREA |
| 7.0 | 1.5 | 55.0 | 97.0 | 8.0 | 27.0 | - | 224.8 |
| | | | | | | | FR SC |
| | | | | | | | 6.9 |
| | | | | | | | ADJ REA |
| | | | | | | | 14.40 |
| | | | | | | | BF |
| | | | | | | | 0.35 |
| ANGUS \$VALUES INDEXES | | | | | | | |
| \$W | \$F | \$G | \$QG | \$YG | \$B | \$EN | MARB |
| 30.89 | 33.23 | 28.98 | 21.69 | 7.29 | 47.73 | -7.08 | 5.71 |
| | | | | | | | % RP |
| | | | | | | | 66.3 |

| | | | |
|--------------------|------|--------|------|
| CARCASS EPD | | | |
| HCW | MARB | BF | REA |
| 8.0 | 0.41 | -0.001 | 0.23 |

27 **Angus** PB Polled

| | |
|---|--------------------------------------|
| Midnight Shadow Angus Farm 2449 X Ave (515) 436-7783 | Jack Lint Perry, IA 50220- |
|---|--------------------------------------|

| | | | | | | | |
|--------------------------------|--------------------------|-----------|-------|------|-------|-------|-------------|
| 1/27/2009 | Reg# 16412489 | BW | 78 | | | | |
| | Black | 205 WT | 685 | | | | |
| | | 205-RATIO | 105 | | | | |
| | Triple B L Edition 814 | FINAL WT | 1263 | | | | |
| | Triple B R 814 1252 | ADG | 4.27 | | | | |
| | Triple B R Black Gem 688 | ADG RATIO | 114 | | | | |
| M S Triple Star 609 | | WDA | 3.23 | | | | |
| | S F Foresight | WDA RATIO | 100 | | | | |
| | Midnight Shadow 1006 | SCRM | 37.5 | | | | |
| | Midnight Shadow 1203 | ADJ YW | 1224 | | | | |
| | | PELVIC-HT | 12.0 | | | | |
| | | PELVIC-WD | 16.5 | | | | |
| PRODUCTION/MATERNAL EPD | | | | | | | |
| CED | BW | WW | YW | MCE | MM | MWW | PELVIC AREA |
| 5.0 | 2.1 | 50.0 | 83.0 | 6.0 | 24.0 | - | 191.5 |
| | | | | | | | FR SC |
| | | | | | | | 6.5 |
| | | | | | | | ADJ REA |
| | | | | | | | 12.00 |
| | | | | | | | BF |
| | | | | | | | 0.32 |
| ANGUS \$VALUES INDEXES | | | | | | | |
| \$W | \$F | \$G | \$QG | \$YG | \$B | \$EN | MARB |
| 29.42 | 22.31 | 15.35 | 12.14 | 3.21 | 41.14 | -0.53 | 4.76 |
| | | | | | | | % RP |
| | | | | | | | 63.7 |

| | | | |
|--------------------|------|-------|------|
| CARCASS EPD | | | |
| HCW | MARB | BF | REA |
| 21.0 | 0.16 | 0.000 | 0.11 |

Dam's production: 2 BWR 99, 2 WWR 110. 7/8 brother to lot 28. Will work on first calf heifers. This same cow (1006) had a 1/2 brother to this bull in last year's Bloomfield sale at \$3,200. Don't overlook him, he will improve your herd.

28 **Angus** PB Polled

| | |
|---|--------------------------------------|
| Midnight Shadow Angus Farm 2449 X Ave (515) 436-7783 | Jack Lint Perry, IA 50220- |
|---|--------------------------------------|

| | | | | | | | |
|--------------------------------|--------------------------|-----------|------|------|-------|-------|-------------|
| 1/27/2009 | Reg# 16412482 | BW | 78 | | | | |
| | Black | 205 WT | 701 | | | | |
| | | 205-RATIO | 107 | | | | |
| | Triple B L Edition 814 | FINAL WT | 1250 | | | | |
| | Triple B R 814 1252 | ADG | 3.96 | | | | |
| | Triple B R Black Gem 688 | ADG RATIO | 106 | | | | |
| M S Cornerstone 709 | | WDA | 3.20 | | | | |
| | S F Foresight | WDA RATIO | 99 | | | | |
| | Midnight Shadow 407 | SCRM | 38.0 | | | | |
| | Midnight Shadow 3403 | ADJ YW | 1232 | | | | |
| | | PELVIC-HT | 12.0 | | | | |
| | | PELVIC-WD | 16.0 | | | | |
| PRODUCTION/MATERNAL EPD | | | | | | | |
| CED | BW | WW | YW | MCE | MM | MWW | PELVIC AREA |
| 3.0 | 2.6 | 54.0 | 90.0 | 4.0 | 23.0 | - | 185.5 |
| | | | | | | | FR SC |
| | | | | | | | 6.5 |
| | | | | | | | ADJ REA |
| | | | | | | | 13.30 |
| | | | | | | | BF |
| | | | | | | | 0.22 |
| ANGUS \$VALUES INDEXES | | | | | | | |
| \$W | \$F | \$G | \$QG | \$YG | \$B | \$EN | MARB |
| 28.83 | 27.62 | 10.69 | 5.40 | 5.29 | 36.52 | -1.76 | 3.62 |
| | | | | | | | % RP |
| | | | | | | | 66.4 |

| | | | |
|--------------------|------|--------|------|
| CARCASS EPD | | | |
| HCW | MARB | BF | REA |
| 19.0 | 0.01 | -0.006 | 0.19 |

Dam is a first calf heifer with 1 BWR 100 and 1 WWR 107. 7/8 brother to lot #27. His sire, grandsire & great-grandsire all topped the sales they were purchased from. He will work on first calf heifers. Don't over look him. MS Cornerstone...he will be your cornerstone!

29 **Angus** PB Polled

| | |
|--|--|
| Mather Enterprises 73283 Lincoln Hwy (641) 483-4170 | Joe Mather State Center, IA 50247- |
|--|--|

| | | | | | | | |
|--------------------------------|---------------------------|-----------|-------|------|-------|------|-------------|
| 3/19/2009 | Reg# 16481507 | BW | 72 | | | | |
| | Black | 205 WT | N/A | | | | |
| | | 205-RATIO | N/A | | | | |
| | B/R New Design 036 | FINAL WT | 1100 | | | | |
| | P A A 036 New Design 2922 | ADG | 3.71 | | | | |
| | PAA Bhawk 1093 Ann 4153 | ADG RATIO | 99 | | | | |
| PAA 2922 New Design 9923 | | WDA | 3.23 | | | | |
| | Bon View New Design 208 | WDA RATIO | 101 | | | | |
| | PAA 208 Rito 5921 | SCRM | 41.0 | | | | |
| | P A A 7060 Rito 2925 | ADJ YW | 1195 | | | | |
| | | PELVIC-HT | 13.0 | | | | |
| | | PELVIC-WD | 16.0 | | | | |
| PRODUCTION/MATERNAL EPD | | | | | | | |
| CED | BW | WW | YW | MCE | MM | MWW | PELVIC AREA |
| 9.0 | 0.4 | 45.0 | 79.0 | 7.0 | 20.0 | - | 214.3 |
| | | | | | | | FR SC |
| | | | | | | | 6.2 |
| | | | | | | | ADJ REA |
| | | | | | | | 13.10 |
| | | | | | | | BF |
| | | | | | | | 0.27 |
| ANGUS \$VALUES INDEXES | | | | | | | |
| \$W | \$F | \$G | \$QG | \$YG | \$B | \$EN | MARB |
| 29.08 | 19.96 | 22.24 | 17.10 | 5.14 | 36.98 | 4.15 | 4.76 |
| | | | | | | | % RP |
| | | | | | | | 66.9 |

| | | | |
|--------------------|------|--------|------|
| CARCASS EPD | | | |
| HCW | MARB | BF | REA |
| 7.0 | 0.28 | -0.004 | 0.02 |

**ANGUS BREED AVERAGE EPD's (for non-parent bulls): CED 5.0, BW 2.1, WW 45.0, YW 82.0, MCE 6.0, MM 21.0, MWW N/A, \$W 24.87, \$F 23.88, \$G 21.98, \$B 41.10, \$EN 2.01, HCW 12.0, MARB 0.33, BF 0.013, REA 0.17
ULTRASOUND TEST AVERAGE FOR ICA ANGUS TEST: ADJ-REA 13.2, BF 0.28, MB 4.58**

33 *Angus* PB Polled

| | |
|---|---|
| Golden Chute Ranch 600 Dows St, PO Box 38 (319) 448-4118 | G.N. Neumeier Walker, IA 52352- |
|---|---|

| | | | | | | | |
|-------------------------|---------------------------|-----------|-------|-----|------|-----|-------------|
| 1/6/2009 | Reg# 16391076 | BW | 78 | | | | |
| | Black | 205 WT | 712 | | | | |
| | | 205-RATIO | 104 | | | | |
| | G A R Grid Maker | FINAL WT | 1252 | | | | |
| | GPAR Weight Maker S15 | ADG | 4.09 | | | | |
| | G A R New Design M249 | ADG RATIO | 109 | | | | |
| G C Weightmaker 904 | | WDA | 3.04 | | | | |
| | W C C Special Design L309 | WDA RATIO | 94 | | | | |
| GC Ruth 501 | | SCRM | 39.0 | | | | |
| | Brockmere Belle 3054 | ADJ YW | 1118 | | | | |
| | | PELVIC-HT | 13.0 | | | | |
| | | PELVIC-WD | 16.0 | | | | |
| PRODUCTION/MATERNAL EPD | | | | | | | |
| CED | BW | WW | YW | MCE | MM | MWW | PELVIC AREA |
| 6.0 | 3.3 | 62.0 | 106.0 | 8.0 | 20.0 | - | 196.3 |
| FR SC | | | | | | | |
| 6.3 | | | | | | | |
| ADJ REA | | | | | | | |
| 11.60 | | | | | | | |
| BF | | | | | | | |
| 0.25 | | | | | | | |
| MARB | | | | | | | |
| 4.65 | | | | | | | |
| % RP | | | | | | | |
| 64.0 | | | | | | | |

| | | | |
|-------------|------|-------|------|
| CARCASS EPD | | | |
| HCW | MARB | BF | REA |
| 12.0 | 0.39 | 0.010 | 0.02 |

We continue to be impressed with the weight maker calves. They are so consistent that we haven't steered many to feed out. His carcass numbers are very positive. The dam has 2 @ 106 ratio for weaning.

34 *Angus* PB Polled

| | |
|---|---|
| Golden Chute Ranch 600 Dows St, PO Box 38 (319) 448-4118 | G.N. Neumeier Walker, IA 52352- |
|---|---|

| | | | | | | | |
|--------------------------|---------------------------|-----------|-------|-----|------|-----|-------------|
| 1/17/2009 | Reg# 16391044 | BW | 74 | | | | |
| | Black | 205 WT | 706 | | | | |
| | | 205-RATIO | 104 | | | | |
| | G A R Grid Maker | FINAL WT | 1415 | | | | |
| | GPAR Weight Maker S15 | ADG | 5.80 | | | | |
| | G A R New Design M249 | ADG RATIO | 155 | | | | |
| G C Weightmaker 954 | | WDA | 3.53 | | | | |
| | G C Fame 355 | WDA RATIO | 110 | | | | |
| G C Enchantress Lass 556 | | SCRM | 40.0 | | | | |
| | G C Enchantress Lass 3027 | ADJ YW | 1315 | | | | |
| | | PELVIC-HT | 12.0 | | | | |
| | | PELVIC-WD | 16.5 | | | | |
| PRODUCTION/MATERNAL EPD | | | | | | | |
| CED | BW | WW | YW | MCE | MM | MWW | PELVIC AREA |
| 5.0 | 3.3 | 58.0 | 100.0 | 7.0 | 18.0 | - | 189.0 |
| FR SC | | | | | | | |
| 6.9 | | | | | | | |
| ADJ REA | | | | | | | |
| 11.80 | | | | | | | |
| BF | | | | | | | |
| 0.22 | | | | | | | |
| MARB | | | | | | | |
| 5.10 | | | | | | | |
| % RP | | | | | | | |
| 63.2 | | | | | | | |

| | | | |
|-------------|------|-------|------|
| CARCASS EPD | | | |
| HCW | MARB | BF | REA |
| 27.0 | 0.38 | 0.000 | 0.16 |

If you are selling pounds, take a look here. His sire ratioed 137 over 700 angus calves in the midland test. His dam is double bred Fame with 2 calves rationing at 105 for weaning.

39 *Angus* PB Polled

| | |
|--|---|
| Spear Farm Angus 15788 160th Ave (515) 961-4615 | Marvin Spear Indianola, IA 50125- |
|--|---|

| | | | | | | | |
|-------------------------|--------------------------|-----------|------|-----|------|-----|-------------|
| 2/4/2009 | Reg# 16463694 | BW | 88 | | | | |
| | Black | 205 WT | 0 | | | | |
| | | 205-RATIO | 104 | | | | |
| | Vermilion Payweight J847 | FINAL WT | 1278 | | | | |
| | S F A Payweight 623 | ADG | 4.11 | | | | |
| | Elba Lady 042 of Otter | ADG RATIO | 110 | | | | |
| S F A Payweight 938 | | WDA | 3.34 | | | | |
| | Hoff Pay Roll S C 363 | WDA RATIO | 104 | | | | |
| Eline 0243 of Otter | | SCRM | 39.0 | | | | |
| | Eline 9313 | ADJ YW | 1222 | | | | |
| | | PELVIC-HT | 13.0 | | | | |
| | | PELVIC-WD | 16.0 | | | | |
| PRODUCTION/MATERNAL EPD | | | | | | | |
| CED | BW | WW | YW | MCE | MM | MWW | PELVIC AREA |
| 5.0 | 2.0 | 50.0 | 85.0 | 7.0 | 14.0 | - | 203.5 |
| FR SC | | | | | | | |
| 6.6 | | | | | | | |
| ADJ REA | | | | | | | |
| 13.40 | | | | | | | |
| BF | | | | | | | |
| 0.33 | | | | | | | |
| MARB | | | | | | | |
| 4.15 | | | | | | | |
| % RP | | | | | | | |
| 65.2 | | | | | | | |

| | | | |
|-------------|-------|-------|------|
| CARCASS EPD | | | |
| HCW | MARB | BF | REA |
| 6.0 | -0.05 | 0.004 | 0.04 |

Just a real good BR Midlan son who could do a lot of good for you. Low birthweight, high performance & out of on of our best maternal lines.

40 *Angus* PB Polled

| | |
|--------------|---|
| 280 650th St | Jessica Utesch Pierson, IA 51048- |
|--------------|---|

| | | | | | | | |
|---------------------------|----------------------------|-----------|------|------|------|-----|-------------|
| 3/8/2009 | Reg# 16465872 | BW | 77 | | | | |
| | Black | 205 WT | 707 | | | | |
| | | 205-RATIO | 110 | | | | |
| | Twin Valley Precision E161 | FINAL WT | 1171 | | | | |
| | BR Midland | ADG | 3.79 | | | | |
| | BR Royal Lass 7036-19 | ADG RATIO | 101 | | | | |
| Triple U Mid Free Bar W13 | | WDA | 3.34 | | | | |
| | TC Freedom 104 | WDA RATIO | 104 | | | | |
| Triple U Freedom Etha S17 | | SCRM | 38.0 | | | | |
| | Triple U B A R Ext Etha J9 | ADJ YW | 1255 | | | | |
| | | PELVIC-HT | 13.0 | | | | |
| | | PELVIC-WD | 15.0 | | | | |
| PRODUCTION/MATERNAL EPD | | | | | | | |
| CED | BW | WW | YW | MCE | MM | MWW | PELVIC AREA |
| 11.0 | -0.2 | 48.0 | 86.0 | 10.0 | 15.0 | - | 198.5 |
| FR SC | | | | | | | |
| 5.8 | | | | | | | |
| ADJ REA | | | | | | | |
| 14.90 | | | | | | | |
| BF | | | | | | | |
| 0.52 | | | | | | | |
| MARB | | | | | | | |
| 6.76 | | | | | | | |
| % RP | | | | | | | |
| 66.0 | | | | | | | |

| | | | |
|-------------|------|-------|------|
| CARCASS EPD | | | |
| HCW | MARB | BF | REA |
| 1.0 | 0.42 | 0.016 | 0.03 |

Just a real good BR Midlan son who could do a lot of good for you. Low birthweight, high performance & out of on of our best maternal lines.

**ANGUS BREED AVERAGE EPD's (for non-parent bulls): CED 5.0, BW 2.1, WW 45.0, YW 82.0, MCE 6.0, MM 21.0, MWW N/A, \$W 24.87, \$F 23.88, \$G 21.98, \$B 41.10, \$EN 2.01, HCW 12.0, MARB 0.33, BF 0.013, REA 0.17
ULTRASOUND TEST AVERAGE FOR ICA ANGUS TEST: ADJ-REA 13.2, BF 0.28, MB 4.58**

42 **Angus** PB Polled

| | |
|---|--|
| J/W Angus 14645 Concord Ave (712) 689-2233 | John Witt Arcadia, IA 51430- |
|---|--|

| | | | | | | | |
|--------------------------------|-----------------------------|-----------|------|------|-------|------|-------------|
| 1/27/2009 | Reg# 16456643 | BW | 74 | | | | |
| | Black | 205 WT | 688 | | | | |
| | | 205-RATIO | 96 | | | | |
| | War Alliance 9126 6006 | FINAL WT | 1262 | | | | |
| | R M P Alliance 6081 05 | ADG | 3.67 | | | | |
| | R M P Erica Energy 6081 | ADG RATIO | 98 | | | | |
| Witts Alliance 8 | | WDA | 3.23 | | | | |
| | Wachter Hi Power W293 | WDA RATIO | 100 | | | | |
| | Witts Blackcap Mc Henry 279 | SCRM | 39.0 | | | | |
| | Witts Blackcap Mc Henry 183 | ADJ YW | 1203 | | | | |
| | | PELVIC-HT | 13.0 | | | | |
| | | PELVIC-WD | 16.0 | | | | |
| PRODUCTION/MATERNAL EPD | | | | | | | |
| CED | BW | WW | YW | MCE | MM | MWW | PELVIC AREA |
| 1.0 | 2.6 | 46.0 | 89.0 | 4.0 | 14.0 | - | 201.5 |
| | | | | | | | FR SC |
| | | | | | | | 6.5 |
| | | | | | | | ADJ REA |
| | | | | | | | 12.10 |
| | | | | | | | BF |
| | | | | | | | 0.21 |
| ANGUS \$VALUES INDEXES | | | | | | | |
| \$W | \$F | \$G | \$QG | \$YG | \$B | \$EN | MARB |
| 20.29 | 30.09 | 4.95 | 1.66 | 3.29 | 31.09 | 6.53 | 5.79 |
| | | | | | | | % RP |
| | | | | | | | 64.9 |

| | | | |
|--------------------|-------|--------|------|
| CARCASS EPD | | | |
| HCW | MARB | BF | REA |
| 19.0 | -0.07 | -0.008 | 0.02 |

A powerful son of RMP Alliance 6081 05. 3/4 brother to the high selling bull at the 2009 ICA Dunlap Sale at \$3,500 selling to Lauritsen Farms at Exira. Check this bull out, you'll like him.

43 **Angus** PB Polled

| | |
|--|--|
| Witt Cattle Co 14645 Concord Ave (712) 689-2233 | Emily Witt Dieter Arcadia, IA 51430- |
|--|--|

| | | | | | | | |
|--------------------------------|-----------------------------|-----------|------|------|-------|------|-------------|
| 1/10/2009 | Reg# 16456641 | BW | 70 | | | | |
| | Black | 205 WT | 703 | | | | |
| | | 205-RATIO | 98 | | | | |
| | War Alliance 9126 6006 | FINAL WT | 1322 | | | | |
| | R M P Alliance 6081 05 | ADG | 3.46 | | | | |
| | R M P Erica Energy 6081 | ADG RATIO | 92 | | | | |
| Witts Alliance 6 | | WDA | 3.24 | | | | |
| | Wachter Hi Power W293 | WDA RATIO | 101 | | | | |
| | Witts Blackcap Mc Henry 271 | SCRM | 36.5 | | | | |
| | Witts Blackcap Mc Henry 204 | ADJ YW | 1210 | | | | |
| | | PELVIC-HT | 13.0 | | | | |
| | | PELVIC-WD | 16.5 | | | | |
| PRODUCTION/MATERNAL EPD | | | | | | | |
| CED | BW | WW | YW | MCE | MM | MWW | PELVIC AREA |
| 1.0 | 2.4 | 45.0 | 86.0 | 5.0 | 15.0 | - | 203.8 |
| | | | | | | | FR SC |
| | | | | | | | 6.0 |
| | | | | | | | ADJ REA |
| | | | | | | | 12.50 |
| | | | | | | | BF |
| | | | | | | | 0.27 |
| ANGUS \$VALUES INDEXES | | | | | | | |
| \$W | \$F | \$G | \$QG | \$YG | \$B | \$EN | MARB |
| 22.29 | 27.50 | 9.19 | 6.48 | 2.71 | 37.89 | 6.59 | 5.61 |
| | | | | | | | % RP |
| | | | | | | | 64.3 |

| | | | |
|--------------------|------|-------|------|
| CARCASS EPD | | | |
| HCW | MARB | BF | REA |
| 24.0 | 0.03 | 0.001 | 0.13 |

An outstanding son of the 2,500# RMP Alliance 6081 05 & a full brother to one of our \$3,000, 2nd high selling Angus bulls at last year's Bloomfield sale. Dam is one of our best Hi Power daughters. This bull will add pounds & performance to your calves. A herd improver here. Look at him.

44 **Angus** PB Polled

| | |
|--|--|
| Witt Cattle Co 14645 Concord Ave (712) 689-2233 | Emily Witt Dieter Arcadia, IA 51430- |
|--|--|

| | | | | | | | |
|--------------------------------|-------------------------|-----------|------|------|-------|------|-------------|
| 1/23/2009 | Reg# 16456642 | BW | 72 | | | | |
| | Black | 205 WT | 688 | | | | |
| | | 205-RATIO | 96 | | | | |
| | War Alliance 9126 6006 | FINAL WT | 1230 | | | | |
| | R M P Alliance 6081 05 | ADG | 3.48 | | | | |
| | R M P Erica Energy 6081 | ADG RATIO | 93 | | | | |
| Witts Alliance 7 | | WDA | 3.11 | | | | |
| | B A F Hi Flyer 195 | WDA RATIO | 97 | | | | |
| | Witts Eldorene 142 | SCRM | 36.0 | | | | |
| | Witts Eldorene 120 | ADJ YW | 1162 | | | | |
| | | PELVIC-HT | 13.0 | | | | |
| | | PELVIC-WD | 16.0 | | | | |
| PRODUCTION/MATERNAL EPD | | | | | | | |
| CED | BW | WW | YW | MCE | MM | MWW | PELVIC AREA |
| 4.0 | 1.8 | 42.0 | 80.0 | 4.0 | 15.0 | - | 200.5 |
| | | | | | | | FR SC |
| | | | | | | | 6.1 |
| | | | | | | | ADJ REA |
| | | | | | | | 16.10 |
| | | | | | | | BF |
| | | | | | | | 0.21 |
| ANGUS \$VALUES INDEXES | | | | | | | |
| \$W | \$F | \$G | \$QG | \$YG | \$B | \$EN | MARB |
| 22.37 | 22.78 | 12.55 | 5.00 | 7.55 | 35.78 | 8.42 | 5.08 |
| | | | | | | | % RP |
| | | | | | | | 70.1 |

| | | | |
|--------------------|------|--------|------|
| CARCASS EPD | | | |
| HCW | MARB | BF | REA |
| 17.0 | 0.00 | -0.008 | 0.33 |

Another great RMP Alliance 6081 05 son and out of an outstanding Hi Flyer daughter. A real calving ease bull here with a good deal of performance. Look at this bull, you will like him.

**Thank you for
attending this year's
ICA Bloomfield sale!**

ULTRASOUND TEST AVERAGE FOR ICA CHI-ANGUS TEST: ADJ-REA 14.2, BF 0.23, MB 3.63

45 *Chi-Angus* 2CA Polled

| | |
|--|---|
| Clarahan Farms 19425 280th Ave (641) 635-2105 | Dennis Clarahan Harper, IA 52231- |
|--|---|

| | | | |
|----------|-----------------------|-------------|-------|
| 2/8/2009 | Reg# 344886 | BW | 90 |
| | Black | 205 WT | 605 |
| | | 205-RATIO | 93 |
| | RDD Tracer 2CA | FINAL WT | 1203 |
| | RDD Tracker | ADG | 4.18 |
| | OHL Snowbird 717G 1CA | ADG RATIO | 110 |
| | DCL Tracker 907W | WDA | 3.17 |
| | Bushs Mony Train | WDA RATIO | 103 |
| | OHL Millie 109 2L 1CA | SCRM | 35.5 |
| | SF Polette 48Z 2CA | ADJ YW | 1161 |
| | | PELVIC-HT | 12.0 |
| | | PELVIC-WD | 14.0 |
| | | PEVLIC AREA | 164.5 |
| | | FR SC | 5.6 |
| | | ADJ REA | 13.90 |
| | | BF | 0.20 |
| | | MARB | 3.09 |
| | | % RP | 67.7 |

| PRODUCTION/MATERNAL EPD | | | | | | |
|-------------------------|-----|------|------|-----|-----|-----|
| CED | BW | WW | YW | MCE | MM | MWW |
| - | 0.3 | 42.4 | 82.9 | - | 9.8 | - |

46 *Chi-Angus* PCA Polled

| | |
|--|---|
| Clarahan Farms 19425 280th Ave (641) 635-2105 | Dennis Clarahan Harper, IA 52231- |
|--|---|

| | | | |
|-----------|-----------------------|-------------|-------|
| 2/28/2009 | Reg# 345294 | BW | 87 |
| | Black | 205 WT | 712 |
| | | 205-RATIO | 100 |
| | RDD Tracer (2CA) | FINAL WT | 1153 |
| | RDD Tracker | ADG | 3.60 |
| | OHL Snowbird 717G 1CA | ADG RATIO | 95 |
| | DCL Tracker 905W | WDA | 3.21 |
| | OHL Zippin Hot 293M | WDA RATIO | 104 |
| | DCL Ms Zip 557R | SCRM | 34.5 |
| | RDD Ms Comet G56 1CA | ADJ YW | 1191 |
| | | PELVIC-HT | 13.0 |
| | | PELVIC-WD | 15.0 |
| | | PEVLIC AREA | 196.5 |
| | | FR SC | 6.1 |
| | | ADJ REA | 15.10 |
| | | BF | 0.27 |
| | | MARB | 2.96 |
| | | % RP | 68.9 |

| PRODUCTION/MATERNAL EPD | | | | | | |
|-------------------------|-----|------|------|-----|-----|-----|
| CED | BW | WW | YW | MCE | MM | MWW |
| - | 1.0 | 32.9 | 69.5 | - | 8.9 | - |

47 *Chi-Angus* 1CA Polled

| | |
|--|---|
| Clarahan Farms 19425 280th Ave (641) 635-2105 | Dennis Clarahan Harper, IA 52231- |
|--|---|

| | | | |
|-----------|----------------------------|-------------|-------|
| 3/28/2009 | Reg# 344885 | BW | 93 |
| | Black | 205 WT | 694 |
| | | 205-RATIO | 107 |
| | RDD Destinys Ace | FINAL WT | 1192 |
| | DCL Ace G56 | ADG | 4.40 |
| | RDD Ms Comet G56 1CA | ADG RATIO | 116 |
| | DCL Ace 906W | WDA | 3.60 |
| | Krugerrand of Donamere 490 | WDA RATIO | 117 |
| | Fabius Edella Erica 9585 | SCRM | 33.0 |
| | Fabius Edella Erica 5385 | ADJ YW | 1305 |
| | | PELVIC-HT | 14.0 |
| | | PELVIC-WD | 16.0 |
| | | PEVLIC AREA | 232.5 |
| | | FR SC | 6.8 |
| | | ADJ REA | 14.50 |
| | | BF | 0.29 |
| | | MARB | 3.40 |
| | | % RP | 67.7 |

| PRODUCTION/MATERNAL EPD | | | | | | |
|-------------------------|------|------|------|-----|------|-----|
| CED | BW | WW | YW | MCE | MM | MWW |
| - | -0.4 | 37.8 | 77.7 | - | 12.5 | - |

SIMMENTAL BREED AVERAGE EPD's (for non-parent bulls): CED 7.0, BW 1.1, WW 31.2, YW 55.9, MCE 2.7, MM 4.4, MWW 20.0, YG -0.01, STAY 17.7, API 102, TI 61, HCW -2.6, MARB 0.13, BF 0.01, REA 0.11
ULTRASOUND TEST AVERAGE FOR ICA SIMMENTAL TEST: ADJ-REA 14.3, BF 0.20, MB 3.11

51 **Simmental** PB Polled

409 Delaney Dr **Neal Haarman**
 Jacksonville, IL 62650-

2/1/2009 Reg# 2507167
 Black
 R&R Warehouse K609
 DJ Salution S502
 Miss Jong F117
 Jackson W01
 DLS After Burner P409
 DLS Sweet Fantasy T728
 DLS Sweet On U R525

| PRODUCTION/MATERNAL EPD | | | | | | |
|-------------------------|-----|------|------|-----|------|------|
| CED | BW | WW | YW | MCE | MM | MWW |
| 9.8 | 0.3 | 29.0 | 47.7 | 3.6 | -0.4 | 14.1 |

| YG | Stay | API | TI |
|-------|-------|-------|------|
| -0.03 | 18.00 | 102.0 | 59.0 |

| CARCASS EPD | | | |
|-------------|------|-------|------|
| HCW | MARB | BF | REA |
| -8.9 | 0.08 | 0.010 | 0.06 |

| | |
|-------------|-------|
| BW | 89 |
| 205 WT | 720 |
| 205-RATIO | N/C |
| FINAL WT | 1200 |
| ADG | 3.65 |
| ADG RATIO | 93 |
| WDA | 3.11 |
| WDA RATIO | 95 |
| SCRM | 36.0 |
| ADJ YW | 1200 |
| PELVIC-HT | 12.5 |
| PELVIC-WD | 15.0 |
| PEVLIC AREA | 182.3 |
| FR SC | 6.1 |
| ADJ REA | 13.35 |
| BF | 0.21 |
| MARB | 1.96 |
| % RP | 67.0 |

54 **Simmental** 3/4 Polled

Muhlenbruch Family Farm **Mark Muhlenbruch**
 340 80th St Dows, IA 50071-
 (515) 852-4496

2/18/2009 Reg# 2495727
 Black
 Nichols Legacy G151
 CNS Dream On L186
 CNS Sheeza Dream K107W
 M218BW
 Yardley GrandCanyon J376
 Canyons French Silk M11
 Strathe Miss Empress 6360

| PRODUCTION/MATERNAL EPD | | | | | | |
|-------------------------|------|------|------|-----|------|------|
| CED | BW | WW | YW | MCE | MM | MWW |
| 9.6 | -0.1 | 27.6 | 50.4 | 7.7 | -0.7 | 13.1 |

| YG | Stay | API | TI |
|------|------|-------|------|
| 0.12 | - | 109.0 | 65.0 |

| CARCASS EPD | | | |
|-------------|------|-------|-------|
| HCW | MARB | BF | REA |
| -7.6 | 0.33 | 0.050 | -0.13 |

| | |
|-------------|-----------|
| BW | 78 |
| 205 WT | 629 |
| 205-RATIO | N/C (TWI) |
| FINAL WT | 1213 |
| ADG | 3.77 |
| ADG RATIO | 96 |
| WDA | 3.29 |
| WDA RATIO | 100 |
| SCRM | 32.5 |
| ADJ YW | 1201 |
| PELVIC-HT | 13.0 |
| PELVIC-WD | 14.5 |
| PEVLIC AREA | 187.5 |
| FR SC | 6.9 |
| ADJ REA | 15.42 |
| BF | 0.20 |
| MARB | 3.18 |
| % RP | 69.5 |

A son of the great Dream On out of one of our Canyon show heifers. A very productive cow family that traces back to a Scotch Cap daughter out of the Strathe Angus program. A light birthweight bull with positive calving ease and negative birth weight EPDs.

56 **Simmental** PB Polled

280 650th St **Jessica Utesch**
 Pierson, IA 51048-

1/29/2009 Reg# 2497075
 Black Baldy
 WLE Powerstroke
 SS Goldmine L42
 GW Miss Lucky Buck 858G
 Triple U Bull W1
 Circle S Leachman 600U
 Triple U Ranch F 2
 Triple U Ranch B20

| PRODUCTION/MATERNAL EPD | | | | | | |
|-------------------------|-----|------|------|-----|-----|------|
| CED | BW | WW | YW | MCE | MM | MWW |
| 10.9 | 0.4 | 26.1 | 43.6 | 3.8 | 7.6 | 20.6 |

| YG | Stay | API | TI |
|-------|-------|-------|------|
| -0.02 | 15.00 | 103.0 | 61.0 |

| CARCASS EPD | | | |
|-------------|------|-------|------|
| HCW | MARB | BF | REA |
| -11.1 | 0.20 | 0.010 | 0.01 |

| | |
|-------------|----------|
| BW | 96 |
| 205 WT | 716 |
| 205-RATIO | N/C (ET) |
| FINAL WT | 1449 |
| ADG | 4.43 |
| ADG RATIO | 113 |
| WDA | 3.72 |
| WDA RATIO | 113 |
| SCRM | 39.5 |
| ADJ YW | 1386 |
| PELVIC-HT | 13.0 |
| PELVIC-WD | 15.0 |
| PEVLIC AREA | 189.0 |
| FR SC | 7.3 |
| ADJ REA | 14.40 |
| BF | 0.16 |
| MARB | 3.07 |
| % RP | 66.7 |

Easily our pasture favorite last summer, this Goldmine son is one powerful herdsire prospect. He is out of our high marbling donor cow who does it right every time & he is tested homozygous black. He gained 4.43 lbs/day on test and weighs 1450 lbs. Don't let this one get away!

57 **Simmental** PB Polled

Wolfe Simmentals **Bill Wolfe**
 13908 50th Ave Prole, IA 50229-
 (641) 297-2141

1/24/2009 Reg# 2494737
 Black
 Nichols Legacy G151
 CNS Dream On L186
 CNS Sheeza Dream K107W
 D44KW
 Circle S Leachman 600U
 WS Miss Molly
 WS Molly O

| PRODUCTION/MATERNAL EPD | | | | | | |
|-------------------------|------|------|------|-----|-----|------|
| CED | BW | WW | YW | MCE | MM | MWW |
| 10.8 | -0.9 | 31.7 | 56.8 | 7.2 | 2.7 | 18.6 |

| YG | Stay | API | TI |
|------|-------|-------|------|
| 0.03 | 18.10 | 122.0 | 69.0 |

| CARCASS EPD | | | |
|-------------|------|-------|------|
| HCW | MARB | BF | REA |
| -5.1 | 0.33 | 0.030 | 0.10 |

| | |
|-------------|-------|
| BW | 90 |
| 205 WT | 692 |
| 205-RATIO | 107 |
| FINAL WT | 1246 |
| ADG | 4.06 |
| ADG RATIO | 104 |
| WDA | 3.16 |
| WDA RATIO | 96 |
| SCRM | 39.0 |
| ADJ YW | 1161 |
| PELVIC-HT | 13.0 |
| PELVIC-WD | 16.0 |
| PEVLIC AREA | 200.8 |
| FR SC | 7.0 |
| ADJ REA | 13.32 |
| BF | 0.19 |
| MARB | 3.48 |
| % RP | 66.8 |

Double black & double polled. His dam has an average weaning weight ratio of 107 & an average birth weight ratio of 104. She's a full sister to the WS44 Magnum bull. Opportunity to buy a Dream On son from a great cow.

**SIMMENTAL BREED AVERAGE EPD's (for non-parent bulls): CED 7.0, BW 1.1, WW 31.2, YW 55.9, MCE 2.7, MM 4.4, MWW 20.0,
YG -0.01, STAY 17.7, API 102, TI 61, HCW -2.6, MARB 0.13, BF 0.01, REA 0.11
ULTRASOUND TEST AVERAGE FOR ICA SIMMENTAL TEST: ADJ-REA 14.3, BF 0.20, MB 3.11**

58 *Simmental* PB Polled

59 *Simmental* PB Polled

Wolfe Simmentals **Bill Wolfe**
13908 50th Ave Prole, IA 50229-
(641) 297-2141

Wolfe Simmentals **Bill Wolfe**
13908 50th Ave Prole, IA 50229-
(641) 297-2141

| | | | | | | | |
|--------------------------------|---------------------|-----------|------|-----|-----|------|-------------|
| 2/10/2009 | Reg# 2494720 | BW | 85 | | | | |
| | Black | 205 WT | 716 | | | | |
| | | 205-RATIO | 111 | | | | |
| | Wheatland Bull 131L | FINAL WT | 1316 | | | | |
| | Sand Ranch Hand | ADG | 4.81 | | | | |
| | Sand Lucky Charmer | ADG RATIO | 123 | | | | |
| 32PW | | WDA | 3.49 | | | | |
| | JF Gator 225M | WDA RATIO | 106 | | | | |
| | WSH32P | SCRM | 38.5 | | | | |
| | WS H32 | ADJ YW | 1277 | | | | |
| | | PELVIC-HT | 14.0 | | | | |
| | | PELVIC-WD | 15.0 | | | | |
| PRODUCTION/MATERNAL EPD | | | | | | | |
| CED | BW | WW | YW | MCE | MM | MWW | PEVLIC AREA |
| 11.5 | -3.4 | 23.5 | 48.9 | 2.6 | 8.7 | 20.4 | 207.0 |
| | | | | | | | FR SC |
| | | | | | | | 7.0 |
| | | | | | | | ADJ REA |
| | | | | | | | 14.19 |
| | | | | | | | BF |
| | | | | | | | 0.18 |
| | | | | | | | MARB |
| | | | | | | | 3.09 |
| | | | | | | | % RP |
| | | | | | | | 67.4 |

| | | | | | | | |
|--------------------------------|---------------------|-----------|------|-----|-----|------|-------------|
| 2/16/2009 | Reg# 2494705 | BW | 79 | | | | |
| | Black | 205 WT | 651 | | | | |
| | | 205-RATIO | 101 | | | | |
| | GW Lucky Dice 187H | FINAL WT | 1181 | | | | |
| | Hooks Majestic 31M | ADG | 4.04 | | | | |
| | Hooks Koko 11K | ADG RATIO | 103 | | | | |
| G44KW | | WDA | 3.18 | | | | |
| | ER Black Cisco 532C | WDA RATIO | 97 | | | | |
| | WS Clairebell | SCRM | 34.0 | | | | |
| | WS Claire | ADJ YW | 1163 | | | | |
| | | PELVIC-HT | 13.5 | | | | |
| | | PELVIC-WD | 15.0 | | | | |
| PRODUCTION/MATERNAL EPD | | | | | | | |
| CED | BW | WW | YW | MCE | MM | MWW | PEVLIC AREA |
| 9.5 | -2.7 | 26.3 | 56.9 | 5.1 | 4.0 | 17.2 | 201.0 |
| | | | | | | | FR SC |
| | | | | | | | 6.9 |
| | | | | | | | ADJ REA |
| | | | | | | | 14.29 |
| | | | | | | | BF |
| | | | | | | | 0.16 |
| | | | | | | | MARB |
| | | | | | | | 2.96 |
| | | | | | | | % RP |
| | | | | | | | 68.8 |

| CARCASS EPD | | | |
|-------------|------|-------|------|
| HCW | MARB | BF | REA |
| -13.1 | 0.20 | 0.030 | 0.23 |

| CARCASS EPD | | | |
|-------------|------|-------|------|
| HCW | MARB | BF | REA |
| -7.2 | 0.06 | 0.040 | 0.28 |

Double black & double polled. His dam has an average weaning weight ratio of 108, an average birth weight ratio of 106 & an average calving interval of 362 days on 4 calves. A moderate frame cow with a perfect udder. Save every heifer from this bull.

Double black & double polled. His dam has an average weaning weight ratio of 99, an average birth weight ratio of 108 & an average calving interval of 364 days on 8 calves. She calved again on 01/29 this year. High fertility cow.

60 *Simmental* PB Polled

Wolfe Simmentals **Matt Wolfe**
700 3rd Ave SW Altoona, IA 50009-

| | | | | | | | |
|--------------------------------|-------------------------|-----------|------|------|-----|------|-------------|
| 2/11/2009 | Reg# 2494708 | BW | 97 | | | | |
| | Black | 205 WT | 625 | | | | |
| | | 205-RATIO | 97 | | | | |
| | SRS J914 Preferred Beef | FINAL WT | 1170 | | | | |
| | Triple C Invasion R47K | ADG | 4.29 | | | | |
| | Hooks Karrie 47K | ADG RATIO | 109 | | | | |
| H05RW | | WDA | 3.11 | | | | |
| | CNS Power Source 070K | WDA RATIO | 95 | | | | |
| | WS H05R | SCRM | 34.5 | | | | |
| | WS H05 | ADJ YW | 1158 | | | | |
| | | PELVIC-HT | 13.0 | | | | |
| | | PELVIC-WD | 15.0 | | | | |
| PRODUCTION/MATERNAL EPD | | | | | | | |
| CED | BW | WW | YW | MCE | MM | MWW | PEVLIC AREA |
| 9.4 | 1.5 | 20.5 | 37.5 | -0.1 | 6.6 | 16.8 | 192.3 |
| | | | | | | | FR SC |
| | | | | | | | 6.9 |
| | | | | | | | ADJ REA |
| | | | | | | | 12.51 |
| | | | | | | | BF |
| | | | | | | | 0.10 |
| | | | | | | | MARB |
| | | | | | | | 3.13 |
| | | | | | | | % RP |
| | | | | | | | 67.3 |

| CARCASS EPD | | | |
|-------------|------|-------|-------|
| HCW | MARB | BF | REA |
| -12.8 | 0.25 | 0.000 | -0.05 |

Double black & double polled. His dam has an average weaning weight ratio of 103, an average birth weight ratio of 93 & an average calving interval of 355 days on 3 calves. Calving ease pedigree on this bull.

ICA BULL EVALUATION PROGRAM INFORMATION

REGISTRATION PAPERS:

All sale bulls have been registered with their respective breed associations. Registration papers will be transferred to the buyer by the sale management.

EPD INFORMATION:

An expected progeny difference (EPD) is prediction of how future progeny of each animal are expected to perform in comparison with other animals, of the same breed, in the evaluation. EPDs are expressed in units of measure for the trait, plus or minus.

EPDs are provided by the national breed associations for each bull. The breed average EPDs are listing in the sale catalog within the breed heading. You may compare each bull with that average to determine his strength in each trait.

Accuracy of an EPD is a measure of reliability. It is a function of the amount of information used in the calculation of a specific EPD. Based on this definition, ICA sale bull's accuracies will be moderate to low. Research, however, indicates that EPDs for young non-parent bull are 8-10 times more accurate for making selection decisions than adjusted weights and ratios.

Calving Ease Direct (CED), is expressed as a difference in percentage of unassisted births, with a higher value indicating greater calving ease in first-calf heifers. It predicts the average difference in ease with which an sire's calves will be born when he is bred to first-calf heifers.

Birth Weight EPD (BW), Weaning Weight EPD (WW), Yearling Weight EPD (YW), expressed in pounds, is a predictor of a sire's ability to transmit those weight to his progeny compared to that of other sires.

Calving Ease Maternal (CEM), is expressed as a difference in percentage of unassisted births with a higher value indicating greater calving ease in first-calf daughters. It predicts the average ease with which a sire's daughters will calve as first-calf heifers when compared to daughters of other sires.

Maternal Milk EPD (MM), is a predictor of a sire's genetic merit for milk and mothering ability as expressed in his daughters compared to daughters of other sires. In other words, it is that part of a calf's weaning weight attributed to milk and mothering ability.

Carcass Weight EPD (HCW), expressed in pounds is a predictor of the differences in hot carcass weight of a sire's progeny compared to progeny of other sires.

Marbling EPD (MARB), expressed as a fraction of the difference in USDA marbling score of a sire's progeny compared to progeny of other sires.

Ribeye Area EPD (REA), expressed in square inches, is a predictor of the difference in ribeye area of a sire's progeny compared to progeny of other sires.

Fat Thickness EPD (BF), expressed in inches, is a predictor of the differences in external fat thickness at the 12th rib (as measured between the 12th and 13th ribs) of a sire's progeny compared to progeny of other sires.

ANGUS BREED ONLY

\$Value Indexes, are multi-trait selection indexes, expressed in dollars per head, to assist beef producers by adding simplicity to genetic selection decisions. The \$Value is an estimate of how future progeny of each sire are expected to perform, on average, compared to progeny of other sires in the database if the sires were randomly mated to cows and if calves were exposed to the same environment.

Weaned Calf Value (\$W), an index value expressed in dollars per head, is the expected average difference in future progeny performance for preweaning merit. \$W includes both revenue and cost adjustments associated with differences in birth weight, weaning direct growth, maternal milk, and mature cow size.

Feedlot Value (\$F), an index value expressed in dollars per head, is the expected average difference in future progeny performance for postweaning merit compared to progeny of other sires.

Grid Value (\$G), an index value expressed in dollars per head, is the expected average difference in future progeny performance for carcass grid merit compared to progeny of other sires.

Quality Grade (\$QG), \$QG represents the quality grade segment of the economic advantage found in \$G. \$QG is intended for the specialized user wanting to place more emphasis on improving quality grade. The carcass marbling (Marb) EPD contributes to \$QG.

Yield Grade (\$YG), \$YG represents the yield grade segment of the economic advantage found in \$G. \$YG is intended for the specialized user wanting to place more emphasis on red meat yield. It provides a multi-trait approach to encompass ribeye, fat thickness and weight into an economic value for red meat yield.

Beef Value (\$B), an index value expressed in dollars per head, is the expected average difference in future progeny performance for postweaning and carcass value compared to progeny of other sires.

Cow Energy Value (\$EN), expressed in dollars savings per cow per year, assesses differences in cow energy requirements as an expected dollar savings difference in daughters of sires. A larger value is more favorable when comparing two animals (more dollars saved on feed energy expenses). Components for computing the cow \$EN savings difference include lactation energy requirements and energy costs associated with differences in mature cow size.

GELBVIEW BREED ONLY

Total Maternal EPD (TOTMAT), a value that combines growth & milk information and a prediction of the weaning weight performance of calves from a sire's daughters.

Stayability (STAY), predicts the genetic difference, in terms of percent probability, that a bull's daughters will stay productive within a herd to at least six years of age.

Days to Finish (DtF), expressed in days to reach a constant fat endpoint, which is commonly used in the feedlot to determine when an animal is finished with the appropriate amount of fat cover. When evaluating two potential sires with comparable EPDs for other traits, the sire with the lesser value for DtF will produce progeny that will finish sooner with potentially lower feed costs.

Carcass Value (CV), expressed in dollar value per head, comparing progeny of one animal to another in dollar differences when progeny are sold on a grid. This value is a true economic comparison; it is not grid merit at a standard carcass weight as many breeds calculate. Projected carcass weight, penalties for "out" weight carcasses (too heavy or light), quality grade and yield grade premiums and discounts are all included in calculating this \$EPD value.

Feedlot Merit (FM), expressed in dollars per head, value passed to progeny. Measures the dollar value associated with the expected gain and feedlot efficiency of progeny when fed in a "typical" feedlot arrangement.

RED ANGUS BREED ONLY

Total Maternal EPD (TOTMAT), a value that combines growth & milk information and a prediction of the weaning weight performance of calves from a sire's daughters.

Stayability (STAY), predicts the genetic difference, in terms of percent probability, that a bull's daughters will stay productive within a herd to at least six years of age.

SIMMENTAL BREED ONLY

Stayability (STAY), expressed as the probability that an animal's daughters will remain in production to at least six years of age when compared to the daughters of another animal. A measure of sustained fertility that probably reflects traits such as fleshing ability and structural soundness.

Yield Grade (YG), is measured in a carcass yield grade units/score at 475 days and low values indicate a lower yield grade.

All-Purpose Index (API), evaluates sires for use on the entire cow herd with the portion of their daughters required to maintain herd size retained and the remaining heifers and steers put on feed and sold grade and yield.

Terminal Index (TI), evaluates sires for use on mature cows with all the offspring put on feed and sold grade and yield.

ICA BULL EVALUATION PROGRAM INFORMATION

DEFINITIONS OF CATALOG INFORMATION:

1. **ADG** - Average daily gain during the official test period.
2. **ADG Ratio** - Compares the bull's gain with other bulls of same breed at the test.
3. **WDA** - Weight per day of age equals final weight divided by days of age.
4. **WDA Ratio** - Compares individual WDA with other bulls of same breed group.
5. **ADJ. Yr. Wt.** - The bulls final weight adjusted to 365 days of age and adjusted for age of dam using the standard test-station BIF formula for the yearling bulls and to 452 days of age for the long yearling bulls.
6. **Final Wt.** - Final weight taken at the conclusion of the test.
7. **Frame Score** - Measured hip height adjusted to 365 and converted to frame score.
8. **Scro CM** - Scrotal circumference in centimeters. Bulls with below minimum testicle size have been screened from the sale based on information from the American Veterinary Society standards.
9. **Adj. Pelvic Area** - Width x height = pelvic area in square centimeters, adjusted to 365 days of age.
10. **Ultrasound measurement** - See attached page.
11. **Percent Retail Product** - the amount of salable meat the carcass will yield assuming a 63% dress of the final weight and 2.5% kidney, pelvic & heart fat. Calculated using the standard BIF formula.
12. **Information from Breeders:**
 - a. **Birth Wt** - Actual birth weight as reported by bull owner.
 - b. **205 Wt** - Actual weaning weight adjusted to the standard 205 days with an adjustment for age of dam.
 - c. **205 Wt Ratio** -- Within herd ratio compared to other bulls in the on-farm contemporary group.
 - d. **Registration Papers** - Are available for review in the sale office for other EPDs or indexes published by the various breed associations.

| | | | | | |
|-------------------------|----|----|----|----|----|
| FRAME SCORE | 5 | 6 | 7 | 8 | 9 |
| 365 Day Hip Ht (inches) | 49 | 51 | 53 | 55 | 57 |

| SCROTAL CIRCUMFERENCE (CM.) BY AGE | | | |
|------------------------------------|-----------|-------|------|
| AGE | VERY GOOD | GOOD | POOR |
| 12-14 months | >34 | 30-34 | <30 |
| 15-20 months | >36 | 31-36 | <31 |
| 21-30 months | >38 | 34-38 | <32 |
| > 31 months | >39 | 34-39 | <34 |

ICA BULL EVALUATION PROGRAM INFORMATION

Terms and Conditions

Announcements:

From the auction block shall take precedence over information in the sale catalog.

Bidding:

Each animal on which there are two or more bids will be sold to the higher bidder.

Sale Order:

Bulls are sold in breed rotation based on performance within breed.

Handling Certificates:

Signed certificates available at settlement.

Health Certificates:

Signed certificates available at settlement.

ICA gives no warranty, expressed or implied, including any warranty of merchantability or fitness for particular purposes. All guarantees are between the buyer and seller. ICA acts only as a sales agent. Bulls listed as purebreds or eligible for registry are so guaranteed by the seller, ICA gives no warranty as to the breed purity of bulls offered for sale.

Breeding Guarantee:

An official health certificate and semen evaluation certificate, as supplied by seller, will be regarded and accepted by buyer of bull(s) as conclusive evidence of satisfactory health and fertility. Bulls are guaranteed breeders if properly cared for. Any bull that has not proven himself a breeder within six months after sale date, if in healthy condition and meets the health regulations of the State of Iowa may be returned to the seller at the buyer's expense. The seller reserves the privilege to try for a period of six months to prove the bull is a breeder. Should the bull fail to prove a breeder in the specified time period, the seller will refund the full purchased price, which will be considered as full settlement and satisfaction of all claims. All complaints regarding breeding problems must be reported in writing by the buyer to the seller within six months.

Contract:

The above terms and guarantee shall constitute a contract between the buyer and the seller of each bull sold.

Insurance:

American Livestock Insurance Company offers insurance coverage on bulls purchased. Rates are: 60 Day- \$3.00/\$100; 6 months-\$4.00/\$100; 1 year - \$6.00/\$100. Insurance applications are available in the auction barn office.

Liability:

All persons who attend the sale do so at their own risk. The Iowa Cattlemen's Association and the sale barn assume no liability, legal or otherwise, for any accidents, which may occur.

Iowa Cattlemen's Association
Bull & Heifer Evaluation Program
2055 Ironwood Court • P.O. Box 1490
Ames, Iowa 50014



**FIRST CLASS
DO NOT DELAY!**

**Access the ICA Seedstock
Testing & Sale Info...**

24/7

www.iacattlemen.org

**PLEASE BRING THIS
CATALOG TO THE SALE!**

Join us March 22, 2010 at Bloomfield Livestock!

Keep an eye out!

2

**MORE SALES
THIS YEAR!**

Dunlap Bull Sale

April 17, 2010 • 6:30 p.m.

**Tama Open Heifer
& Bull Sales**

May 7, 2010
Heifers at 6 p.m.
Bulls to follow

