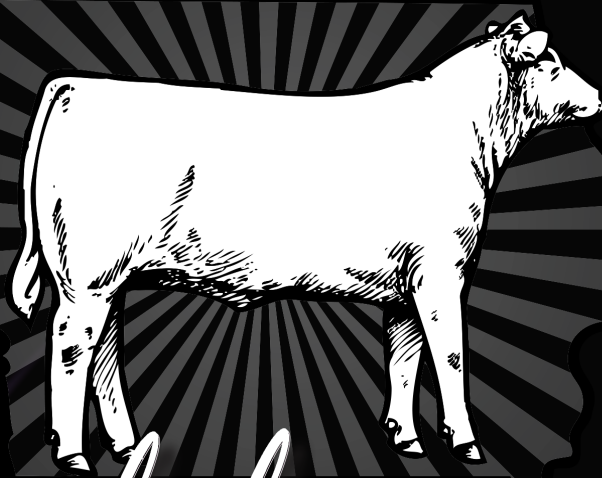


★ ★ ★ ★ ★
IOWA CATTLEMEN'S
ASSOCIATION



Symbol of
EXCELLENCE
PERFORMANCE BULL SALE

MONDAY, APRIL 8, 2024
CRESTON LIVESTOCK AUCTION
6:30 P.M.

Phenotypic Feed Efficiency

Understanding Data Outputs

Production efficiency is one goal in the selection and development of livestock; however, there are two underlying philosophies from which one may define “efficient” and direct future outcomes.

The first is *maintenance* efficiency. This is of primary importance in those cow herds where an efficient cow is considered one that can subsist on low inputs and yet provide a respectable calf each year. The second is *production* efficiency which generally is applied to feedlot cattle where the goal is minimal pounds of feed and maximum edible pounds of output. These two efficiencies may not be the same because low maintenance cows might tend to be easy fleshing and earlier maturing while the feedlot efficient counterparts may be larger, leaner and faster growing.

Feed efficiency is defined in many ways including the newer terms of RFI (residual feed intake) and R-ADG (residual average daily gain.) A discussion of these methods follows descriptions of the simpler efficiency evaluations.

Ranking on Phenotypic Residual Average Daily Gain													
<i>Fed 5/18/2010 through 7/27/2010 70 days</i>													
12 Rib													
RADG Rank	Ear Tag	Start Wt.	End Wt.	ADG	R-ADG ⁴	Fat Cover	DMI	Adj. DMI ⁵	RFI ³	RFI Rank	Raw F:G ¹	Adj. F:G ²	
1	HA403	800	969	2.42	0.86	0.41	19.1	-1.7	-1.79	2.00	7.91	8.39	
2	HA08	942	1136	2.76	0.23	0.50	20.9	0.4	-1.07	3.00	7.57	7.34	
3	HAJ73	984	1187	2.89	0.16	0.62	24.8	0.3	2.46	8.00	8.56	8.10	
4	HA15	920	1118	2.83	0.00	0.41	23.3	0.7	1.41	6.00	8.23	8.07	
5	HA6432	816	923	1.53	-0.03	0.44	21.9	1.1	1.65	7.00	14.37	15.36	
6	HA35	982	1161	2.55	-0.13	0.51	19.8	0.8	-2.20	1.00	7.77	7.40	
7	HA85	1058	1181	1.75	-0.46	0.80	21.4	-0.8	-0.39	4.00	12.22	11.33	
8	HA04	746	807	0.86	-0.63	0.19	19.2	-0.9	-0.07	5.00	22.43	25.51	

Feed Conversion¹ (F:G) = pounds of feed (on a 100% dry matter basis) required for one pound of live weight gain

(Feed Dry Matter / Weight Gain.)

Generally this measure is used in commercial feedyards to indicate efficiency. This value makes no adjustment for diet energy content or age/weight differences in measured animals. It's simply raw pounds of feed required per raw pounds of weight retained. Because of this, it is proper to use this type of measure only with cattle of similar age on the same ration. A lower value is desired.

Feed Efficiency (G:F) = pounds of live weight gain observed per unit of feed dry matter consumed. This is the reciprocal of “Feed Conversion” and has the same issues. These terms often are used interchangeably and allow users to arrive at the same conclusion. A higher value is desired.

Adjusted Feed Conversion² This value is the base Feed:Gain value multiplied by the contemporary group's metabolic weight divided by the individual's metabolic weight. The formula is as follows:

(Group Avg Wt.⁷⁵ / Individual Wt.⁷⁵) x Individual's Feed to Gain.

Note that this adjustment attempts to remove the age or size differences of the animal when put on test. This currently is the standard of feed conversion efficiency used by the Beef Improvement Federation. A lower value is desired.

RFI³ (Residual Feed Intake): This is defined as the difference between actual feed intake and that predicted on the basis of the animal's gain and maintenance requirements for its body weight. The calculation is more complex because mathematical statistics are used to determine the RFI value. A prediction equation is developed by using regression of the actual feed intakes, gains and average weights on test of the animal's contemporaries. The calculation factors in both maintenance efficiency (the easy keeper concept) and production efficiency (pounds in vs. pounds out like the normal Feed:Gain equation).

An average animal would have an RFI of “0”. Animals with a negative RFI value are favored because they have consumed less feed for their weight and gain than

the average of their herd mates. Animals with a positive RFI number would be consuming more feed for their weight and gain than the average of their herd mates.



Measurement of individual intake

For the RFI calculation to be relevant in the evaluation of potential breeding stock, it's of utmost importance that it be calculated in the context of the weaning contemporary group and used in index selection (multi-trait selection.)

This is important because the pre-weaning environment, pasture management, creep feed availability and age of dam (milking ability as seen between first calf heifers and older cows) has been shown to have a marked effect on the feed conversion outcomes in Iowa State

University trials. This issue is not seen in the same light by all because it appears that many centralized test stations tend to create a "feeding contemporary group" and evaluate cattle in that context. For this reason test stations try to equalize pre-test environments by having a 3-to-5 week warm-up period.

R-ADG⁴ (Residual Average Daily Gain): This is defined as the difference between actual weight gain and the gain predicted on the basis of dry matter intake, maintenance of body weight and fat cover. Like RFI, a regression equation is developed using the actual gains, feed intakes, average weights on test and fat cover of an animal's herd mates. This unique equation is then used to calculate the individual R-ADG.

An average animal has an R-ADG of "0." Animals with a positive R-ADG value are favored because they have higher daily gains for the amount of feed consumed and their body composition (% fat.) Animals with a negative R-ADG value are unfavorable because they have lower daily gains for the amount of feed consumed and their body composition. Again like RFI, relevance of this evaluation depends on a comparison of animals from the same weaning contemporary group or put through a substantial warm-up period prior to their feed intake and gain test.

Adj. DMI⁵ (Adjusted Dry Matter Intake): This is defined as the feed dry matter intake adjusted by multiplying the contemporary group's average mid-point metabolic weight, and then dividing by the individual's mid-point metabolic weight. The final value is the difference by subtracting out the contemporary group average. A lower value is desired.

Comparison of feed efficiency terms

Method	More Desirable	Less Desirable	Difference
Raw F:G – Raw Feed Conversion: usually on dry matter basis (lbs feed/lb of gain)	Lower values Example: 4.5 lbs	Higher values Example 7.5 lbs	Example: 3.0 lbs of feed
Adj. F:G – Adjusted Feed Conversion: usually on dry matter basis (lbs feed/lb of gain)	Lower values Example: 4.5 lbs	Higher values Example: 6.5 lbs	Example: 2 lbs of dry matter
RFI – Residual Feed Intake: usually on dry matter basis	Negative values Example: -1.7	Positive values Example: +1.5	Example: 3.2 lbs of feed
R-ADG – Residual Average Daily Gain: usually on lbs gained per day	Positive values Example: +0.86	Negative values Example: --.63	Example: 1.49 lbs of average daily gain
Adj. DMI – Adjusted Dry Matter Intake: should be on dry matter basis	Negative values Example: -0.9	Positive values Example: +0.8	Example: 1.7 lbs of feed

File: Animal Science 11

Prepared by Garland Dahlke, Daryl Strohhahn and Sherry Hoyer, Iowa Beef Center, Iowa State University.

IOWA STATE UNIVERSITY
University Extension

... and justice for all

The U.S. Department of Agriculture (USDA) prohibits discrimination in all its programs and activities on the basis of race, color, national origin, gender, religion, age, disability, political beliefs, sexual orientation, and marital or family status. (Not all prohibited bases apply to all programs.) Many materials can be made available in alternative formats for ADA clients. To file a complaint of discrimination, write USDA, Office of Civil Rights, Room 326-W, Whitten Building, 14th and Independence Avenue, SW, Washington, DC 20250-9410 or call 202-720-5964. Issued in furtherance of Cooperative Extension work, Acts of May 8 and June 30, 1914, in cooperation with the U.S. Department of Agriculture. Gerald A. Miller, interim director, Cooperative Extension Service, Iowa State University of Science and Technology, Ames, Iowa.

Feed Efficiency

Ear Tag	Feed Cost per Pound of Gain (\$0.125/lb. DM)	Cost of Gain x 600 lbs.	Cost of Gain Rank	RADG	RADG Rank	RFI	RFI Rank	11/10/23 Start Wt.	2/8/24 End Wt.	ADG	DMI	Raw F:G	Adj. F:G
101	\$0.873	\$523.64	31	-0.29	30	1.62	27	640	981	3.78	23.9	6.32	6.98
102	\$1.036	\$621.65	39	-0.95	39	-0.97	14	672	885	2.36	16.4	6.95	8.29
103	\$0.843	\$505.53	30	-0.30	32	2.86	36	879	1244	4.06	29.6	7.30	6.74
104	\$0.751	\$450.70	16	0.11	16	1.13	23	822	1222	4.45	28.6	6.42	6.01
105	\$0.757	\$454.05	17	0.21	11	2.46	34	819	1243	4.71	30.9	6.55	6.05
106	\$0.713	\$427.65	11	0.14	13	-1.90	12	852	1213	4.01	24.3	6.06	5.70
107	\$0.688	\$412.86	7	0.20	12	-3.00	6	719	1074	3.95	21.1	5.34	5.50
110	\$0.944	\$566.70	36	-0.69	38	2.49	35	853	1159	3.40	26.4	7.76	7.56
111	\$0.705	\$423.09	9	0.11	15	-2.65	8	802	1151	3.88	22.3	5.76	5.64
112	\$0.627	\$376.45	3	0.55	4	-4.08	5	674	1059	4.28	20.6	4.82	5.02
113	\$0.767	\$460.49	21	-0.18	27	-2.48	10	741	1046	3.39	19.8	5.84	6.14
115	\$0.722	\$432.91	13	0.09	17	-2.54	9	745	1084	3.77	21.2	5.64	5.77
116	\$0.707	\$423.93	10	0.37	7	-0.42	17	750	1159	4.54	26.4	5.80	5.65
117	\$0.739	\$443.27	15	0.28	8	1.70	28	807	1231	4.72	29.9	6.35	5.91
118	\$0.702	\$421.21	8	0.44	6	-0.94	16	664	1069	4.51	24.4	5.43	5.62
119	\$0.969	\$581.12	38	-0.64	37	6.13	39	794	1150	3.96	31.3	7.91	7.75
120	\$0.917	\$550.10	33	-0.29	31	2.32	33	547	885	3.76	23.1	6.15	7.33
121	\$0.549	\$329.14	1	1.13	1	-5.46	1	685	1132	4.97	22.0	4.43	4.39
122	\$0.816	\$489.45	25	-0.27	29	2.17	31	940	1305	4.06	29.7	7.32	6.53
123	\$0.759	\$455.15	18	-0.04	20	0.19	18	888	1258	4.12	27.3	6.62	6.07
124	\$0.820	\$491.78	26	-0.12	24	1.82	29	729	1100	4.13	26.7	6.47	6.56
125	\$0.832	\$499.23	29	-0.16	26	1.23	24	694	1047	3.93	24.9	6.33	6.66
126	\$0.795	\$477.25	24	-0.02	19	0.43	20	722	1080	3.98	24.7	6.20	6.36
127	\$0.766	\$459.54	20	-0.24	28	-2.72	7	712	1011	3.33	18.9	5.68	6.13
128	\$0.825	\$494.80	27	-0.11	22	0.51	21	605	953	3.87	22.6	5.85	6.60
129	\$0.644	\$386.21	4	0.28	9	-4.46	3	886	1241	3.94	21.9	5.56	5.15
130	\$0.770	\$461.78	22	0.14	14	0.78	22	680	1069	4.32	25.7	5.95	6.16
138	\$0.663	\$397.97	5	0.85	3	1.41	25	743	1244	5.57	32.0	5.74	5.31
143	\$0.725	\$434.99	14	-0.15	25	-4.22	4	715	998	3.15	16.8	5.32	5.80
144	\$0.669	\$401.31	6	0.46	5	-2.37	11	732	1126	4.38	23.5	5.37	5.35
148	\$0.951	\$570.30	37	-0.48	34	5.37	38	723	1083	4.01	29.7	7.42	7.60
149	\$0.828	\$497.03	28	0.02	18	1.57	26	591	963	4.13	24.5	5.92	6.63
150	\$0.920	\$552.24	35	-0.35	33	5.14	37	720	1093	4.14	30.0	7.23	7.36
155	\$0.559	\$335.47	2	1.00	2	-5.30	2	865	1300	4.83	24.2	5.00	4.47
156	\$0.716	\$429.84	12	0.21	10	-0.96	15	854	1234	4.23	26.1	6.17	5.73
157	\$0.913	\$547.74	32	-0.55	35	1.93	30	808	1122	3.49	25.5	7.32	7.30
158	\$0.764	\$458.42	19	-0.09	21	-1.25	13	820	1157	3.75	23.5	6.27	6.11
160	\$0.918	\$550.70	34	-0.57	36	2.21	32	827	1142	3.51	26.1	7.45	7.34
161	\$0.786	\$471.68	23	-0.12	23	0.26	19	784	1141	3.97	25.3	6.38	6.29
Avg	\$0.781	\$468.39	20	0.00	20	0.00	20	756	1119	4.03	24.9	6.21	6.25
Min	\$0.549	\$329.14	1	-0.95	1	-5.46	1	547	885	2.36	16.4	4.43	4.39
Max	\$1.036	\$621.65	39	1.13	39	6.13	39	940	1305	5.57	32.0	7.91	8.29

Angus Bulls

103 **SUMMIT RAINDANCE 2329**
 Birth Date: 2/11/23 Bull 20740620 Tattoo: 2329
 Consignor: Summit Farms

Sire SAV RAINDANCE 6848
 SAV BLACKCAP MAY 4136

ANGUSGS
 Powered by Neogen GeneSeek

Dam SUMMIT BLACKCAP 2087
 SUMMIT MS BLACKCAP E29

CED	BW	WW	YW	CEM	MM	MWW	\$M	\$W	%RP	RETAIL ADJ
5	2.2	60	108	3	23	55	39	54	64.00	-3.28
\$F	\$G	\$B	\$C	\$EN	CWT	MARB	BF	REA	MARB	ADJ MARB
93	30	123	199	-11	49	0.29	0.050	0.57	3.84	-2.74

If you're looking to add pounds to your calf crop make sure to look. Big weaning weight and did it with no creep feed.



SAV RAINDANCE 6848 - SIRE OF LOT 103 & 104

104 **SUMMIT RAINDANCE 2345**
 Birth Date: 2/6/23 Bull 20740619 Tattoo: 2345
 Consignor: Summit Farms

Sire SAV RAINDANCE 6848
 SAV BLACKCAP MAY 64136

ANGUSGS
 Powered by Neogen GeneSeek

Dam NICHOLS QUEEN MOTHER D280
 NICHOLS STANDARD A435
 NICHOLS QUEEN MOTHER A 397

CED	BW	WW	YW	CEM	MM	MWW	\$M	\$W	%RP	RETAIL ADJ
18	-2.9	50	99	12	35	8	72	65	66.12	-2.15
\$F	\$G	\$B	\$C	\$EN	CWT	MARB	BF	REA	MARB	ADJ MARB
82	40	122	230	6	40	0.41	0.044	0.79	3.16	-3.39

A calving ease bull that will still add pounds at weaning.

ACT BW	205 WT
86	704
ACT WT	205 RATIO
1244	89
ADG	ADG RATIO
4.06	101
WDA	WDA RATIO
3.44	88
SCROTAL	PELVIC HEIGHT
36	12
PELVIC WIDTH	PELVIC PM
12	144
PELVIC AREA	REA ADJ
144.8	13



DEER VALLEY GROWTH FUND - SIRE OF LOT 105

105 **SUMMIT GROWTH FUND 2354**
 Birth Date: 2/11/23 Bull 20740624 Tattoo: 2354
 Consignor: Summit Farms

Sire BASIN PAYWEIGHT 1682
 DEER VALLEY GROWTH FUND
 DEER VALLEY RITA 36113

ANGUSGS
 Powered by Neogen GeneSeek

Dam SUMMIT PRIDE 2047
 BROOKING BANKNOTE 4040
 NICHOLS PRIDE D429

CED	BW	WW	YW	CEM	MM	MWW	\$M	\$W	%RP	RETAIL ADJ
2	3.8	92.0	158	9	25	87	67	78	65.83	-2.30
\$F	\$G	\$B	\$C	\$EN	CWT	MARB	BF	REA	MARB	ADJ MARB
126	42	168	285	-28	74	0.47	0.023	0.61	3.71	-2.86

The Growth Fund son that will add value to your calf crop. Top 2% for weaning and yearling EPD's. He's one that you can feed his sons with a lot of growth and keep his daughters to make great replacements.

ACT BW	205 WT
92	820
ACT WT	205 RATIO
1243	100
ADG	ADG RATIO
4.71	117
WDA	WDA RATIO
3.43	88
SCROTAL	PELVIC HEIGHT
36	11
PELVIC WIDTH	PELVIC PM
12.5	137.5
PELVIC AREA	REA ADJ
138.3	14.0

107 **LB STUNNER 329**
 Birth Date: 3/25/23 Bull 20745918 Tattoo: 329
 Consignor: Spencers Grove Farm

Sire MUSGRAVE 316 STUNNER
 CARTER STUNNER 1961
 RJ HCC KEYMURA KATY 219G

ANGUSGS
 Powered by Neogen GeneSeek

Dam LB KARMEN 429
 PA POWER TOOL 9108
 BTC KARMEN 215

CED	BW	WW	YW	CEM	MM	MWW	\$M	\$W	%RP	RETAIL ADJ
5	1.4	58.0	88	4	26	40	66	62	67.56	-1.37
\$F	\$G	\$B	\$C	\$EN	CWT	MARB	BF	REA	MARB	ADJ MARB
65	60	124	227	-5	33	0.90	0.052	0.45	4.63	-1.97

Good Stunner bull from the line of Musgrave and Carter Stunner sires with good \$Values.

ACT BW	205 WT
75	864
ACT WT	205 RATIO
1074	119
ADG	ADG RATIO
3.95	98
WDA	WDA RATIO
3.36	86
SCROTAL	PELVIC HEIGHT
38.5	10
PELVIC WIDTH	PELVIC PM
11.5	115
PELVIC AREA	REA ADJ
126.3	14.6



CARTER STUNNER 1961 - SIRE OF LOT 107

110

DLR BRILLIANCE L611

Birth Date: 3/19/23 Bull 20760805 Tattoo: L611

Consignor: DLR Farm

*Sire*JINDRA BLACKOUT
JINDRA BRILLIANCE 479
JINDRA BLACKBIRD LASSY 7142**ANGUS**
Powered by Neogen GeneSeek*Dam*SFA WAR PARTY 10
DLR BLACKCAP JUDY 6311
SF BLACKCAP JUDY 3111

CED	BW	WW	YW	CEM	MM	MWW	\$M	\$W
6	0.8	69.0	116	9	26	100	38	63
\$F	\$G	\$B	\$C	\$EN	CWT	MARB	BF	REA
114	43	157	242	-35	64	0.44	0.021	0.73

ACT BW	205 WT
70	766
ACT WT	205 RATIO
1159	110
ADG	ADG RATIO
3.4	84
WDA	WDA RATIO
3.56	92
SCROTAL	PELVIC HEIGHT
37	12
PELVIC WIDTH	PELVIC PM
12.0	144
PELVIC AREA	REA ADJ
153.8	14.3
%RP	RETAIL ADJ
66.49	-1.95
MARB	ADJ MARB
3.59	-2.98

Lot #110 is a docile solid footed bull with an extra rib! His Werner War Party dam is a very docile and strong milking cow with a near perfect udder. Be sure to give him a look if you're looking to put some length and frame in your replacement heifers and feeder cattle.

111

DLR PERFECTION L86

Birth Date: 3/5/23 Bull 20760809 Tattoo: J86

Consignor: DLR Farm

*Sire*JINDRA PERFECTION
JINDRA PERFECTION 826 2340
JINDRA ELBA J664 826**ANGUS**
Powered by Neogen GeneSeek*Dam*JINDRA BRILLIANCE 479
DLR ELINE BECKY J869
DLR ELINE BECKY 8693

CED	BW	WW	YW	CEM	MM	MWW	\$M	\$W
1	3.6	69.0	118	14	17	45	64	54
\$F	\$G	\$B	\$C	\$EN	CWT	MARB	BF	REA
86	44	130	233	-2	46	0.46	-0.017	0.51

ACT BW	205 WT
67	759
ACT WT	205 RATIO
1151	109
ADG	ADG RATIO
3.88	96
WDA	WDA RATIO
3.39	87
SCROTAL	PELVIC HEIGHT
38	12
PELVIC WIDTH	PELVIC PM
12.5	150
PELVIC AREA	REA ADJ
156.3	13.5
%RP	RETAIL ADJ
66.07	-2.17
MARB	ADJ MARB
3.2	-3.36

Wow! Lot #111 is an attractive, thick made, stylish bull that is correct on all four corners. He's been a treat to be around since he was baby and handles very nicely. He will put pounds in your calf crop and add plenty of eye appeal! He is in the right condition to cover cows and will come back from breeding looking like the bull you bought.

112

OTTO CONSTITUTION 304

Birth Date: 3/27/23 Bull 20693345 Tattoo: 304

Consignor: Otto Cattle Company

*Sire*POSS RAWHIDE
POSS RITA 5116**ANGUS**
Powered by Neogen GeneSeek*Dam*SCHIEFELBEIN ATTRACTIVE 4565
BROOKDALE PRIDE 511
GB P74D

CED	BW	WW	YW	CEM	MM	MWW	\$M	\$W
12	0.9	85.0	143	10	28	73	76	85
\$F	\$G	\$B	\$C	\$EN	CWT	MARB	BF	REA
113	68	181	311	-23	68	0.94	0.037	0.81

ACT BW	205 WT
84	650
ACT WT	205 RATIO
1059	100
ADG	ADG RATIO
4.28	106
WDA	WDA RATIO
3.33	86
SCROTAL	PELVIC HEIGHT
34	12
PELVIC WIDTH	PELVIC PM
12.0	144
PELVIC AREA	REA ADJ
155.8	14.6
%RP	RETAIL ADJ
68.37	-0.94
MARB	ADJ MARB
3.68	-2.89

Dam ratios BR 1-107 WR 1-100
Nicely balanced bull! High calving ease, tremendous growth and carcass EPDs, and Top 1% docility make this a bull to take a good look at! He is sired by the sought after Poss Ratified, the second high-selling bull on the 2022 Poss Angus sale. He offers a great combination of fleshing ability, \$Maternal, and end product merit. His dam, sired by Schiefelbein Attractive, is a very docile young cow that did a great job raising him as her first calf and still bred back first service.



MOGCK EMPIRE 110 - SIRE OF LOT 113

113

OTTO DYNASTY 305

Birth Date: 4/2/23 Bull 20689964 Tattoo: 305

Consignor: Otto Cattle Company

*Sire*MOGCK FORTRESS 517
MOGCK EMPIRE 110
MOGCK ERALINE 1748**ANGUS**
Powered by Neogen GeneSeek*Dam*DIABLO DELUX 1104
BLKCP EMPRESS ELLSTON Z159
BLKCP EMPRESS ELLSTON L265

CED	BW	WW	YW	CEM	MM	MWW	\$M	\$W
9	1	90.0	161	10	20	110	60	75
\$F	\$G	\$B	\$C	\$EN	CWT	MARB	BF	REA
103	78	181	295	-37	67	1.12	0.015	0.72

ACT BW	205 WT
74	699
ACT WT	205 RATIO
1046	108
ADG	ADG RATIO
3.39	84
WDA	WDA RATIO
3.35	86
SCROTAL	PELVIC HEIGHT
33	8.5
PELVIC WIDTH	PELVIC PM
9.5	80.8
PELVIC AREA	REA ADJ
94	12.3
%RP	RETAIL ADJ
65.95	-2.24
MARB	ADJ MARB
4.95	-1.66

Dam ratios BR 1-95 WR 1-108
Phenomenal growth EPDs on this bull combined with heifer safe calving ease! Top 3% WW, Top 2% YW, and Top 4% RADG. His sire, Mogck Empire, was the high-selling bull on the Mogck and Sons Angus 2021 sale. He offers high calving ease and tremendous growth. His dam has a perfect udder, nice disposition, and bred back first service while raising this whopper of a bull calf. She is also a maternal sibling to the powerful Hoover Know How.



POSS RATIFIED - SIRE OF LOT 112



T C A HOLLYWOOD 351

Birth Date: 3/24/23 Bull 20700713 Tattoo: 351

Consignor: Twin Creek Angus

Sire

S S ENFORCER E812
WILLIAMS HOLLYWOOD 700-380
POWELL ERICA 7312



Dam

44 LEADING ROLE 6273
T C A LEAD ROLE BLACKCAP 908
T C A ACCRUEL BLACKCAP 605

CED	BW	WW	YW	CEM	MM	MWW	\$M	\$W
9	-0.3	62.0	102	13	20	70	49	57
\$F	\$G	\$B	\$C	\$EN	CWT	MARB	BF	REA
98	49	147	240	-17	49	0.54	-0.006	0.68

A very balanced trait Hollywood son. Will make great replacement females. Excellent foot scores, docility, and other maternal traits.

ACT BW	205 WT
78	747
ACT WT	205 RATIO
1084	117
ADG	ADG RATIO
3.77	93
WDA	WDA RATIO
3.38	87
SCROTAL	PELVIC HEIGHT
37.5	12
PELVIC WIDTH	PELVIC PM
13.0	156
PELVIC AREA	REA ADJ
167	15.3
%RP	RETAIL ADJ
69.72	-0.21
MARB	ADJ MARB
4.73	-1.87



T C A BREAKTHROUGH 353

Birth Date: 3/25/23 Bull 20699107 Tattoo: 353

Consignor: Twin Creek Angus

Sire

G A R PROPHET K263
BEAL BREAKTHROUGH
H P C A SURE FIRE S6



Dam

WR JOURNEY-1X74
T C A JOURNEY LULU 705
T C A ACCRUEL LULU 513

CED	BW	WW	YW	CEM	MM	MWW	\$M	\$W
10	1.4	81.0	141	12	28	64	74	79
\$F	\$G	\$B	\$C	\$EN	CWT	MARB	BF	REA
115	82	198	331	-18	69	1.02	-0.012	1.29

Heifer safe. Bulls that cover all the bases are hard to find. This bull does it all! Dam is a great producer for us. \$C 343 Top 2%.

ACT BW	205 WT
83	754
ACT WT	205 RATIO
1159	118
ADG	ADG RATIO
4.54	113
WDA	WDA RATIO
3.62	93
SCROTAL	PELVIC HEIGHT
35.5	11
PELVIC WIDTH	PELVIC PM
12.0	132
PELVIC AREA	REA ADJ
143.3	15.5
%RP	RETAIL ADJ
68.46	-0.89
MARB	ADJ MARB
5.28	-1.34



T C A HOLLYWOOD 352

Birth Date: 3/24/23 Bull 20700171 Tattoo: 352

Consignor: Twin Creek Angus

Sire

S S ENFORCER E812
WILLIAMS HOLLYWOOD 700-380
POWELL ERICA 7312



Dam

BAR R JET BLACK 5063
T C A JET BLACKLASS 902
T C A IMPACT BLACKLASS 204

CED	BW	WW	YW	CEM	MM	MWW	\$M	\$W
6	2.5	103.0	173	0	15	127	60	78
\$F	\$G	\$B	\$C	\$EN	CWT	MARB	BF	REA
127	93	220	345	-43	84	1.35	0.029	1.05

Huge Growth WW 103 Top 1%, 173 YT Top 1% along with moderate birth. This bull does it all! Check out his carcass and maternal traits. \$C 345 Top 2%. Our top bull for weaning weight at 802 lbs. We do not creep feed.

ACT BW	205 WT
84	802
ACT WT	205 RATIO
1231	125
ADG	ADG RATIO
4.72	117
WDA	WDA RATIO
3.83	99
SCROTAL	PELVIC HEIGHT
38.5	11.5
PELVIC WIDTH	PELVIC PM
12.5	143.8
PELVIC AREA	REA ADJ
154.8	16.2
%RP	RETAIL ADJ
67.94	-1.17
MARB	ADJ MARB
6.66	0



T C A GALLILEO 357

Birth Date: 4/14/23 Bull 20699110 Tattoo: 357

Consignor: Twin Creek Angus

Sire

T C A GALLILEO
GB FIREBALL 672
T C A ACCOUNTANT LULU 111



Dam

SYDGEN ENHANCE 7639
T C A ENHANCE BLACKLASS 904
T C A RAMPAGE BLACKLASS 706

CED	BW	WW	YW	CEM	MM	MWW	\$M	\$W
6	2.2	77.0	134	10	33	67	70	77
\$F	\$G	\$B	\$C	\$EN	CWT	MARB	BF	REA
125	97	222	258	-22	75	1.31	-0.023	1.18

All facets of beef production covered in this young bull. Birth all the way to the rail plus maternal excellence. This is all summed up in his Top 1% rank for \$C 362.

ACT BW	205 WT
83	780
ACT WT	205 RATIO
1069	122
ADG	ADG RATIO
4.51	112
WDA	WDA RATIO
3.56	92
SCROTAL	PELVIC HEIGHT
32.5	10
PELVIC WIDTH	PELVIC PM
10.0	100
PELVIC AREA	REA ADJ
116.3	15.6
%RP	RETAIL ADJ
70.12	0.00
MARB	ADJ MARB
3.97	-2.61



T C A BREAKTHROUGH 354

Birth Date: 3/26/23 Bull 20699108 Tattoo: 354

Consignor: Twin Creek Angus

Sire

G A R PROPHET K263
BEAL BREAKTHROUGH
H P C A SURE FIRE S6



Dam

V A R FOREMAN 3339
T C A FOREMEN BLACKCAP 804
T C A ACCRUEL BLACKCAP 605

CED	BW	WW	YW	CEM	MM	MWW	\$M	\$W
13	-0.7	77.0	130	13	45	30	92	95
\$F	\$G	\$B	\$C	\$EN	CWT	MARB	BF	REA
102	84	186	333	-10	66	1.14	0.022	1.15

Calving ease specialist with top end growth plus all the extras top end carcass along with maternal. His 95\$ m Top 2% and \$C 348 Top 2%.

ACT BW	205 WT
82	783
ACT WT	205 RATIO
1150	122
ADG	ADG RATIO
3.96	98
WDA	WDA RATIO
3.61	93
SCROTAL	PELVIC HEIGHT
33.5	11
PELVIC WIDTH	PELVIC PM
12.0	132
PELVIC AREA	REA ADJ
143.5	16.0
%RP	RETAIL ADJ
67.66	-1.32
MARB	ADJ MARB
6.49	-0.16

121**KLB RESOLVE 3568**

Birth Date: 3/15/23 Bull 20754760 Tattoo: 3568

Consignor: Brandt Farms

*Sire*SYDGEN MULTI TOOL 2432
SYDGEN RESOLVE 7132
SYDGEN DIXIE ERICA 5104**ANGUSGS**
Powered by Neogen GeneSeek*Dam*EXAR TURNING POINT 3510B
EXAR BLACKCAP 5686
EXAR BLACKCAP 1703

CED	BW	WW	YW	CEM	MM	MWW	\$M	\$W
4	3.4	61.0	122	2	38	80	43	55
\$F	\$G	\$B	\$C	\$EN	CWT	MARB	BF	REA
92	56	149	236	-32	47	0.82	0.023	0.31

ACT BW	205 WT
80	765
ACT WT	205 RATIO
1132	93
ADG	ADG RATIO
4.97	123
WDA	WDA RATIO
3.43	88
SCROTAL	PELVIC HEIGHT
36.5	13
PELVIC WIDTH	PELVIC PM
16.0	208
PELVIC AREA	REA ADJ
216.8	12.8
%RP	RETAIL ADJ
65.46	-2.50
MARB	ADJ MARB
3.65	-2.92

Out of our Blackcap donor from Express and SydGen, this bull blends the best of both worlds into a stout, eye appealing and docile package. Sired by our resident herd sire Resolve that works for us, Sydenstricker Genetics and ST Genetics, you can count on the predictability bred into this one. Class up a set of feeder steers or replacement females in one generation with this guy!

123**WAF CONFIDENCE PLUS 2K**

Birth Date: 2/25/23 Bull 20653224 Tattoo: 2k

Consignor: Wiederin Angus Farm

*Sire*CONNEALY CONFIDENCE PLUS
BA7 OAKS CONFIDENCE PLUS J11
ERICA OF ELLSTON T220**ANGUSGS**
Powered by Neogen GeneSeek*Dam*BA REMEMBER ME 603
WAF BARBARA ROSE 94
WAF BARBARA ROSE 50

CED	BW	WW	YW	CEM	MM	MWW	\$M	\$W
9	0.4	64.0	112	13	34	43	82	72
\$F	\$G	\$B	\$C	\$EN	CWT	MARB	BF	REA
92	44	136	258	-11	54	0.53	0.027	0.52

ACT BW	205 WT
80	765
ACT WT	205 RATIO
1258	99
ADG	ADG RATIO
4.12	102
WDA	WDA RATIO
3.61	93
SCROTAL	PELVIC HEIGHT
35.5	11.5
PELVIC WIDTH	PELVIC PM
12.0	138
PELVIC AREA	REA ADJ
142.3	12.7
%RP	RETAIL ADJ
62.72	-3.97
MARB	ADJ MARB
4.16	-2.42

W 80 lbs., ADJ WW 765. Dam has two calves 104 ratio. A calving ease prospect with high M & W values along with Top 1% docility. Sire J11 is a flushmate to Alta Genetics lead off Bull Bold Ruler out of the great Hoover bred T220 cow.

122**WAF NO DOUBT 3K**

Birth Date: 3/9/23 Bull 20653221 Tattoo: 3K

Consignor: Wiederin Angus Farm

*Sire*HOOVER NO DOUBT
7 OAKS MULTIVISION
ERICA OF ELLSTON M38**ANGUSGS**
Powered by Neogen GeneSeek*Dam*MOHNEN SOUTH DAKOTA 402
WAF BARBARA ROSE 65
WAF BARBARA ROSE 39

CED	BW	WW	YW	CEM	MM	MWW	\$M	\$W
4	3	79.0	137	9	31	72	72	75
\$F	\$G	\$B	\$C	\$EN	CWT	MARB	BF	REA
95	71	166	287	-24	61	1.02	0.040	0.72

ACT BW	205 WT
83	814
ACT WT	205 RATIO
1305	106
ADG	ADG RATIO
4.06	101
WDA	WDA RATIO
3.88	100
SCROTAL	PELVIC HEIGHT
40	12.5
PELVIC WIDTH	PELVIC PM
14.0	175
PELVIC AREA	REA ADJ
182.3	15.7
%RP	RETAIL ADJ
65.83	-2.30
MARB	ADJ MARB
5.62	-1.01

BW 83 lbs., ADJ WW 814, Ratio 106 Dam has six calves 99 WW ratio. Top 15% for WW and YW Top 20% for marbling, W, combined \$C values for the entire breed. Maternal granddam Rose 39 is also granddam of Lot 123. Barbara Rose cow line has been a stellar line in our program for almost 80 years.



AF MAGNUM A18084 - SIRE OF LOT 124

124**CMF MAGNUM P40**

Birth Date: 3/24/23 Bull 20775765 Tattoo: P40

Consignor: Carmar Farms

*Sire*MEAD MAGNITUDE
AF MAGNUM A18084
AF MISS ANNIE 4051**ANGUSGS**
Powered by Neogen GeneSeek*Dam*CMF SS OBJECTIVE T05
CMF BLACK PERFECTION L08
CMF BLACK PERFECTION T85

CED	BW	WW	YW	CEM	MM	MWW	\$M	\$W
14	-1.7	79.0	138	12	28	NA	68	72
\$F	\$G	\$B	\$C	\$EN	CWT	MARB	BF	REA
102	59	161	277	-35	57	0.75	0.013	0.73

ACT BW	205 WT
72	
ACT WT	205 RATIO
1100	
ADG	ADG RATIO
4.13	102
WDA	WDA RATIO
3.43	88
SCROTAL	PELVIC HEIGHT
34	11
PELVIC WIDTH	PELVIC PM
11.0	121
PELVIC AREA	REA ADJ
132	13.6
%RP	RETAIL ADJ
66.21	-2.10
MARB	ADJ MARB
5.3	-1.32

This AF Magnum son is showing real promise and ranks in the Top 5% of the breed in CED and BW and is in the Top 15% in WW and YW. His sire tout's impressive numbers, balancing an individual birth ratio of 96 with a weaning ratio of 105, a yearling ratio of 103, a %IMF ratio of 133, and a URE ratio of 111. There is no doubt this Magnum son will deliver power and performance to your cow herd.

Online Bidding Available at:

LiveAuctions.TV

125**CMF MAN IN BLACK P44**

Birth Date: 3/26/23 Bull 20775993 Tattoo: P44

Consignor: Carmar Farms

*Sire*BAR R JET BLACK 5063
LAR MAN IN BLACK
JMB MAXINE TG 2131**ANGUSGS**
Powered by Neogen GeneSeek*Dam*H&K IMPRESSIVE
CMF ELBA T45

CED	BW	WW	YW	CEM	MM	MWW	\$M	\$W	%RP	RETAIL ADJ
7	1.5	77.0	130	12	23	82	60	66	66.06	-2.18
\$F	\$G	\$B	\$C	\$EN	CWT	MARB	BF	REA	MARB	ADJ MARB
104	54	158	265	-26	53	0.71	0.029	4.00	2.92	-3.63

ACT BW	205 WT
83	674
ACT WT	205 RATIO
1047	104
ADG	ADG RATIO
3.93	97
WDA	WDA RATIO
3.28	85
SCROTAL	PELVIC HEIGHT
37	11
PELVIC WIDTH	PELVIC PM
12.0	132
PELVIC AREA	REA ADJ
143.5	12.8
%RP	RETAIL ADJ
66.06	-2.18
MARB	ADJ MARB
2.92	-3.63



LAR MAN IN BLACK - SIRE OF LOT 125

This Man in Black son is showing real promise and ranks in the Top 20% of the breed in WW and CEM and is in the Top 15% in MH and YH. His sire is an impressive individual performer with a 791 WW (125 ratio), 1,489 YW (118 ratio), 5.54 IMF (107 ratio), and 15.0 RE (113 ratio) and also has an imposing phenotype making for a stout power bull package.

126**CMF ENFORCER P69**

Birth Date: 4/2/23 Bull 20775775 Tattoo: P69

Consignor: Carmar Farms

*Sire*SS ENFORCER E812
SS MISS DAYBREAK K011 3K17**ANGUSGS**
Powered by Neogen GeneSeek*Dam*CMF QUIET LAD Z04
CMF BLACKCAP G80
CMF BLACKCAP B53

CED	BW	WW	YW	CEM	MM	MWW	\$M	\$W	%RP	RETAIL ADJ
3	1.4	69.0	132	6	32	78	54	62	66.83	-1.76
\$F	\$G	\$B	\$C	\$EN	CWT	MARB	BF	REA	MARB	ADJ MARB
98	66	164	267	-28	48	0.86	-0.003	0.70	4.13	-2.45

ACT BW	205 WT
89	
ACT WT	205 RATIO
1080	
ADG	ADG RATIO
3.98	99
WDA	WDA RATIO
3.46	89
SCROTAL	PELVIC HEIGHT
35	10.5
PELVIC WIDTH	PELVIC PM
10.5	110.3
PELVIC AREA	REA ADJ
123.5	13.0
%RP	RETAIL ADJ
66.83	-1.76
MARB	ADJ MARB
4.13	-2.45



SS ENFORCER E812 - SIRE OF LOT 126

This Enforcer son is showing real promise and ranks in the Top 5% of the breed in YH and also is in the Top 20% in RADG, Milk, MH, and YW. His sire tout's impressive numbers and are in the Top 10% of the breed in WW, YW, RADG, Marb, Fat, \$AxJ, \$G, and \$C. There is no doubt this Enforcer son will deliver power and performance to your cow herd.

129**IHCC WARRIOR 3031**

Birth Date: 2/19/23 Bull 20793533 Tattoo: 3031

Consignor: Indian Hills Community College

*Sire*GAR DISCOVERY 4737H
E&B WILDCAT 9402
E&B LADY PLUS 643**ANGUSGS**
Powered by Neogen GeneSeek*Dam*SAV PRESIDENT 6847
IHCC ELLIE 31

CED	BW	WW	YW	CEM	MM	MWW	\$M	\$W	%RP	RETAIL ADJ
9	2.1	69.0	124	9	25	NA	NA	56	65.60	-2.43
\$F	\$G	\$B	\$C	\$EN	CWT	MARB	BF	REA	MARB	ADJ MARB
NA	NA	NA	NA	NA	NA	NA	NA	NA	4.72	-1.88

ACT BW	205 WT
68	
ACT WT	205 RATIO
1241	
ADG	ADG RATIO
3.94	98
WDA	WDA RATIO
3.51	90
SCROTAL	PELVIC HEIGHT
34.5	12
PELVIC WIDTH	PELVIC PM
12.0	144
PELVIC AREA	REA ADJ
146.8	14.2
%RP	RETAIL ADJ
65.60	-2.43
MARB	ADJ MARB
4.72	-1.88

This Wildcat son will bring good spread and calving ease. His genetics trace back to the Werner Family Angus lines and have been improved through an AI-only program facilitated by IHCC Ag students since 2012.

130**KLB RESOLVE 322**

Birth Date: 3/10/23 Bull 20754759 Tattoo: 322

Consignor: Brandt Farms

*Sire*SYDGEN MULTI TOOL 2432
SYDGEN RESOLVE 7132
SYDGEN DIXIE ERICA 5104**ANGUSGS**
Powered by Neogen GeneSeek*Dam*S A V PEDIGREE 4834
RC PRIMROSE LADY 22
R C PRIMROSE LADY 33

CED	BW	WW	YW	CEM	MM	MWW	\$M	\$W	%RP	RETAIL ADJ
6	2.6	69.0	118	4	36	65	69	71	68.11	-1.08
\$F	\$G	\$B	\$C	\$EN	CWT	MARB	BF	REA	MARB	ADJ MARB
75	70	145	257	-23	40	0.87	0.011	1.09	5.23	-1.39

ACT BW	205 WT
ACT WT	205 RATIO
1069	
ADG	ADG RATIO
4.32	107
WDA	WDA RATIO
3.19	82
SCROTAL	PELVIC HEIGHT
33	11
PELVIC WIDTH	PELVIC PM
12.0	132
PELVIC AREA	REA ADJ
139.5	15.1
%RP	RETAIL ADJ
68.11	-1.08
MARB	ADJ MARB
5.23	-1.39

A pedigree loaded with performance, longevity and style! This bull has been a looker since day one and has done nothing but get better since. Boasting a solid EPD profile to go along with everything else, here is a bull that can do a lot of good for a lot of programs. Mother has been a solid producer for us and looks to be around for a long time. Bid and buy with confidence here!

Gelbvieh Bull

144 017L413

Birth Date: 4/12/23 Bull AMGV1575644 Tattoo: 017L413

Consignor: Trip E LLC

Sire BASIN PAYWEIGHT 0065
BASIN PAYWEIGHT 1682
21 AR O LASS 7017

Dam JRI TOP GRID 254T725
JRI MS TOPPSY 017W90
JRI MS STAR BRIGHT 017M8

CED	BW	WW	YW	CEM	MM	TM
12	-0.7	72.0	107	7	28	64
\$Cow	FPI	EPI	CWT	MARB	BF	REA
105.17	79.43	90.26	43	0.25	0.000	0.54

ACT BW	205 WT
103	821
ACT WT	205 RATIO
1126	100
ADG	ADG RATIO
4.38	109
WDA	WDA RATIO
3.73	96
SCROTAL	PELVIC HEIGHT
36	11
PELVIC WIDTH	PELVIC PM
12.0	132
PELVIC AREA	REA ADJ
147.8	15.9
%RP	RETAIL ADJ
69.77	-0.19
MARB	ADJ MARB
2.9	-3.65

Charolais Bulls

148 VJ IMPACT 3313

Birth Date: 3/20/23 Bull M987377 Tattoo: 3313

Consignor: Johnston Charolais

Sire VJ IMPACT 0421
VJ IMPACT 8801
VJ MS IMPACT

Dam LT LEDGER 0332P
VJ MS LEDGER 8201P
VJ MS IMPACT 2802P

CED	BW	WW	YW	CEM	MM	MTL	SC
11.4	-1.2	62.0	108	13	15	46	0.7
TSI				CWT	MARB	BF	REA
254.98				22	0.32	0.025	0.77

ACT BW	205 WT
95	694
ACT WT	205 RATIO
1083	107
ADG	ADG RATIO
4.01	99
WDA	WDA RATIO
3.33	86
SCROTAL	PELVIC HEIGHT
35	11
PELVIC WIDTH	PELVIC PM
11.5	126.5
PELVIC AREA	REA ADJ
136.5	13.7
%RP	RETAIL ADJ
67.57	-1.37
MARB	ADJ MARB
2.74	-3.8

150 VJ IMPACT 3315

Birth Date: 3/22/23 Bull M987380 Tattoo: 3315

Consignor: Johnston Charolais

Sire VJ IMPACT 0421
VJ IMPACT 8801
VJ MS IMPACT

Dam LT LEDGER 0332P
VJ MS LEDGER 8327P
VJ MS IMPACT 5310

CED	BW	WW	YW	CEM	MM	MTL	SC
15.3	-3.7	64.0	115	14	8	40	0.8
TSI				CWT	MARB	BF	REA
267.55				24	0.36	0.018	0.81

ACT BW	205 WT
90	658
ACT WT	205 RATIO
1093	102
ADG	ADG RATIO
4.14	103
WDA	WDA RATIO
3.38	87
SCROTAL	PELVIC HEIGHT
35	11
PELVIC WIDTH	PELVIC PM
12.0	132
PELVIC AREA	REA ADJ
142.5	15.0
%RP	RETAIL ADJ
69.28	-0.45
MARB	ADJ MARB
2.91	-3.64

Simmental Bulls

155 WS MO-HAWK II 44PYL
 Birth Date: 3/5/23 Bull 4246702 Tattoo: 44PYL
 Consignor: Wolfe Simmentals

Sire ALLEGIANCE UPGRADE
 DOUBLE R MISS 29G

Dam WS 44MPY CONSERVATIVE
 WS IRISH MOLLY 0

CED	BW	WW	YW	CEM	MM	MWW	STAY
7.7	2.9	96.9	152	2	25	74	13.1
API	TI	TM	CWT	MARB	BF	REA	
111.5	81.5		34	-0.16	-0.085	0.73	

Our top weaning weight bull out of a 24 head contemporary group is a full brother to the outstanding and now deceased WS Mo-Hawk 44PYD, on which all the semen we collected has been sold. All the DNA work has been done to sell semen on this bull. He tested homozygous black and homozygous polled. We are selling full possession and retaining 50% semen interests. His Dam has an average weaning weight ratio of 112 on 10 calves. Black blaze face.

ACT BW	205 WT
93	785
ACT WT	205 RATIO
1300	121
ADG	ADG RATIO
4.83	120
WDA	WDA RATIO
3.82	98
SCROTAL	PELVIC HEIGHT
38	12
PELVIC WIDTH	PELVIC PM
12.5	150
PELVIC AREA	REA ADJ
156.3	16.3
%RP	RETAIL ADJ
69.51	-0.33
MARB	ADJ MARB
3.31	-3.25

158 WFSF LONG HAUL L083
 Birth Date: 3/5/23 Bull 4241547 Tattoo: L083
 Consignor: Walter Family Stock Farm

Sire TJ LAST CALL 423H
 CCR COWBOY CUT 5048Z
 TJ 432

Dam WFSF MISS ABSOLUTE 8E
 KCF BENNETT ABSOLUTE
 WAL CARINA G49C

CED	BW	WW	YW	CEM	MM	MWW	STAY
13.4	-0.7	75.1	114	8	25	63	13.6
API	TI	TM	CWT	MARB	BF	REA	
136.6	82.5		36	0.45	0.003	0.58	

We love our Last Call 423H cattle! He sired last year's high-selling SimAngus bull at ICA's Tama sale. His full sibs are working for top Simmental producers all over the country. His females have great feet and udder quality and his sons are high performing and stout featured. Long Haul's full sister is working in our herd and her picture can be found in the cattle dictionary next to the term "Ideal working female." If predictable genetics is what you desire, look no further. This bull can be your utility player whether you seek replacement females, feeder calves, finishing out, or all of the above - this bull is in it for the long haul.

ACT BW	205 WT
80	701
ACT WT	205 RATIO
1157	98
ADG	ADG RATIO
3.75	93
WDA	WDA RATIO
3.4	88
SCROTAL	PELVIC HEIGHT
38	12
PELVIC WIDTH	PELVIC PM
12.5	150
PELVIC AREA	REA ADJ
156.3	14.6
%RP	RETAIL ADJ
67.50	-1.41
MARB	ADJ MARB
2.87	-3.68

156 WS 5EGL
 Birth Date: 3/11/23 Bull 4246739 Tattoo: 5EGL
 Consignor: Wolfe Simmentals

Sire HIGHLIFE HIGH ROAD
 MISS SR D1609

Dam WS 5XEG YELLOWSTONE
 WS 5UXE

CED	BW	WW	YW	CEM	MM	MWW	STAY
13.1	1.4	95.0	149	6	31	78	17.9
API	TI	TM	CWT	MARB	BF	REA	
141.4	88.8		24	0.05	-0.075	0.65	

Our #2 weaning weight bull out of a 24 head contemporary group tested homozygous black by GeneSeek. His dam has an average calving interval of 360 days and an average weaning weight ratio of 113 on three calves. Solid black.

ACT BW	205 WT
98	750
ACT WT	205 RATIO
1234	115
ADG	ADG RATIO
4.23	105
WDA	WDA RATIO
3.69	95
SCROTAL	PELVIC HEIGHT
38	12
PELVIC WIDTH	PELVIC PM
12.0	144
PELVIC AREA	REA ADJ
151.8	14.6
%RP	RETAIL ADJ
67.86	-1.21
MARB	ADJ MARB
3.42	-3.14

161 MWM MEGA WIDE 2321L
 Birth Date: 3/10/23 Bull 4243612 Tattoo: 2321L
 Consignor: Marchant Cattle Co.

Sire STAV MEGA WIDE 64G
 KINNAS MEGA WIDE 3316E
 STAV MS DOMINO 135Y

Dam MWM MRS STYLE
 SILVERAS STYLE 9303
 143

CED	BW	WW	YW	CEM	MM	MWW	STAY
11.9	0.1	74.6	121	7	23	62	15.2
API	TI	TM	CWT	MARB	BF	REA	
130.7	78.1		40	0.31	-0.020	0.56	

This half blood bull is straight from the heart of our herd. He is out of our old, blaze faced, long body, good footed Mega Wide herd bull we purchased from Stavicks out of South Dakota years ago and did a fantastic job for us. His Dam is one of our PB Angus cows we raised and has done everything we have asked of her. She is small framed, big bellied and smooth fronted just how we like our Angus cows. Year after year this cow has calves in the top end of the pen. It doesn't matter if it's replacements or bulls, she flat gets it done. 2321L will not blow you away on the number side but he is out of very good and productive cattle and will make a commercial guys dream bull in my opinion. Marchant Cattle Co. 641-275-0384 Matt Marchant

ACT BW	205 WT
89	647
ACT WT	205 RATIO
1141	100
ADG	ADG RATIO
3.97	98
WDA	WDA RATIO
3.41	88
SCROTAL	PELVIC HEIGHT
36.5	12
PELVIC WIDTH	PELVIC PM
13.0	156
PELVIC AREA	REA ADJ
163.5	14.3
%RP	RETAIL ADJ
65.84	-2.29
MARB	ADJ MARB
3.19	-3.37



STAV MEGA WIDE 64G - SIRE OF LOT 161

30 Year ANNIVERSARY



30 YEARS OF LEAVING A LEGACY

Funding Our Future

In honor of this special milestone for ICF, make a tax-deductible donation in an increment of three - \$30, \$300, \$3,000 or more.

**YOUTH BEEF TEAM | SCHOLARSHIPS
AWARDS | LEADERSHIP PROGRAMS**

Donations can be mailed:

Iowa Cattle Industry Headquarters,
c/o Iowa Cattlemen's Foundation
2055 Ironwood Court
Ames, IA 50014

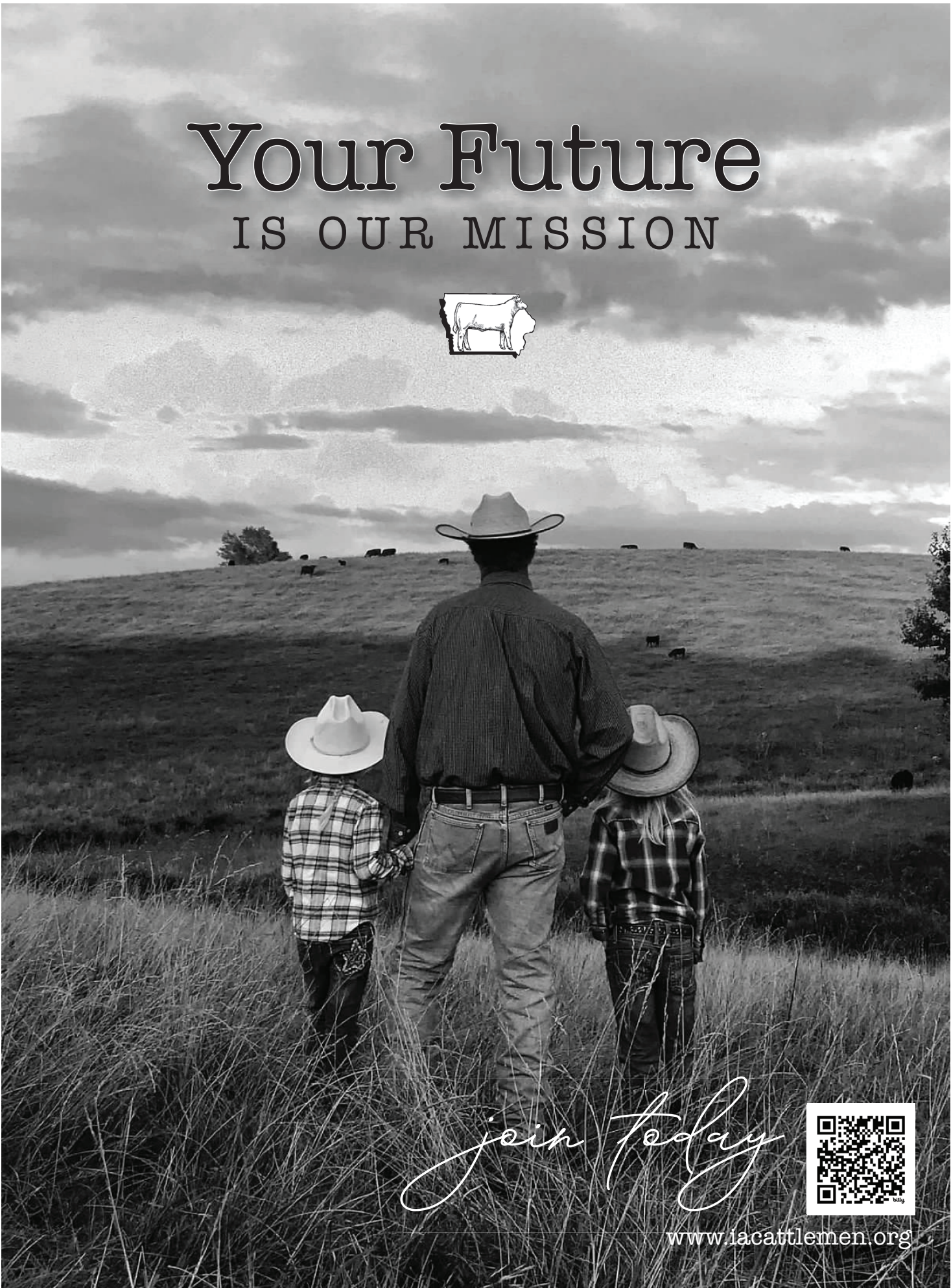
\$30

\$300

\$3k

*Supporters at the \$300 level and above will be recognized in the *Iowa Cattleman* throughout 2024. All supporters of the 30-year campaign will be listed on the ICF website through 2024.

Your Future IS OUR MISSION

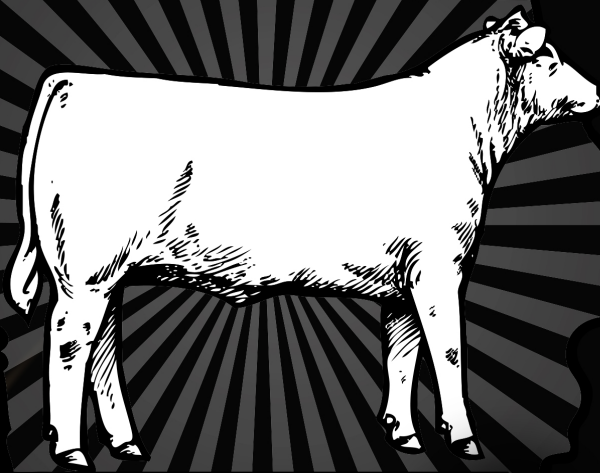


Join Today



www.iacattlemen.org

★ ★ ★ ★ ★
**IOWA CATTLEMEN'S
ASSOCIATION**



Thank You